

# TEST SERVICE FEATURES

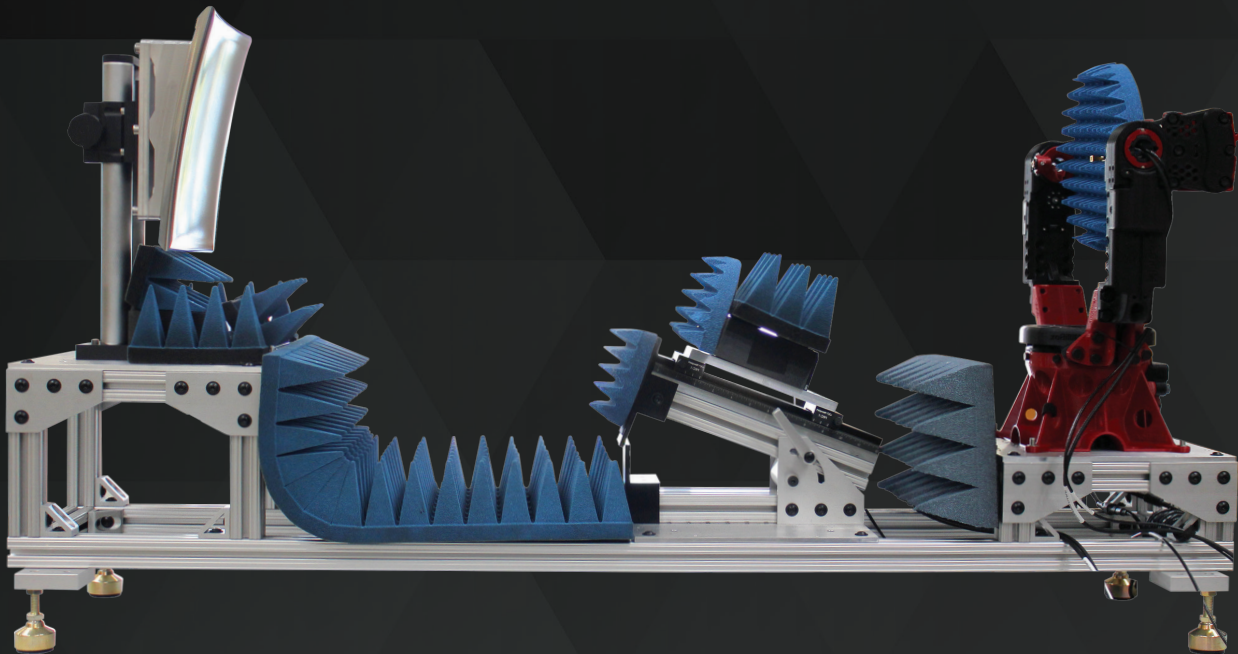
Eravant offers a range of standard antenna measurement services including gain, 2D, and 3D patterns. Frequency step size, operating bandwidth, and polarization settings can be specified by request.

State-of-the-art facilities include far-field anechoic chambers and an Eravant developed open bed compact antenna range that can cover a combined frequency range from 0.7 GHz to 330 GHz.

The open bed compact antenna range is also available for purchase as a complete, standalone test system.

Eravant is continuously investing in offering total solutions to the millimeter wave and Sub-Thz industry to further lower the barrier of entry.

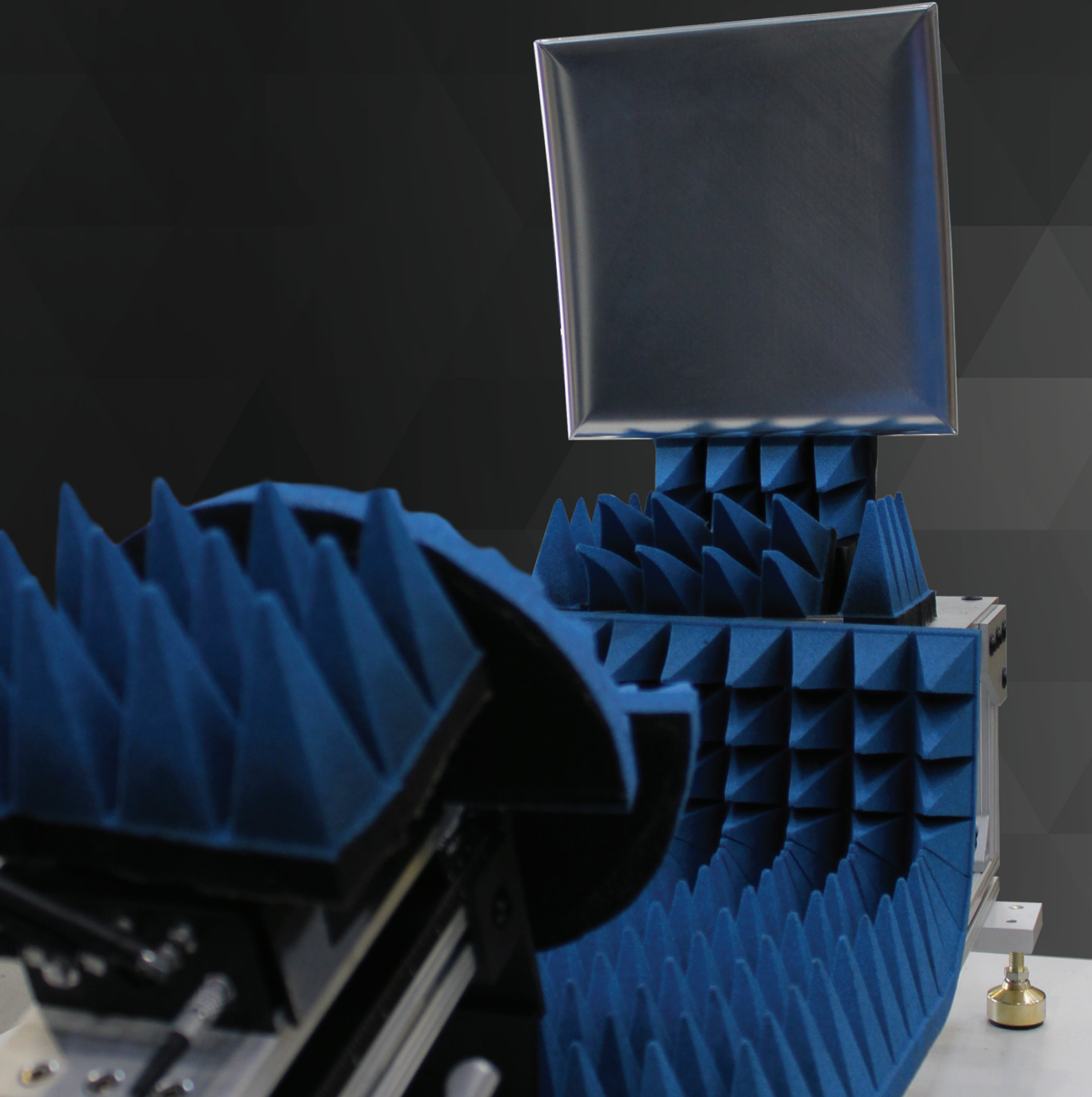
- ▶ **Gain, 2D, and 3D radiation pattern measurement**
- ▶ **Far-Field Anechoic Chamber up to 15 ft (4.5 m) far-field distance**
- ▶ **Compact Range Setups for DUT sizes up to 12 in (300 mm)**
- ▶ **Combined Frequency Range Coverage from 0.7 to 330 GHz**
- ▶ **Max DUT weight up to 6 lbs**



**ERAVANT**

For more information on Eravant's products, applications, or services, please visit: [www.eravant.com](http://www.eravant.com)  
501 Amapola Avenue, Torrance, CA 90501 | 424-757-0168 | [support@eravant.com](mailto:support@eravant.com)  
This information is subject to change without notice. Copyright © 2024 Eravant  
SDR-MMCG006 Rev 1.1

# ANTENNA MEASUREMENT SERVICES





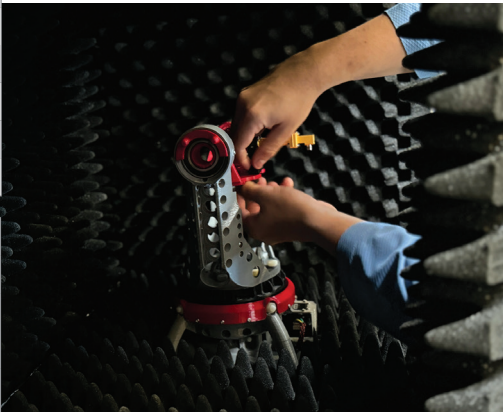
ANTENNA MEASUREMENT CAPABILITIES

ANTENNA PATTERN EXAMPLES

Benchtop Far Field Anechoic Chambers

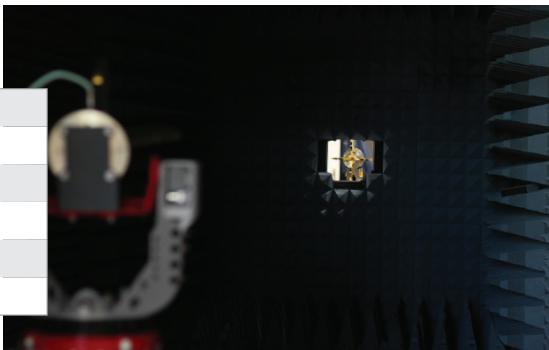
Frequency Range	0.7 to 67 GHz
Chamber Internal Dimensions	40" x 16" x 16" [1 m x 0.4 m x 0.4 m]
Far Field Distance	30" [75 cm]
Max AUT Size*	Ø 2.5" [6 cm]
Max AUT Weight*	1 lb. [0.5 kg]
Scan Range*	Up to ±180° Pattern Coverage

Frequency Range	50 to 330 GHz
Chamber Internal Dimensions	40" x 16" x 16" [1 m x 0.4 m x 0.4 m]
Far Field Distance	30" [75 cm]
Max AUT Size*	Ø 6" [15 cm]
Max AUT Weight*	6 lb. [2.7 kg]
Scan Range*	Up to ±90° Pattern Coverage



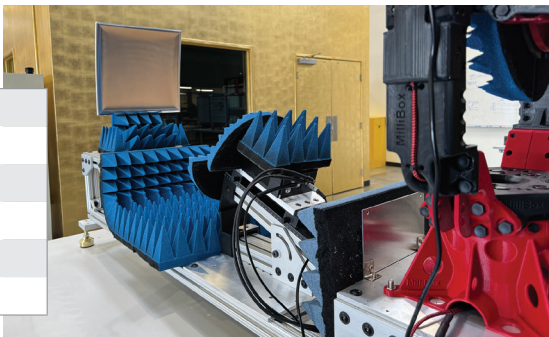
Far Field Anechoic Chamber

Frequency Range	0.7 to 67 GHz
Chamber Internal Dimensions	200" x 48" x 48" [5 m x 1.2 m x 1.2 m]
Far Field Distance	180" [4.5 m]
Max AUT Size*	Ø 6" [15 cm]
Max AUT Weight*	6 lb. [2.7 kg]
Scan Range*	Up to ±180° Pattern Coverage

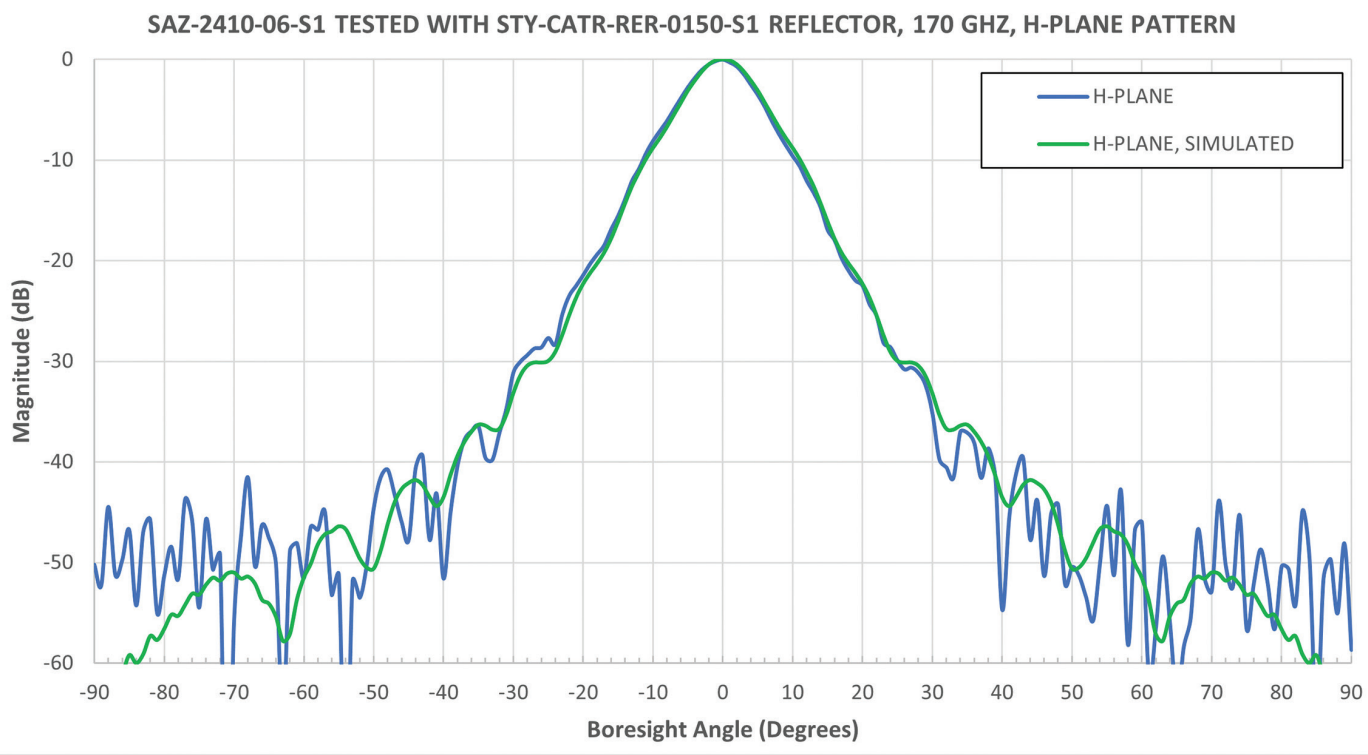


Open Bed Compact Range

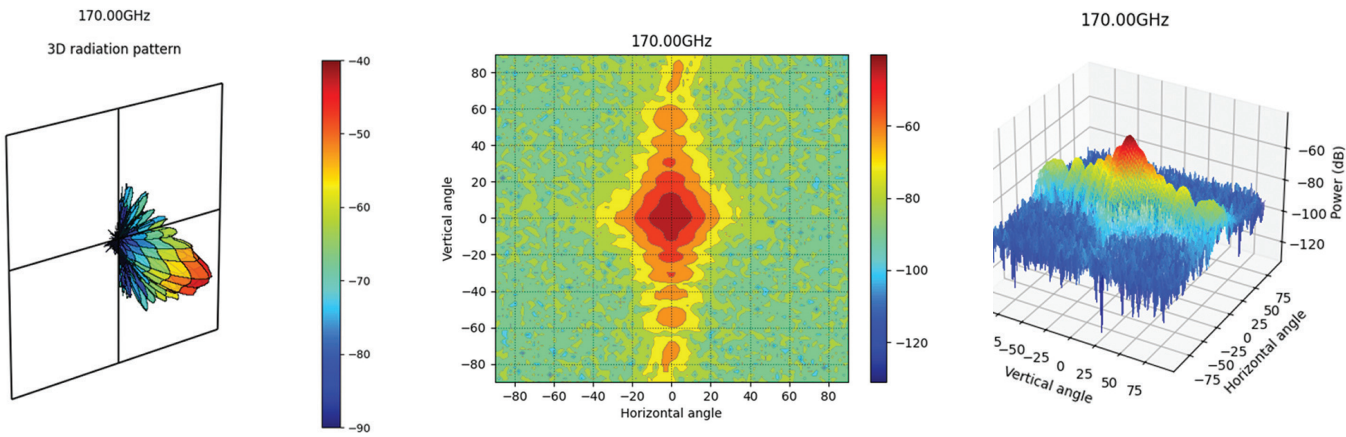
Frequency Range	50 to 170 GHz
Reflector Type	Rolled Edge Reflector
Quiet Zone Size	12" [30 cm]
Max AUT Size*	Ø 12" [30 cm]
Max AUT Weight*	6 lb. [2.7 kg]
Scan Range*	Up to ±90° Pattern Coverage



\*Max AUT size, weight, and scan range coverage depends on antenna type, design, and frequency.



1D Radiation Pattern



3D Radiation Pattern

Heat Map

Surface Plot