

# Waveguide Quick-Connect

Connect Waveguide with Ease  
from 33 GHz to 1 THz and Beyond

YONGHUI SHU

# OVERVIEW

1. How was this Product Invented?
2. What is it?
3. Benefits
4. Conclusions
5. Web Link

- **The idea was from Eravant's own Testing Experience.**
  - Using waveguide screws to make the test set and DUT connections can cause scratches and marks on DUT surface.
  - Using waveguide screws could strip the threaded holes or remove the gold-plated surface of DUT during the testing.
  - Using waveguide screws to make the test set and DUT connections is time consuming.
  - Using waveguide screws degrades the waveguide performance and shortens the equipment lifespan.
  - Improper connections between the test set and DUT by using waveguide screws, i.e., waveguide cocking can result inconsistent or bad data.
  - Tight space between the test set and DUT may make the connections between the test set and DUT difficult or impossible.

# HOW WAS THIS PRODUCT INVENTED?



# 2

## WHAT IS IT?

- Two models are offered to cover operating frequency from 33 to 1 THz or beyond.
  - SWH-QC-0750C-R2, 0.75" Diameter for UG-385/U through UG-387/U-M standard waveguide flanges covering 50 GHz to 1 THz.
  - SWH-QC-1125C-R2, 1.125" Diameter for UG-383/U and UG-383/U-M standard waveguide flanges covering 33 GHz to 60 GHz.
- We only need to use two thumb screws to make the waveguide connection easily reliable.



0.75" Diameter



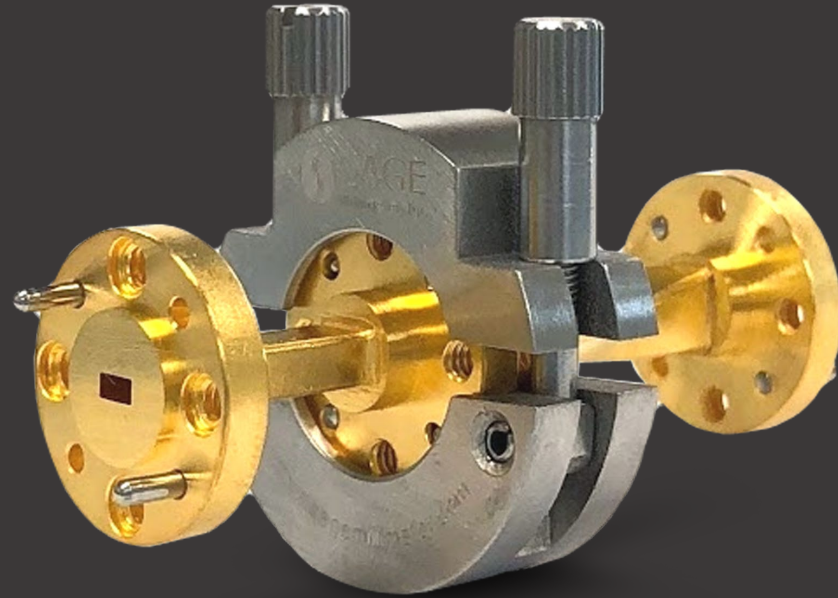
1.25" Diameter

ERAVANT

# 3 BENEFITS

## BENEFIT 1: Avoid Waveguide Screws

- The waveguide screws can scratch the DUT flanges.
- The waveguide screws can remove the gold-plated surface of threaded holes.



# 3 BENEFITS

## BENEFIT 2: Solve the Tight Space Waveguide Connection Challenges

- The tight space made the screw connection method impossible.



# 3 BENEFITS

## BENEFIT 3: Increase the Testing Speed

- Screwing and unscrewing to make waveguide connections is time consuming



# 3 BENEFITS

## BENEFIT 4: Provide More Reliable and Accurate Test Data

- Waveguide cocking is a common issue when using waveguide screws to make the connections.





# 3 BENEFITS

## BENEFIT 5: Readily Mountable on the Support

- Combined with the standard waveguide support, models SWH-QC-0750C-RS-B and SWH-QC-1125C-RS-B, the Waveguide Quick-Connects are ready to form secured waveguide test setups.



ERA<sup>®</sup>ANT

## Waveguide Quick-Connect - A Revolutionary Waveguide Connecting Technology

- Waveguide Quick-Connect can eliminate the DUT surface scratching.
- Waveguide Quick-Connect can improve the waveguide connection efficiency.
- Waveguide Quick-Connect can avoid waveguide cocking.
- Waveguide Quick-Connect can solve the tight space between test equipment and DUT.
- Waveguide Quick-Connects are readily to form secured waveguide test setups.

# CONCLUSIONS

# 4

5

WEB LINK

<https://www.eravant.com/products/test-hardware-accessories/waveguide-quick-connects>

ERA<sup>Δ</sup>ANT