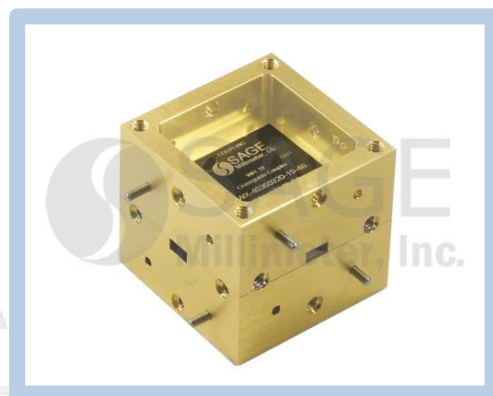


## Waveguide Crossguide Coupler, U Band, 40 dB

### Description:

**Model SWX-40348340-19-4B** is a four-port, split block crossguide coupler that is offered for power sampling where directivity is of concern. Compared to a multi-hole directional coupler, crossguide couplers offer lower insertion loss and a smaller form factor and insertion length. This model operates between 40 to 48 GHz with a 40 dB typical coupling level, 0.5 dB nominal insertion loss, and 15 dB typical directivity. The input, output, and coupled ports are all WR-19 waveguides with UG-383/U-M flanges.



### Features:

- Low Insertion Loss
- Moderate Directivity
- Four Port Configuration

### Applications:

- Test Labs
- Test Instrumentation
- Sub-assemblies

### Electrical Specifications:

Parameter	Minimum	Typical	Maximum
Frequency Range	40 GHz		48 GHz
Coupling Level		40.0 dB	
Insertion Loss		0.5 dB	
Directivity		15.0 dB	
Input/Output VSWR		1.1:1	
Specification Temperature		+25°C	
Operating Temperature	-40°C		+85°C

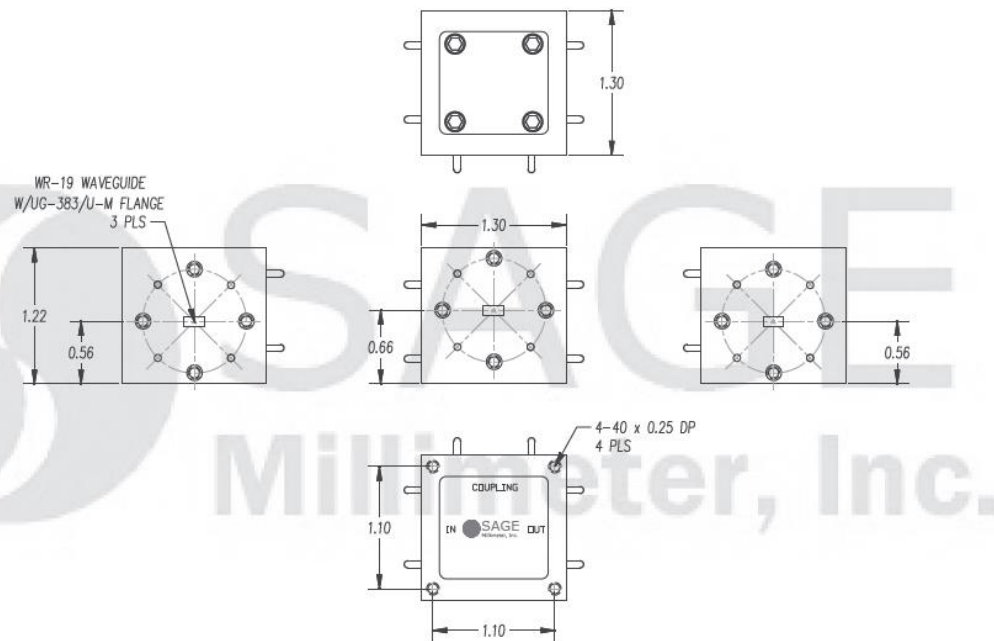
### Mechanical Specifications:

Item	Specifications
Input	WR-19 Waveguide with UG-383/U-M Flange
Output	WR-19 Waveguide with UG-383/U-M Flange
Coupled	WR-19 Waveguide with UG-383/U-M Flange
Size	1.30" (L) x 1.30" (W) x 1.22" (H)
Material	Aluminum
Finish	Gold Plated
Weight	2.0 Oz
Outline	WX-BU-4



## Waveguide Crossguide Coupler, U Band, 40 dB

**Mechanical Outline:** (Unless otherwise specified, all dimensions are in inches)



**Note:**

- All data was presented using a limited sample lot. Actual data may vary unit to unit.
- SAGE Millimeter, Inc. reserves the right to change the information presented without notice.

**Caution:**

- Any foreign objects in the waveguide will degrade performance and/or damage the device.

