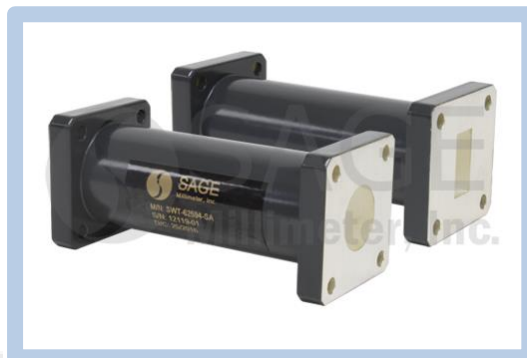


## WR-90 to Circular Waveguide Mode Transition, 1.094" Diameter

### Description:

**Model SWT-901094-SA** is a WR-90 to 1.094" diameter circular waveguide mode transition. The mode transition is manufactured by either EDM machining or electro-forming techniques to ensure high accuracy and a quality surface finish. The transition only induces a fraction of a dB insertion loss and offers a VSWR of 1.15:1 or better. The nominal operating frequency is 8.20 to 9.97 GHz. The dominate mode frequency range can be extended to cover 8.2 to 12.4 GHz if higher order waveguide mode is not excited.



### Features:

- Rugged Waveguide Configuration
- Low Insertion Loss
- Instrumentation Grade

### Applications:

- Test Labs
- Test Instrumentation
- Sub-assemblies

### Mechanical Specifications:

Parameter	Connector
Waveguide Size - Rectangular	WR-90 Waveguide with UG-39/U Flange
Waveguide Size - Circular	Ø 1.094" Circular Waveguide with UG-39/U Flange
Insertion Length	3.50"
Outline	WT-XC-1094
Material	Aluminum
Finishing	Silver Plated (Inner) and Black Paint (Outer)
Weight	4.2 Oz

### Mechanical Outline: (Unless otherwise specified, all dimensions are in inches)



### Note:

- SAGE Millimeter, Inc. reserves the right to change the information presented without notice.



www.sagemillimeter.com | 3043 Kashiwa Street, Torrance, CA 90505  
Phone: 424-757-0168 | Fax: 424-757-0188 | Email: sales@sagemillimeter.com