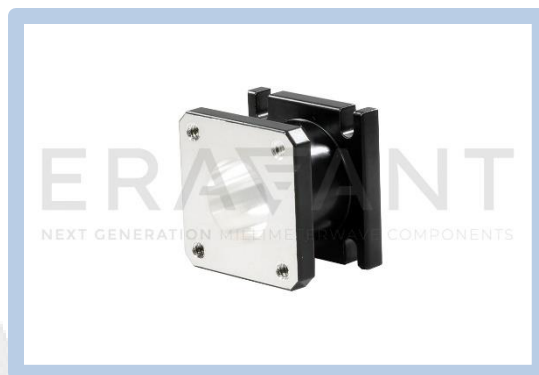


## 0.622" Square to 0.584" Circular Waveguide Mode Transition, Compact

### Description:

**Model SWT-622584-SA-C-QC** is a compact 0.622" square waveguide to 0.584" circular waveguide mode transition. The mode transition is manufactured by either EDM machining or electro-forming techniques to ensure high accuracy and a quality surface finish. The transition only induces nominal insertion loss and offers a return loss of 25 dB or better. The nominal operating frequency is 13.4 to 18 GHz.



### Features:

- Rugged Waveguide Configuration
- Low Insertion Loss
- Instrumentation Grade

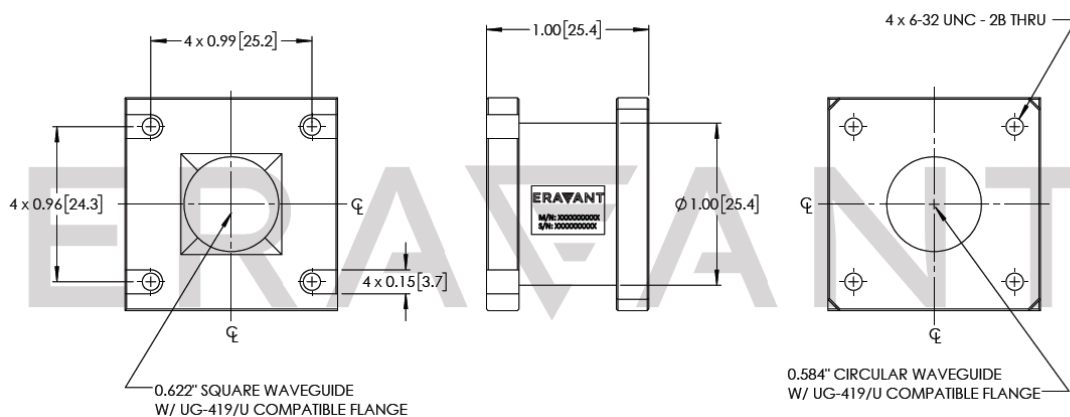
### Applications:

- Test Labs
- Test Instrumentation
- Sub-assemblies

### Mechanical Specifications:

Parameter	Connector
Waveguide	0.622" Square Waveguide with UG-419/U Compatible Flange
Waveguide	0.584" Circular Waveguide with UG-419/U Compatible Flange
Material	Aluminum
Finish	Silver Plated (Inner) and Paint (Outer)
Weight	3.5 Oz
Insertion Length	1"
Outline	WT-6SC-622-584-C

**Mechanical Outline:** (Unless otherwise specified, all dimensions are in inches [millimeters])





## 0.622" Square to 0.584" Circular Waveguide Mode Transition, Compact

### Note:

- Eravant reserves the right to change the information presented without notice.
- Other mechanical configurations are available under different model numbers.

### Caution:

- Foreign objects in the waveguide will affect the polarizer performance and may damage the polarizer.

