

Ka-Band Waveguide 4-Way Power Divider, 28.5 to 31.5 GHz

Description:

Model SWP-29332304-28-E2-H is a Ka band, 4-way power divider with a typical insertion loss of 0.6 dB across the frequency range of 28.5 to 31.5 GHz. The divider offers 20 dB isolation and well balanced ports, which can be used for in-phase power dividing or combining. The power divider features a 90° twist between the input and output with WR-28 waveguides and UG-599/U flanges at the input and all outputs for convenient subassembly configurations.



Features:

- Low Insertion Loss
- Excellent Port Balance
- High Isolation
- 90° Twist between Input and Output Port

Applications:

- Test Labs
- Instrumentation
- Sub-assemblies

Electrical Specifications:

Parameter	Minimum	Typical	Maximum
Frequency	28.5 GHz		31.5 GHz
Insertion Loss		0.6 dB	
Power Unbalance:		±0.2 dB	
Port Isolation		20 dB	
Input/ Output Return Loss			15 dB
Specification Temperature		+25 °C	
Operating Temperature	-40 °C		+85 °C

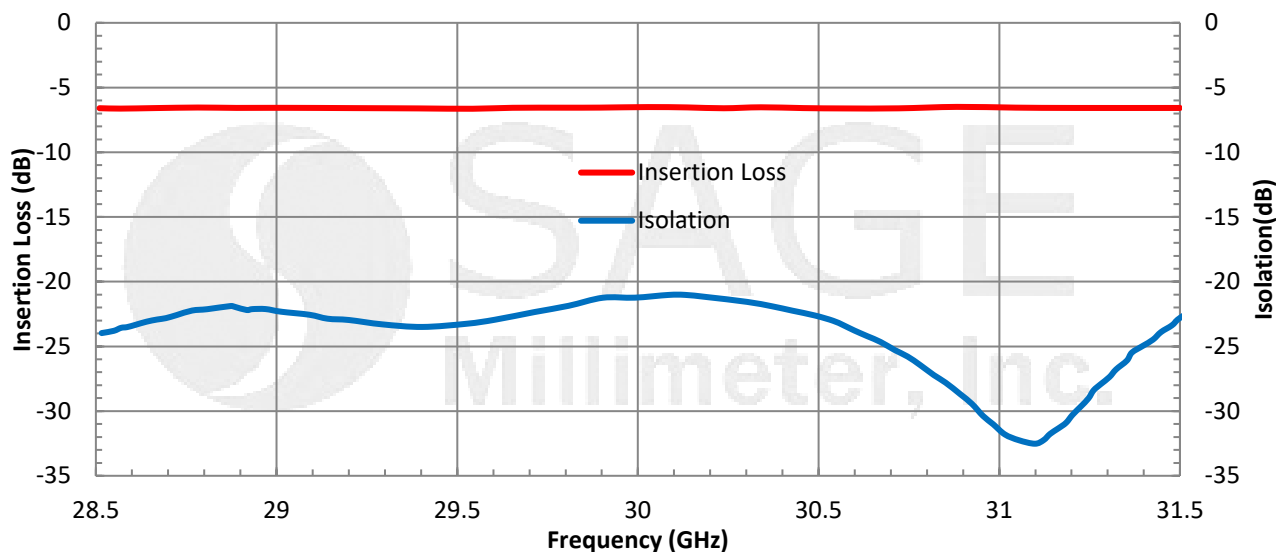
Mechanical Specifications:

Item	Specification
Input Port	WR-28 Waveguide with UG-599/U Flange
Output Ports	WR-28 Waveguide with UG-599/U Flange
Material	Aluminum
Finish	Gold Plated
Weight	9.2 Oz
Size	2.00" (L) X 7.84" (W) X 0.88" (H)
Outline	WP-A4I-T2

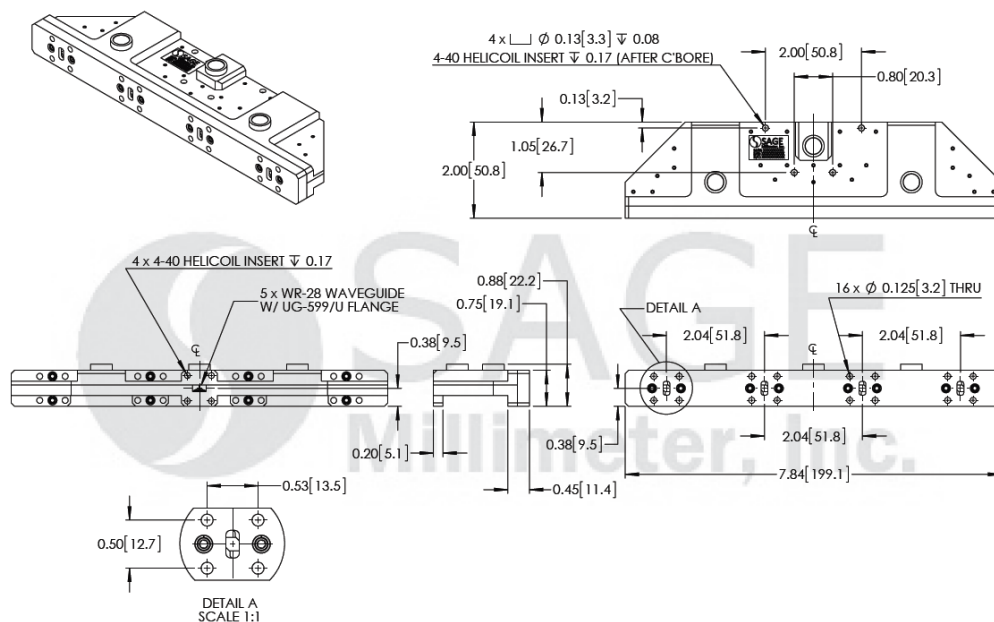


Ka-Band Waveguide 4-Way Power Divider, 28.5 to 31.5 GHz

Typical Insertion Loss and Isolation vs. Frequency



Mechanical Outline: (Unless otherwise specified, all dimensions are in inches [millimeters])

**Note:**

- All data presented is collected from a sample lot. Actual data may vary unit to unit slightly.
- All testing was performed under +25 °C case temperature.
- SAGE Millimeter, Inc. reserves the right to change the information presented without notice.

Caution:

- Any foreign objects in the waveguide will degrade performance and/or damage the device.



www.sagemillimeter.com | 3043 Kashiwa Street, Torrance, CA 90505
Phone: 424-757-0168 | Fax: 424-757-0188 | Email: sales@sagemillimeter.com