

WR-42 Waveguide Power Divider, 4-Way, Inline, 18 to 26.5 GHz

Description:

Model SWP-18327304-42-E1 is a WR-42, 4-way power divider that operates from 18 to 26.5 GHz. The power divider offers a typical insertion loss of 0.5 dB and typical isolation of 20 dB. All ports are well-balanced and in-phase for power dividing or combining applications across the band. The power divider is configured as an inline package with WR-42 waveguides and UG-595/U compatible flanges at all ports. A right angle, 4-way configuration is offered under model **SWP-18327304-42-S1**.



Features:

- Full Band Performance
- Low Insertion Loss
- High Isolation
- Compact Package

Applications:

- Test Labs
- Test Instrumentation
- Sub-assemblies

Electrical Specifications:

Parameter	Minimum	Typical	Maximum
Frequency	18 GHz		26.5 GHz
Insertion Loss		0.5 dB	
Power Unbalance		±0.4 dB	
Adjacent Port Isolation		20 dB	
Non-Adjacent Port Isolation		30 dB	
Return Loss		15 dB	
Specification Temperature		+25 °C	
Operating Temperature	-40 °C		+85 °C

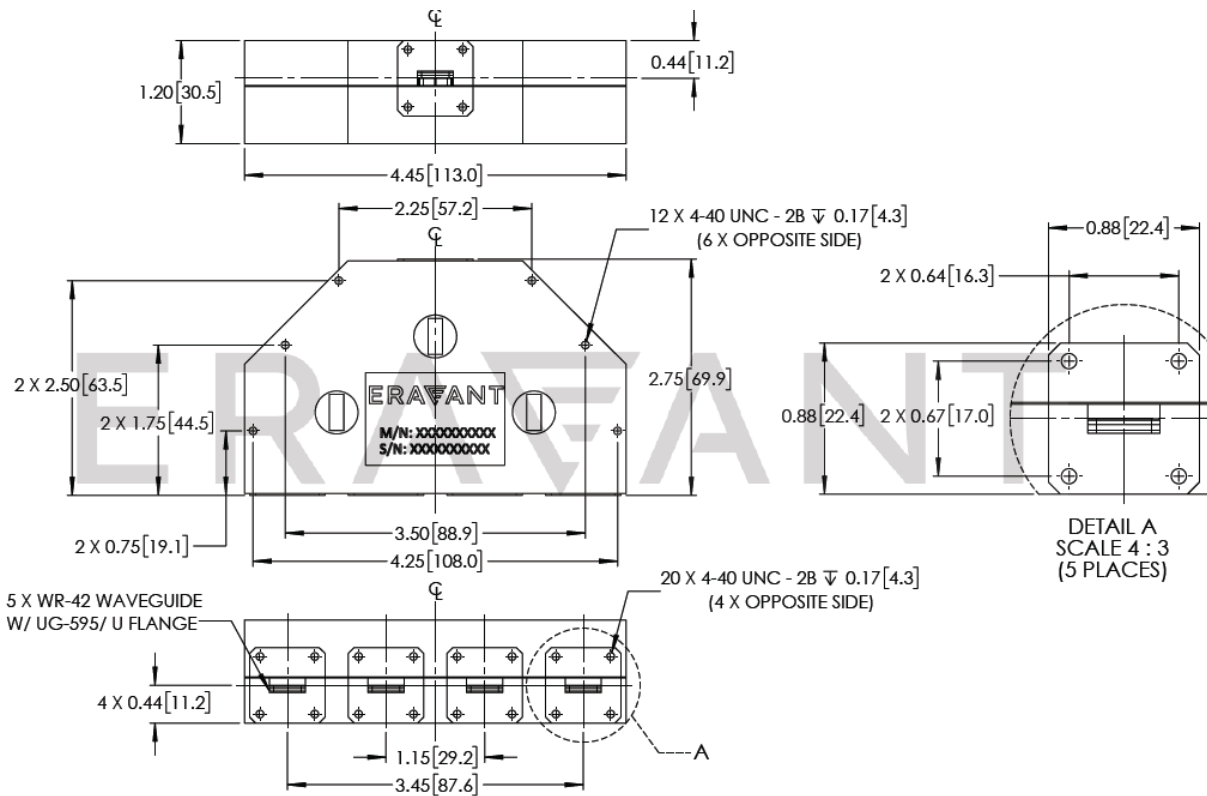
Mechanical Specifications:

Item	Specification
RF Ports	WR-42 Waveguide with UG-595/U Compatible Flange
Material	Aluminum
Finish	Gold Plated
Outline	WP-K4I



WR-42 Waveguide Power Divider, 4-Way, Inline, 18 to 26.5 GHz

Mechanical Outline: (Unless otherwise specified, all dimensions are in inches [millimeters])

**Note:**

- Eravant reserves the right to change the information presented without notice.

Caution:

- Exceeding absolute maximum ratings shown will damage the device.
- Any foreign objects in the waveguide will degrade performance and/or damage the device.

