

SWJ-22-M1

Manual Waveguide Switch, Q-Band, E-Plane

SWJ-22-M1 is a Q-band manual waveguide switch that covers the frequency range of 33 to 50 GHz. The switch is a E-plane type, bi-directional, multi-path device with a 3-channel rotor which allows for switching between four distinct positions. The typical insertion loss and isolation are 0.4 dB and 60 dB, respectively. The RF ports are WR-22 waveguides with UG-383/U anti-cocking flanges.



Electrical Specifications:

| Parameter | Minimum | Typical | Maximum |
|---------------------------|---------|---------|---------|
| Frequency Range | 33 GHz | | 50 GHz |
| Insertion Loss | | 0.4 dB | |
| Isolation | | 60 dB | |
| Return Loss | | 23 dB | |
| Specification Temperature | | +25°C | |
| Operating Temperature | -25°C | | +65°C |

Mechanical Specifications:

| Item | Specification |
|------------------|---|
| RF Ports | WR-22 Waveguide with UG-383/U Anti-Cocking Flange |
| Port Orientation | E-Plane |
| Body Material | Brass |
| Body Finish | Gold Plated |
| Weight | 2.0 lbs. |
| Outline | WJ-MQ-A |

ECCN

EAR99

FEATURES

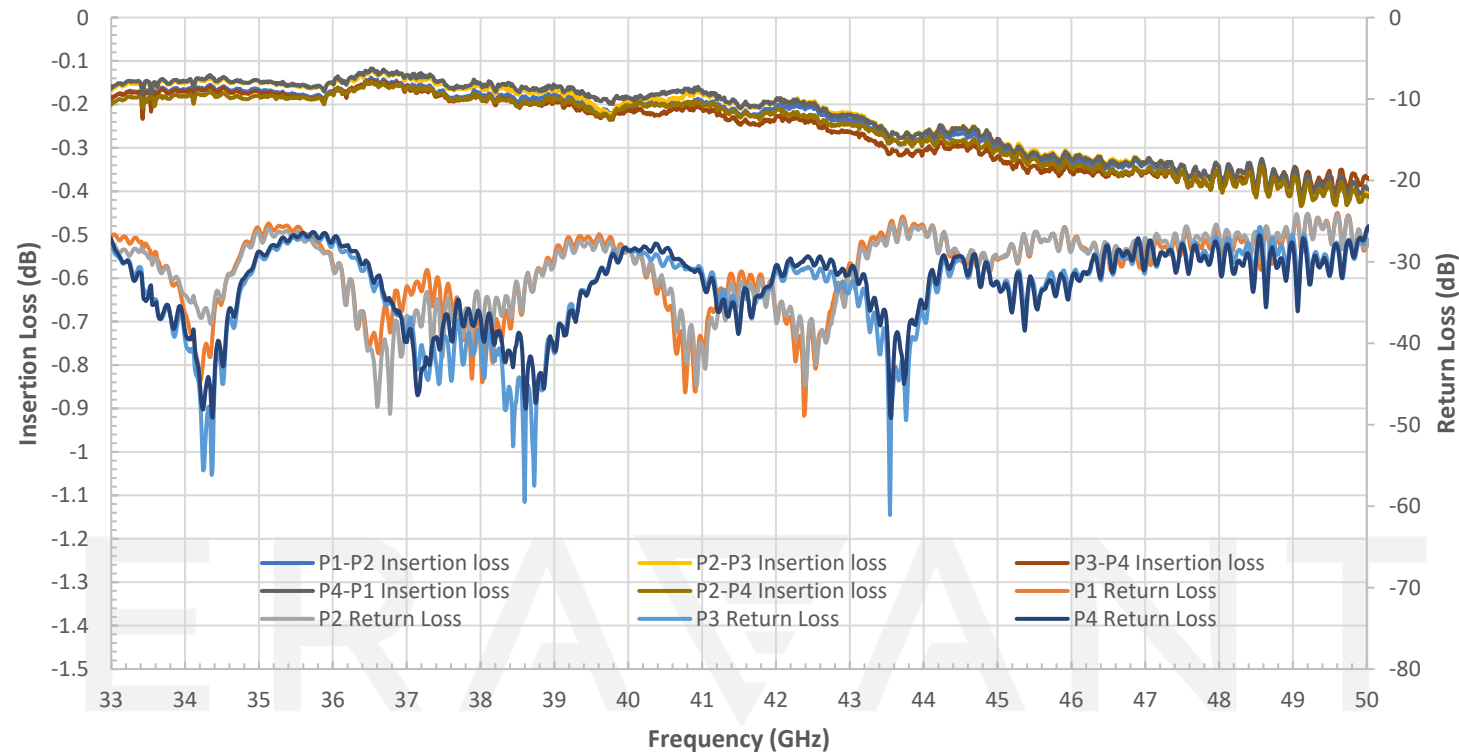
- Low Insertion Loss
- High Isolation
- Clockwise or Anti-clockwise Rotation
- 3-Channel Rotor

APPLICATIONS

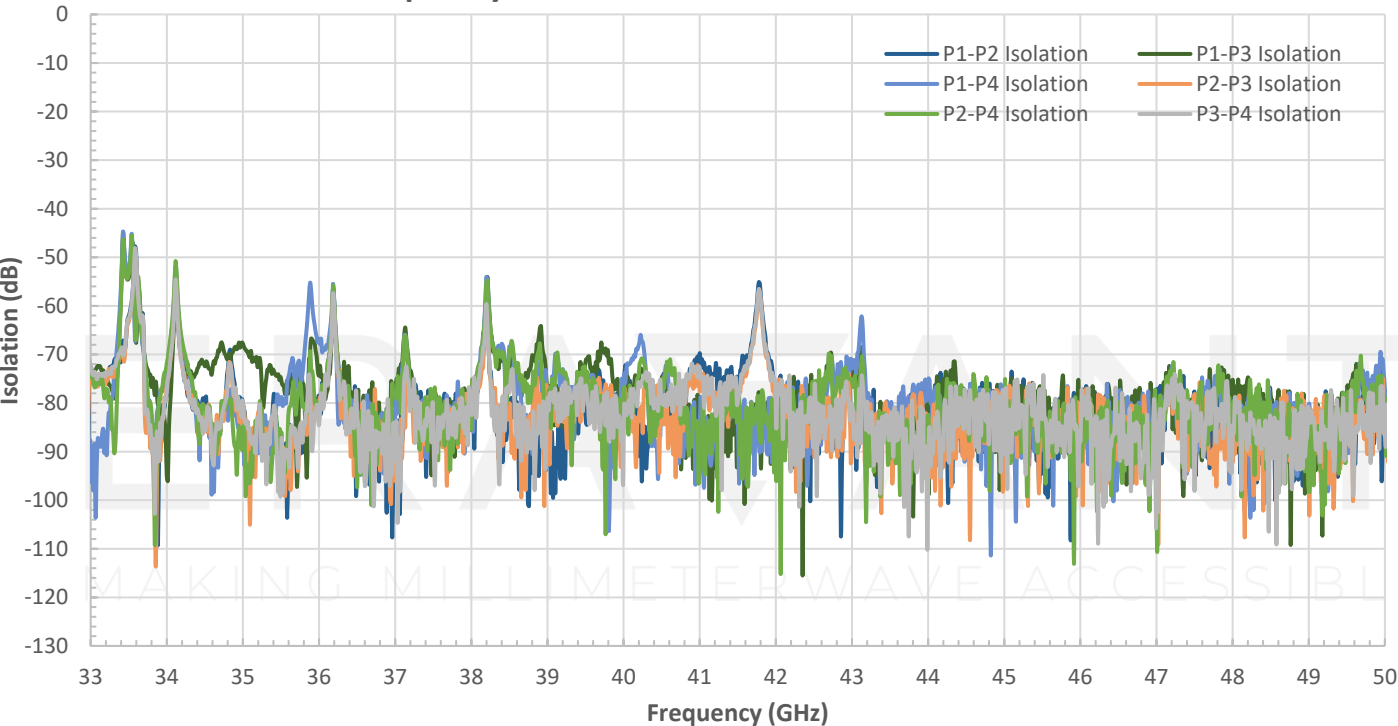
- Test Lab
- Communication Systems
- Radar Systems

SUPPLEMENTAL DETAILS

Measured Insertion Loss and Return Loss vs Frequency

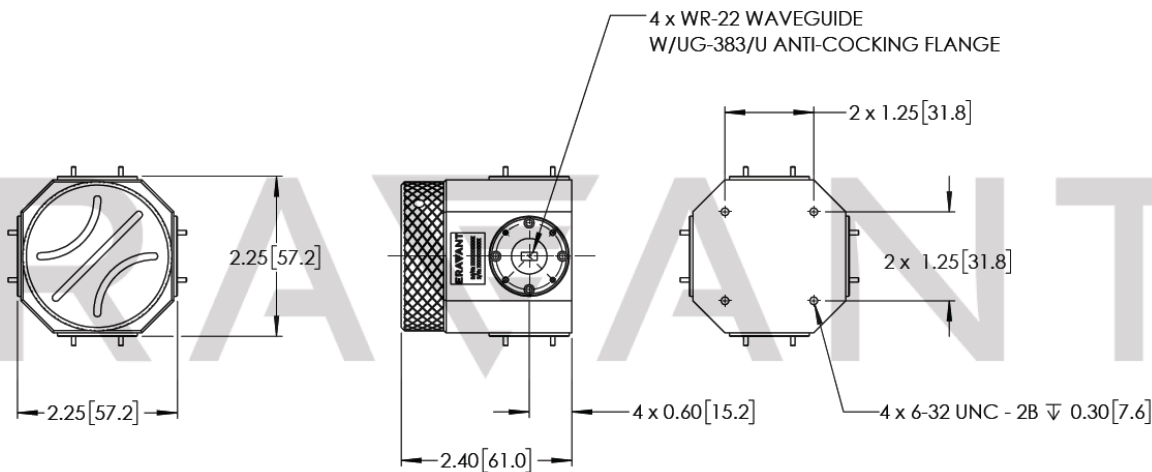


Measured Isolation vs Frequency



SWJ-22-M1

Mechanical Outline: (Unless otherwise specified, all dimensions are in inches [millimeters])



NOTE:

- On condition that test data is provided it is collected from a sample lot. Actual data may vary slightly from unit to unit. All testing is performed under +25 °C room temperature.
- Eravant reserves the right to change the information presented without notice.

CAUTION:

- Any foreign objects in the waveguide will cause performance degradation and may damage or destroy the unit.