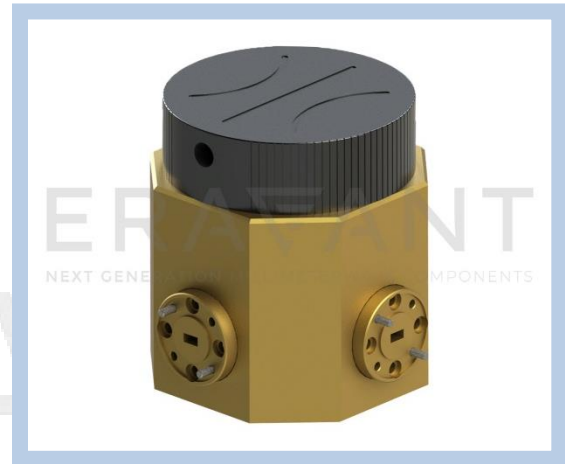


## Manual Waveguide Switch, E-Band, H-Plane

### Description:

**Model SWJ-12-M1-H** is a E-band manual waveguide switch that covers the frequency range of 60 to 90 GHz. The switch is a H-plane type, bi-directional, multi-path device with a 3-channel rotor which allows for switching between four distinct positions. The typical insertion loss and isolation are 0.6 dB and 50 dB, respectively. The RF ports are WR-12 waveguides with UG-387/U anti-cocking flanges. The E-plane version of the switch is offered under model **SWJ-12-M1**.



### Features:

- Low Insertion Loss
- High Isolation
- Clockwise or Anti-clockwise Rotation
- 3-Channel Rotor

### Applications:

- Test Set
- Communication Systems
- Radar Systems

### Electrical Specifications:

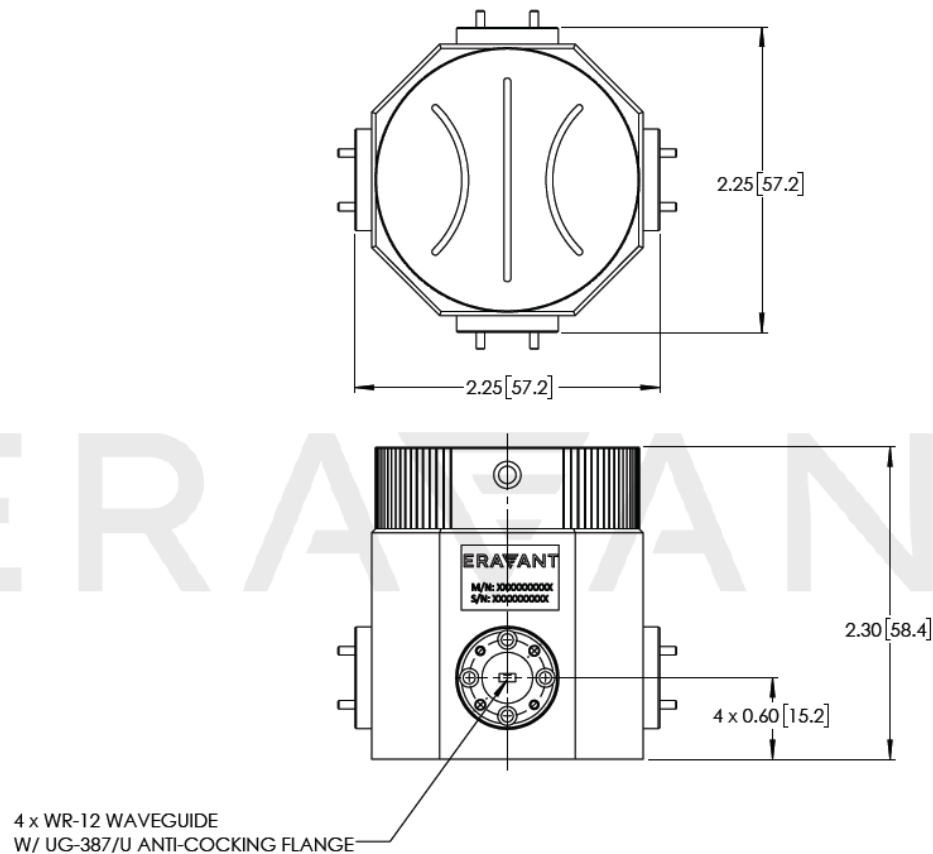
Parameter	Minimum	Typical	Maximum
Frequency	60 GHz		90 GHz
Insertion Loss		0.6 dB	
Isolation		50 dB	
Return Loss		23 dB	
Specification Temperature		+25 °C	
Operating Temperature	-40 °C		+85 °C

### Mechanical Specifications:

Item	Specification
RF Ports	WR-12 Waveguide with UG-387/U Anti-Cocking Flange
Port Orientation	H-Plane
Material	Brass
Finish	Gold Plated
Outline	WJ-ME-A-H

## Manual Waveguide Switch, E-Band, H-Plane

**Mechanical Outline:** (Unless otherwise specified, all dimensions are in inches [millimeters])



**Note:**

- Datasheet photo is a render and may not be representative of the final product.
- All electrical and mechanical specs are preliminary and may differ from the final design.
- Eravant reserves the right to change the information presented without notice.

**Caution:**

- Any foreign objects in the waveguide will cause performance degradation and possible device damage.