

## SWJ-08-M1

## Manual Waveguide Switch, F-Band, E-Plane

**SWJ-08-M1** is a F-band manual waveguide switch that covers the frequency range of 90 to 140 GHz. The switch is a E-plane type, bi-directional, multi-path device with a 3-channel rotor which allows for switching between four distinct positions. The typical insertion loss and isolation are 1.6 dB and 50 dB, respectively. The RF ports are WR-08 waveguides with UG-387/U-M anti-cocking flanges.



## Electrical Specifications:

Parameter	Minimum	Typical	Maximum
Frequency Range	90 GHz		140 GHz
Insertion Loss		1.6 dB	
Isolation		50 dB	
Return Loss		20 dB	
Specification Temperature		+25°C	
Operating Temperature	-25°C		+65°C

## Mechanical Specifications:

Item	Specification
RF Ports	WR-08 Waveguide with UG-387/U-M Anti-Cocking Flange
Port Orientation	E-Plane
Body Material	Brass
Body Finish	Gold Plated
Weight	2.0 lbs.
Outline	WJ-MF-A

## ECCN

EAR99

## FEATURES

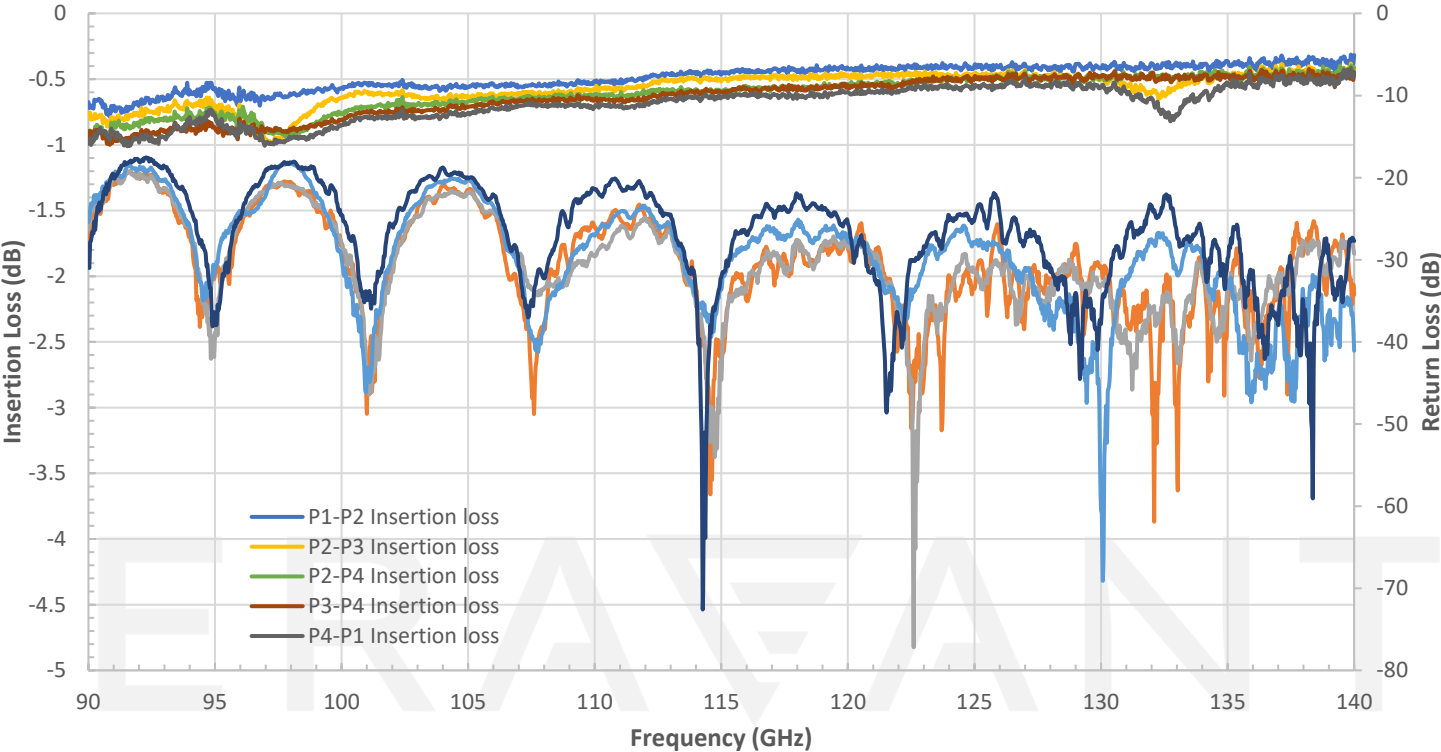
- Low Insertion Loss
- High Isolation
- Clockwise or Anti-clockwise Rotation
- 3-Channel Rotor

## APPLICATIONS

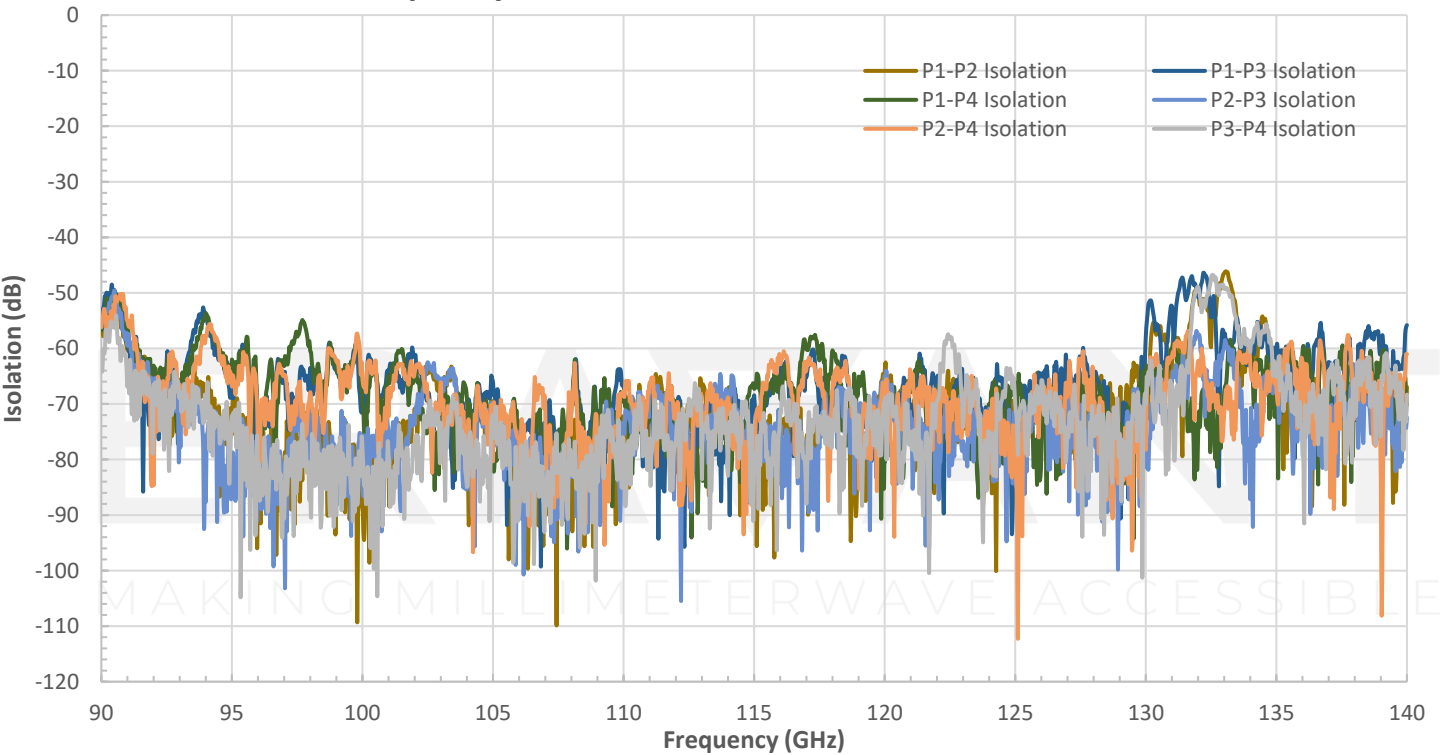
- Test Lab
- Communication Systems
- Radar Systems

## SUPPLEMENTAL DETAILS

Measured Insertion Loss and Return Loss vs Frequency

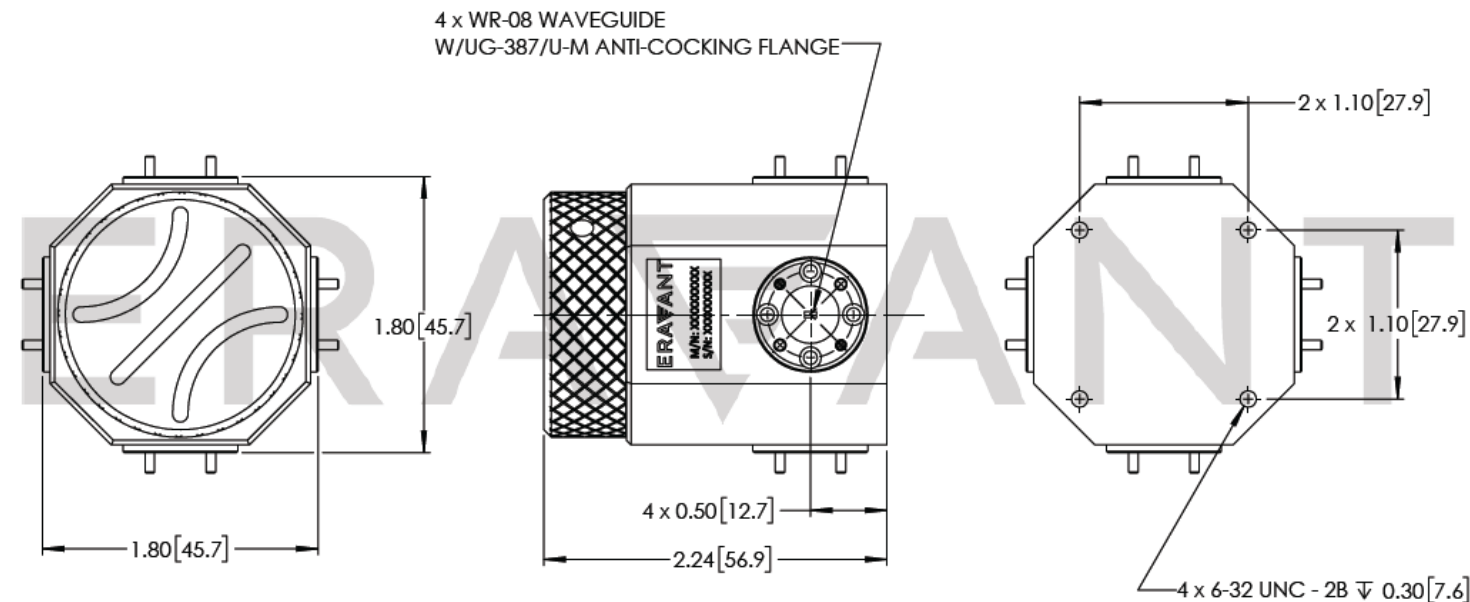


Measured Isolation vs Frequency



## SWJ-08-M1

**Mechanical Outline:** (Unless otherwise specified, all dimensions are in inches [millimeters])



**NOTE:**

- On condition that test data is provided it is collected from a sample lot. Actual data may vary slightly from unit to unit. All testing is performed under +25 °C room temperature.
- Eravant reserves the right to change the information presented without notice.

**CAUTION:**

- Any foreign objects in the waveguide will cause performance degradation and may damage or destroy the unit.

ERAVANT

MAKING MILLIMETERWAVE ACCESSIBLE