



## Waveguide Bandpass Filter, W Band, 93 to 95 GHz

### Description:

**Model SWF-94302330-10-B1** is a W band waveguide bandpass filter with a passband frequency of 93 to 95 GHz and rejection frequencies from DC to 91 GHz and 97 to 110 GHz. The nominal insertion loss of the bandpass filter is 2.5 dB and the typical rejection is 30 dB. Since both low end and high end cut off frequencies can be selected by modifying the design, custom designs are available under different model numbers.



### Features:

- Low Cost
- Low Insertion Loss
- High Rejection

### Applications:

- Communication Systems
- Radar Systems
- Sub-assemblies

### Electrical Specifications:

Parameter	Minimum	Typical	Maximum
Passband Frequency	93 GHz		95 GHz
Passband Insertion Loss		2.5 dB	
Passband Ripple		±0.5 dB	
Rejection Frequency, Low Side	DC		91 GHz
Rejection Frequency, High Side	97 GHz		110 GHz
Rejection		30 dB	
Passband Return Loss		14 dB	
Specification Temperature		+25 °C	
Operating Temperature	-40 °C		+85 °C

### Mechanical Specifications:

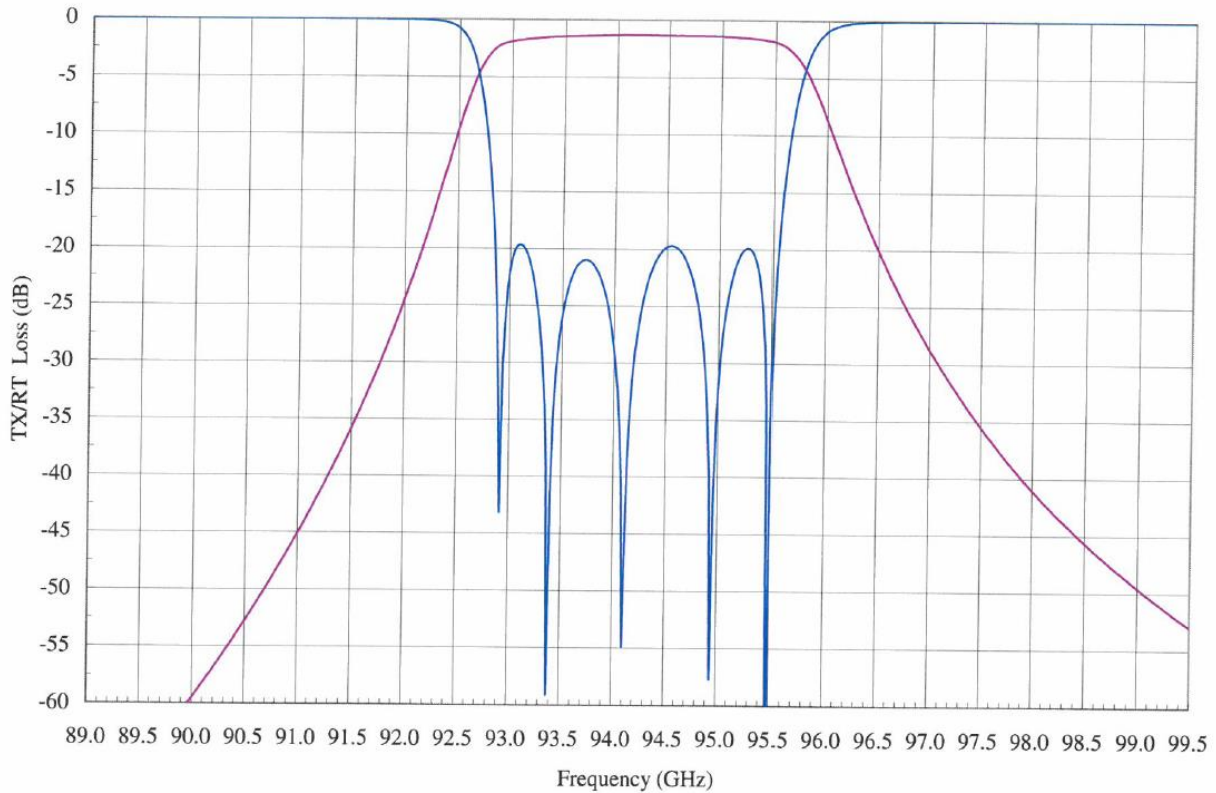
Item	Specification
Waveguide	WR-10 Waveguide with UG-387/U-M Flange
Material	Aluminum
Finish	Gold Plated
Weight	0.4 Oz
Size	1.20" (L) X 0.75" (Ø)
Outline	WF-BW



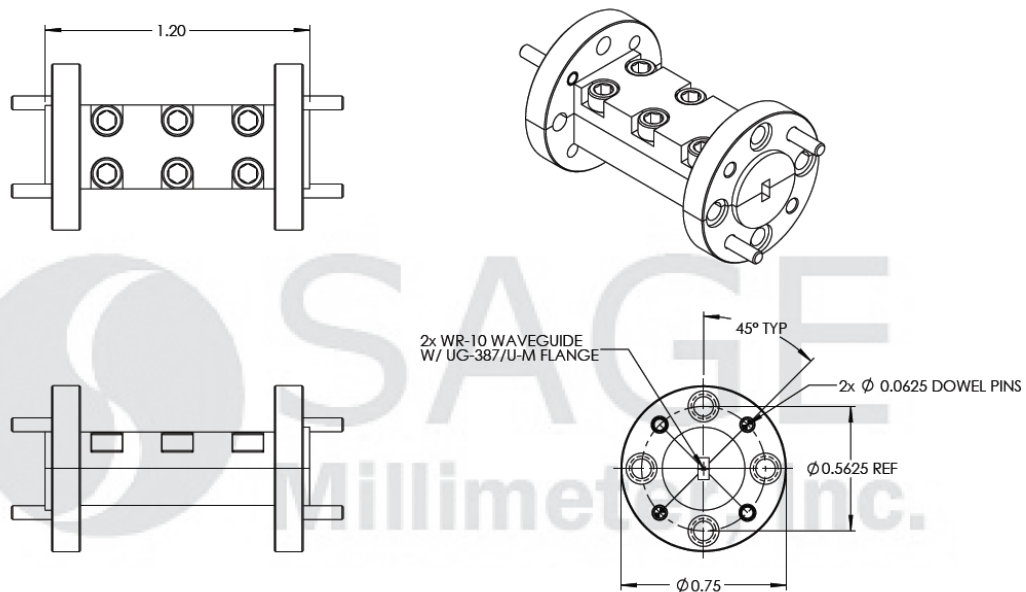


## Waveguide Bandpass Filter, W Band, 93 to 95 GHz

### Simulated Data



### Mechanical Outline: (Unless otherwise specified, all dimensions are in inches [millimeters])



## Waveguide Bandpass Filter, W Band, 93 to 95 GHz

**Note:**

- All data presented is simulated. Actual data may vary, slightly.
- SAGE Millimeter, Inc. reserves the right to change the information presented without notice.

**Caution:**

- Any foreign objects in the waveguide will cause performance degradation and possible device damage.

