

Waveguide Bandpass Filter, W Band, 89 to 91 GHz

Description:

Model SWF-90302340-10-B1 is a W band waveguide bandpass filter with a passband frequency of 89 to 91 GHz and rejection frequencies from DC to 85.5 GHz and 93.5 to 110 GHz. The nominal insertion loss of the bandpass filter is 2.0 dB and offers 40 dB typical rejection. Since passband frequency can be selected by modifying the design, custom designs are available under different model numbers.



Features:

- Broad Band
- Low Insertion Loss
- High Rejection

Applications:

- IEEE 802.11ad WiGig Systems
- Test Labs
- Instrumentation
- Sub-assemblies

Electrical Specifications:

Parameter	Minimum	Typical	Maximum
Passband Frequency	89 GHz		91 GHz
Passband Insertion Loss		2.0 dB	
Passband Ripple		±0.25 dB	
Rejection Frequency, Low Side	DC		85.5 GHz
Rejection Frequency, High Side	93.5 GHz		110 GHz
Rejection		40 dB	
Passband Return Loss		14 dB	
Specification Temperature		+25 °C	
Operating Temperature	-40 °C		+85 °C

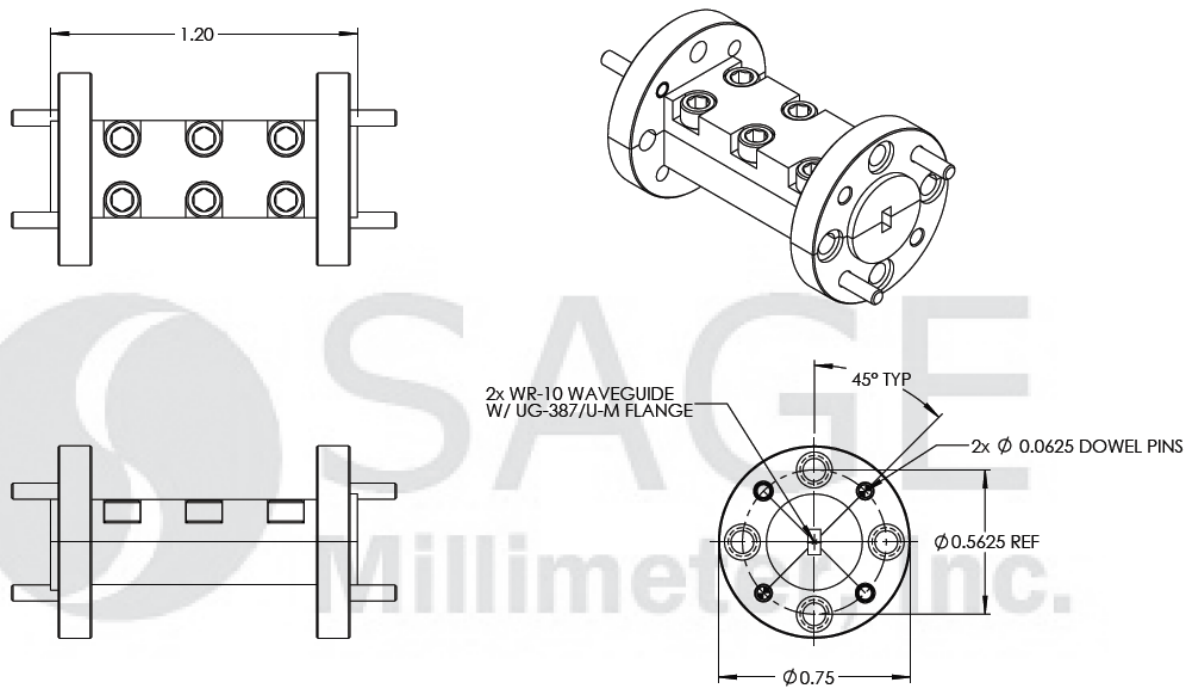
Mechanical Specifications:

Item	Specification
Waveguide	WR-10 Waveguide with UG-387/U-M Flange
Material	Aluminum
Finish	Gold Plated
Weight	0.4 Oz
Size	1.20" (L) X 0.75" (Ø)
Outline	WF-BW



Waveguide Bandpass Filter, W Band, 89 to 91 GHz

Mechanical Outline: (Unless otherwise specified, all dimensions are in inches [millimeters])

**Note:**

- Eravant reserves the right to change the information presented without notice.

Caution:

- Any foreign objects in the antenna will cause performance degradation and possible device damage.

