

SWF-17418450-06-L1

Waveguide Lowpass Filter, D Band, 110 to 170 GHz, 180 to 220 GHz Rejection

SWF-17418450-06-L1 is a D band waveguide lowpass filter with a passband frequency from 110 to 170 GHz and a rejection frequency from 180 to 220 GHz. The nominal insertion loss of the filter is 4.0 dB and the typical rejection is 50 dB. Since the high-end cutoff frequency can be changed by modifying the design, custom designs can be offered under different model numbers.



Electrical Specifications:

Parameter	Minimum	Typical	Maximum
Passband Frequency	110 GHz		170 GHz
Passband Insertion Loss		4.0 dB	
Passband Return Loss		13 dB	
Rejection Frequency, Low Side	DC		90 GHz
Rejection Frequency, High Side	180 GHz		220 GHz
Rejection		50 dB	
Specification Temperature		+25 °C	
Operating Temperature	-40 °C		+85 °C

Mechanical Specifications:

Item	Specification
Waveguide Port	WR-06
Flange	UG-387/U-M Anti-Cocking
Material	Brass
Finish	Gold Plated
Weight	2.5 oz.
Outline	WF-LD-A

ECCN

EAR99

FEATURES

- Low Insertion Loss
- High Rejection

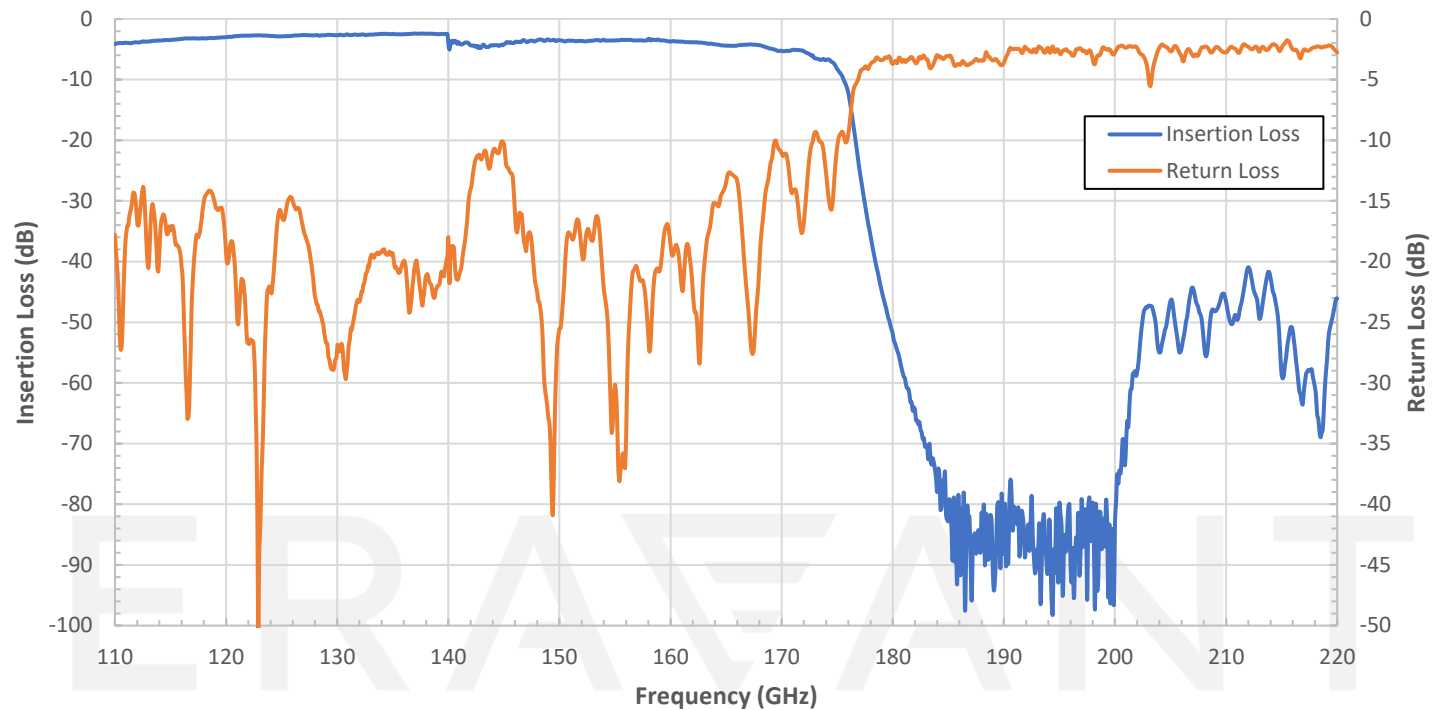
APPLICATIONS

- Communication Systems
- Radar Systems
- Sub-assemblies

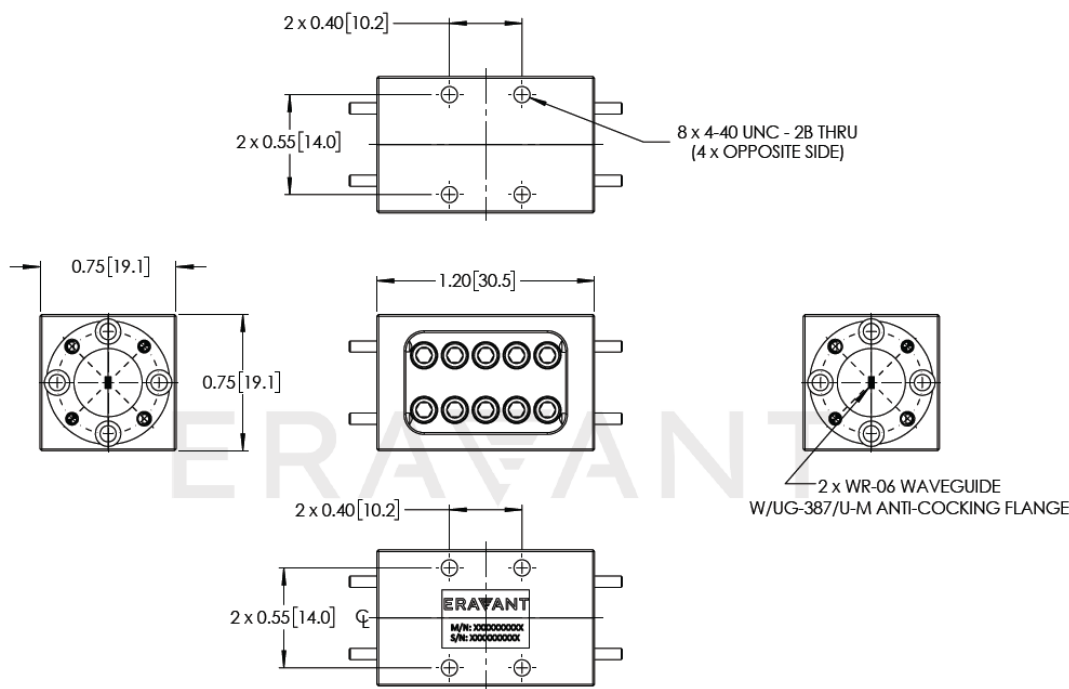
SUPPLEMENTAL DETAILS



Typical Measured Performance vs Frequency



Mechanical Outline: (Unless otherwise specified, all dimensions are in inches [millimeters])



NOTE:

- All data presented is collected from a sample lot. Actual data may vary unit to unit, slightly.
- All testing was performed under +25 °C case temperature
- Eravant reserves the right to change the information presented without notice.

CAUTION:

- Any foreign objects in the waveguide will cause performance degradation and may damage or destroy the unit.

ERAVANT
MAKING MILLIMETERWAVE ACCESSIBLE

ERAVANT
MAKING MILLIMETERWAVE ACCESSIBLE