

**E-Band Waveguide to 1.0 mm Connector Adapter, Right Angle, 81 to 86 GHz****Description:**

**Models** SWC-8138631510-121F-R1-WPC and SWC-8138631510-121M-R1-WPC are right angle (90°) E-Band waveguide to coax adapters that cover the frequency range of 81 to 86 GHz. They are designed and manufactured for instrumentation grade quality but offered at a commercial grade price, allowing for an efficient transition between the rectangular waveguide and 1.0 mm coax connector.

**Features:**

- Low Insertion Loss and VSWR
- Instrumentation Grade
- DC Open Circuit

**Applications:**

- Test Lab
- Instrumentations
- Sub-assemblies

**Electrical Specifications:**

Parameter	Minimum	Typical	Maximum
Frequency Range	81 GHz		86 GHz
Insertion Loss		1.0 dB	
Return Loss		15 dB	
Power Handling			10 W (CW)
Specification Temperature		+25 °C	
Operating Temperature	-40 °C		+85 °C

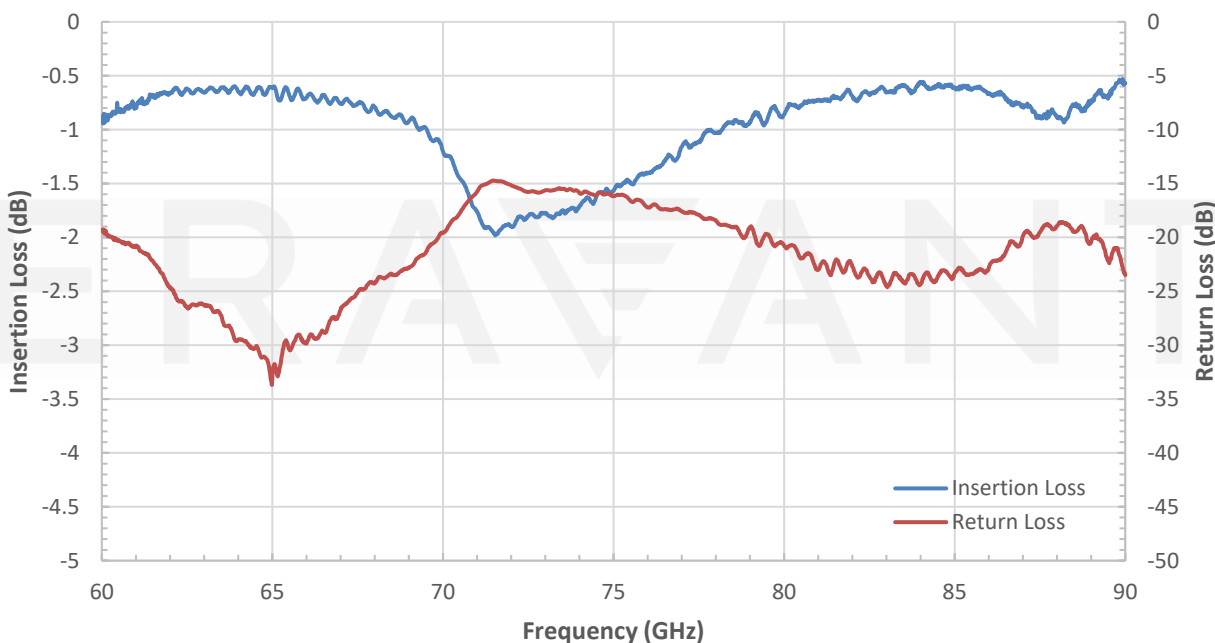
**Mechanical Specifications:**

Item	Parameter
Waveguide Port	WR-12 with UG-387/U Anti-Cocking Flange
Coaxial Port	1.0 mm Female for Model Number: SWC-121F-R1-WPC
	1.0 mm Male for Model Number: SWC-121M-R1-WPC
Material	Aluminum
Finish	Gold Plated
Weight	0.4 Oz
Outline	WC-ER-A

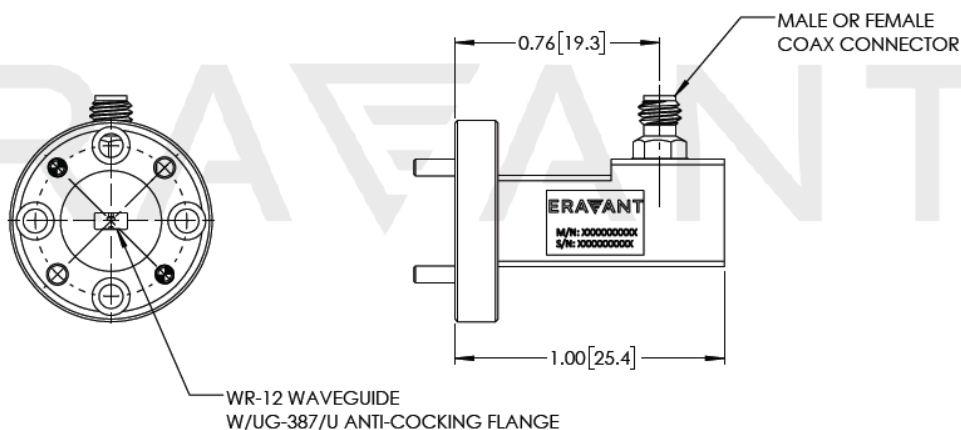
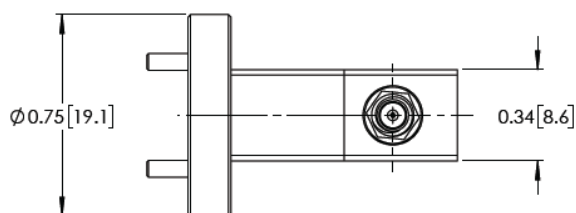


## E-Band Waveguide to 1.0 mm Connector Adapter, Right Angle, 81 to 86 GHz

## Typical Measured Performance vs Frequency



## Mechanical Outline: (Unless otherwise specified, all dimensions are in inches [millimeters])



---

**E-Band Waveguide to 1.0 mm Connector Adapter, Right Angle, 81 to 86 GHz****Note:**

- All data presented is collected from a sample lot. Actual data may vary unit to unit, slightly.
- All testing was performed under +25 °C case temperature.
- Eravant reserves the right to change the information presented without notice.

**Caution:**

- Any foreign objects in the waveguide will cause performance degradation and may damage the adapter.
- Proper torque,  $4.0 \pm 0.15$  inch-pounds ( $0.45 \pm 0.02$  Nm), should be used. **Eravant torque wrench, model SCH-06004-S1, is highly recommended.**

ERAVANT

