



## WR-75 Waveguide to SMA Connector Adapter, Right Angle

### Description:

Models **SWC-75SF-R5** and **SWC-75SM-R5** are right angle (90°) WR-75 waveguide to SMA coax adapters that cover the frequency range of 10 to 15 GHz. They are designed and manufactured for instrumentation grade quality but offered at a commercial grade price, allowing for an efficient transition between the rectangular waveguide and SMA coax connector. The end launch (180°) versions are offered under model numbers **SWC-75SF-E5** and **SWC-75SM-E5**.



### Features:

- Full Waveguide Band Coverage
- Low Insertion Loss
- Instrumentation Grade
- DC Open Circuit

### Applications:

- Test Lab
- Instrumentation
- Sub-assemblies

### Electrical Specifications:

Parameter	Minimum	Typical	Maximum
Frequency Range	10 GHz		15 GHz
Insertion Loss		0.2 dB	
Return Loss		20 dB	
Power Handling			150 W (CW)
Specification Temperature		+25 °C	
Operating Temperature	-40 °C		+85 °C

### Mechanical Specifications:

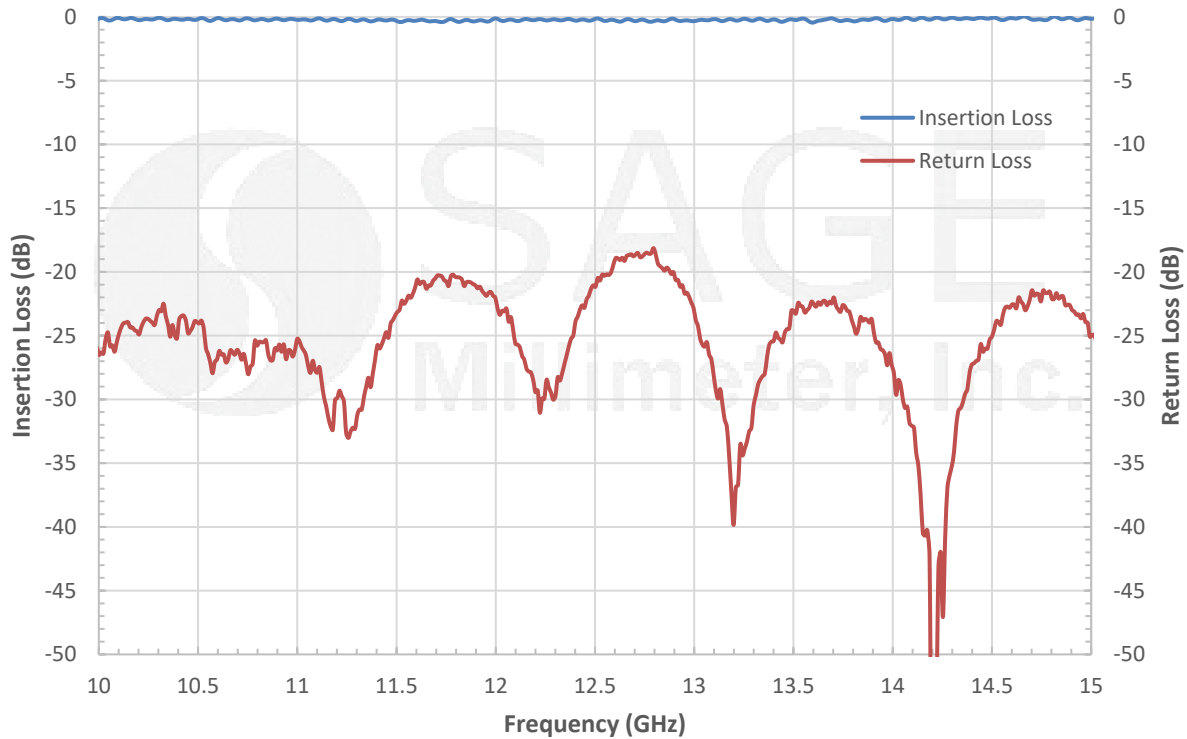
Item	Specification
Waveguide Port	WR-75 Waveguide with Standard Flange
Coaxial Port	SMA (F) for Model Number: <b>SWC-75SF-R5</b> SMA (M) for Model Number: <b>SWC-75SM-R5</b>
Material	Aluminum
Inner Finish	Silver Plated
Outer Finish	Black Paint
Weight	1.8 oz.
Outline	WC-7R-SX1



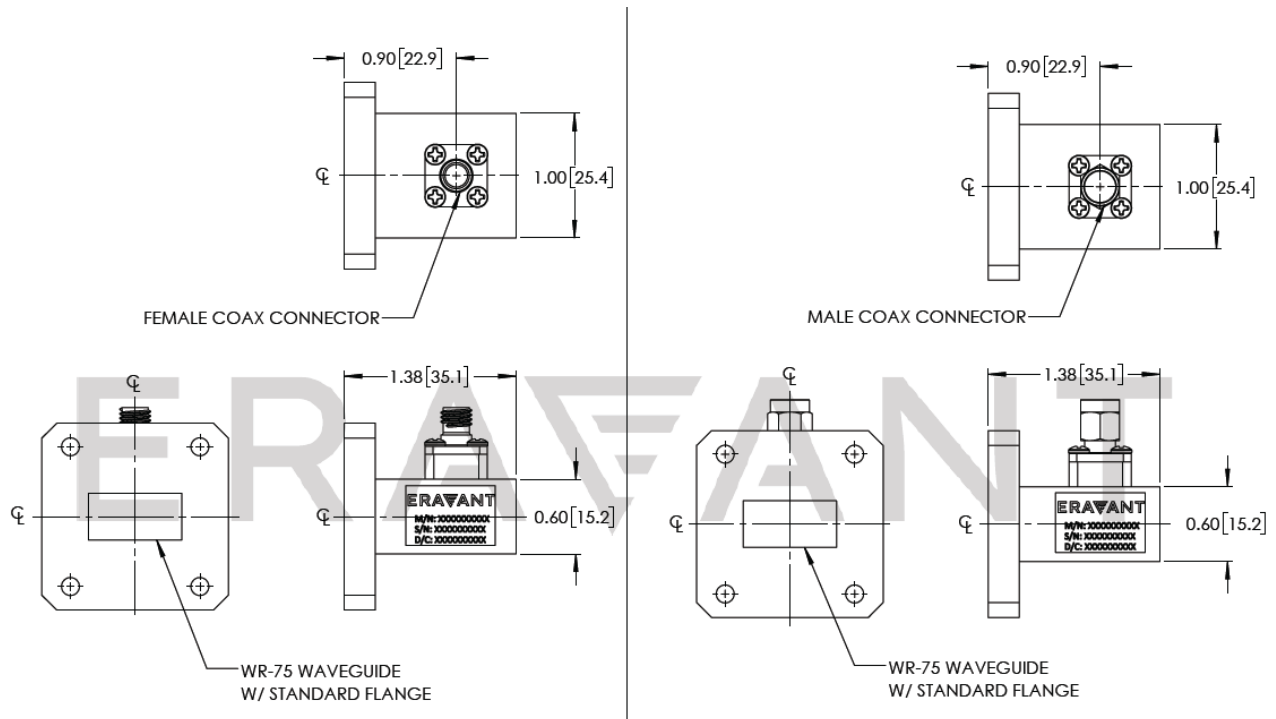


## WR-75 Waveguide to SMA Connector Adapter, Right Angle

### Typical Insertion Loss and Return Loss vs Frequency



### Mechanical Outline: (Unless otherwise specified, all dimensions are in inches [millimeters])





## WR-75 Waveguide to SMA Connector Adapter, Right Angle

### Note:

- All data presented is collected from a sample lot. Actual data may vary unit to unit, slightly.
- All testing was performed under +25 °C case temperature.
- SAGE Millimeter, Inc. reserves the right to change the information presented without notice.

### Caution:

- Any foreign objects in the waveguide will cause performance degradation and possible device damage.
- Proper torque,  $8.0 \pm 0.15$  inch-pounds ( $0.90 \pm 0.02$  Nm), should be applied. **SAGE Millimeter torque wrench, model SCH-08008-S1, is highly recommended.**



SAGE  
Millimeter, Inc.

