

E-Band Waveguide to 1.0 mm Connector Adapter, Right Angle, 71 to 86 GHz**Description:**

Models SWC-7138631510-121F-R1-WPC and SWC-7138631510-121M-R1-WPC are right angle (90°) E-Band waveguide to coax adapters that cover the frequency range of 71 to 86 GHz. They are designed and manufactured for instrumentation grade quality but offered at a commercial grade price, allowing for an efficient transition between the rectangular waveguide and 1.0 mm coax connector.

**Features:**

- Low Insertion Loss and VSWR
- Instrumentation Grade
- DC Open Circuit

Applications:

- Test Lab
- Instrumentations
- Sub-assemblies

Electrical Specifications:

Parameter	Minimum	Typical	Maximum
Frequency Range	71 GHz		86 GHz
Insertion Loss		1.0 dB	
Return Loss		15 dB	
Power Handling			10 W (CW)
Specification Temperature		+25 °C	
Operating Temperature	-40 °C		+85 °C

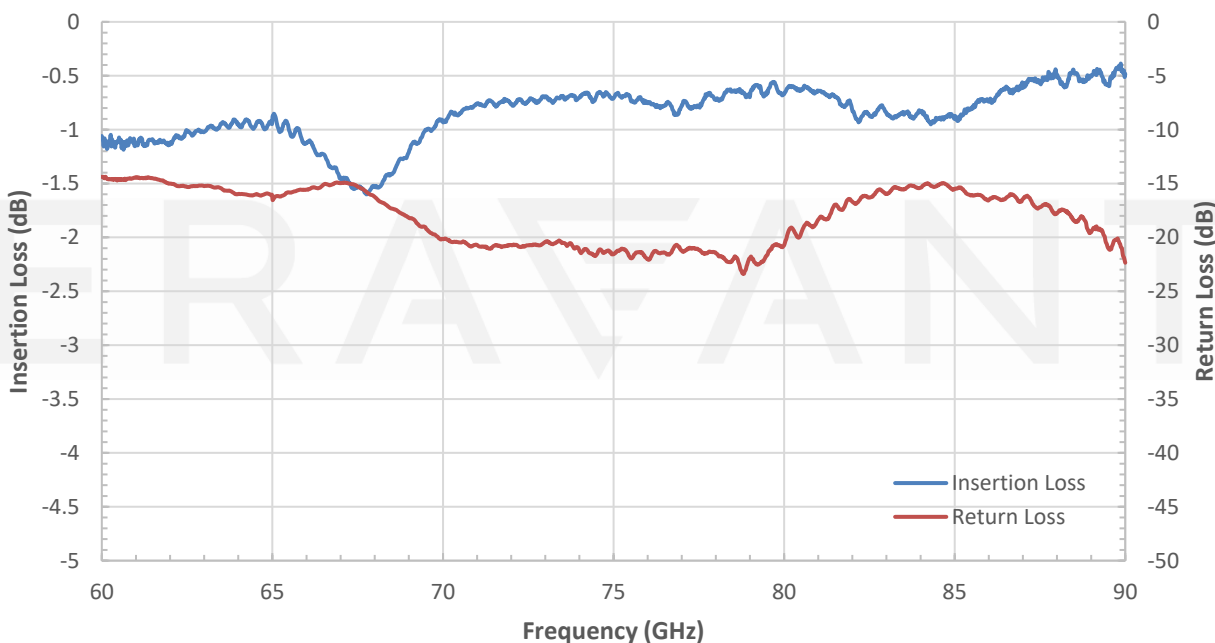
Mechanical Specifications:

Item	Parameter
Waveguide Port	WR-12 with UG-387/U Anti-Cocking Flange
Coaxial Port	1.0 mm Female for Model Number: SWC-121F-R1-WPC
	1.0 mm Male for Model Number: SWC-121M-R1-WPC
Material	Aluminum
Finish	Gold Plated
Weight	0.4 Oz
Outline	WC-ER-A

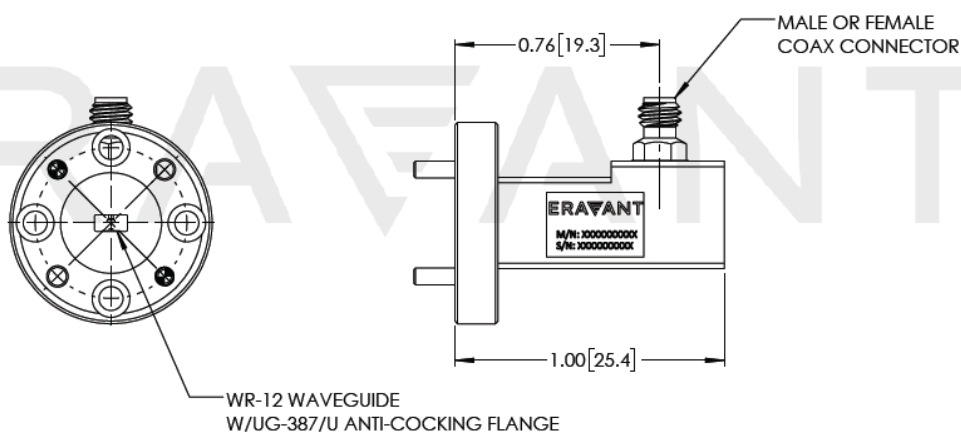
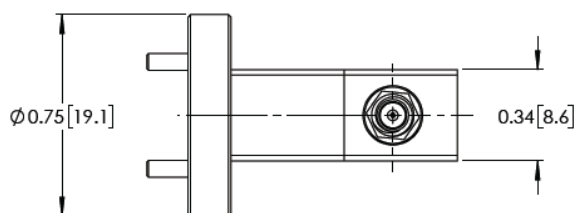


E-Band Waveguide to 1.0 mm Connector Adapter, Right Angle, 71 to 86 GHz

Typical Measured Performance vs Frequency



Mechanical Outline: (Unless otherwise specified, all dimensions are in inches [millimeters])



E-Band Waveguide to 1.0 mm Connector Adapter, Right Angle, 71 to 86 GHz**Note:**

- All data presented is collected from a sample lot. Actual data may vary unit to unit, slightly.
- All testing was performed under +25 °C case temperature.
- Eravant reserves the right to change the information presented without notice.

Caution:

- Any foreign objects in the waveguide will cause performance degradation and may damage the adapter.
- Proper torque, 4.0 ± 0.15 inch-pounds (0.45 ± 0.02 Nm), should be used. **Eravant torque wrench, model SCH-06004-S1, is highly recommended.**

ERAVANT

