



K-Band Waveguide to 2.4 mm Connector Adapter, Right Angle

Description:

Models SWC-422F-R1 and SWC-422M-R1 are right angle (90°) K-Band waveguide to coax adapters that cover the frequency range of 18 to 26.5 GHz. They are designed and manufactured for instrumentation grade quality but offered at a commercial grade price, allowing for an efficient transition between the rectangular waveguide and 2.4 mm coax connector. The end launch (180°) versions are offered under model numbers SWC-422F-E1 and SWC-422M-E1.



Features:

- Broad Band Coverage
- Lower Insertion Loss and VSWR
- Instrumentation Grade
- DC Open Circuit

Applications:

- Test Lab
- Instrumentations
- Sub-assemblies

Electrical Specifications:

Parameter	Minimum	Typical	Maximum
Frequency Range	18 GHz		26.5 GHz
Insertion Loss*		0.3 dB	0.4 dB
Return Loss	17 dB	20 dB	
Power Handling			40 Watts
Specification Temperature		+25°C	
Operating Temperature	-40°C		+85°C

*Insertion loss is tested back-to-back with a male and female adapter, and the result is divided by 2

Mechanical Specifications:

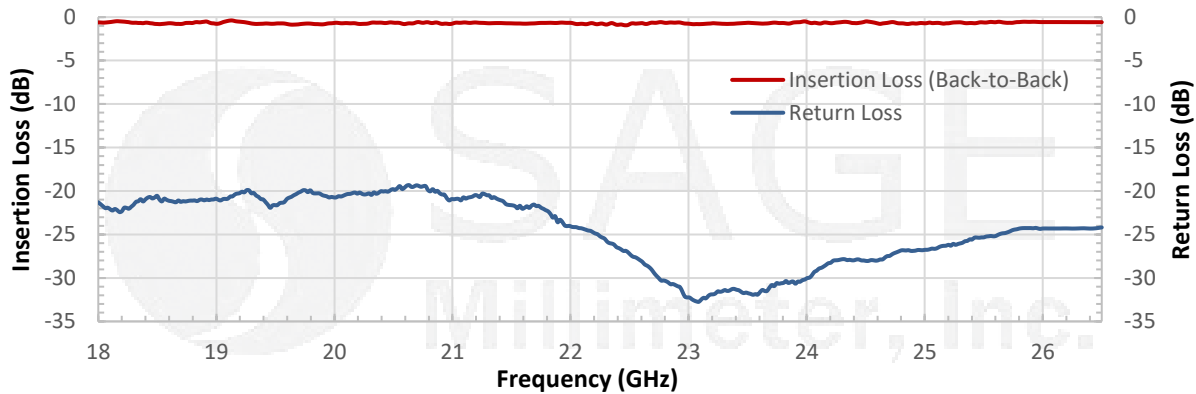
Item	Parameter
Waveguide Port	WR-42 Waveguide with UG-595/U Flange
Coaxial Port	2.4 mm Female for Model Number: SWC-422F-R1
Coaxial Port	2.4 mm Male for Model Number: SWC-422M-R1
Size	0.85" (L) x 0.88" (S)
Housing Material	Aluminum
Finish	Gold Plated
Weight	0.44 Oz
Outline	WC-KR



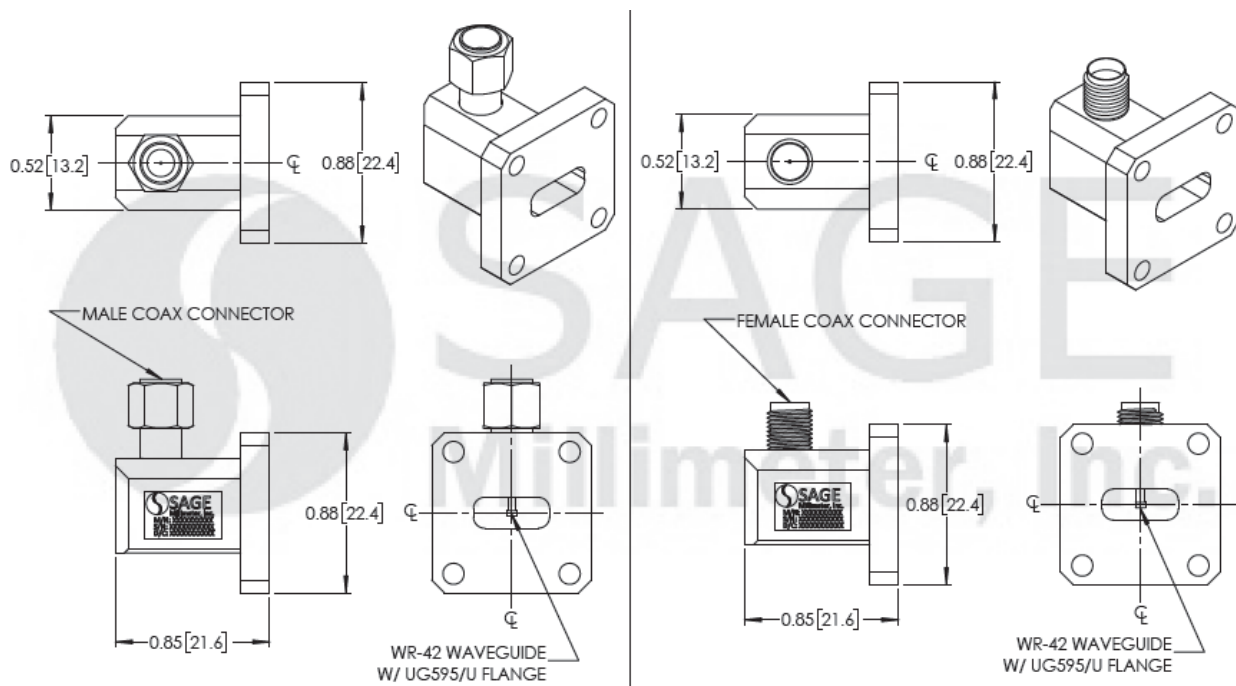


K-Band Waveguide to 2.4 mm Connector Adapter, Right Angle

Typical Return Loss and Back to Back Insertion Loss vs. Frequency



Mechanical Outline: (Unless otherwise specified, all dimensions are in inches [millimeters])



Note:

- All data presented is collected from a sample lot. Actual data may vary unit to unit, slightly.
- All testing was performed under +25 °C case temperature.
- SAGE Millimeter, Inc. reserves the right to change the information presented without notice.

Caution:

- Any foreign objects in the waveguide will cause performance degradation and may damage the adapter.
- Proper torque, 8.0 ± 0.15 inch-pounds (0.90 ± 0.02 Nm), should be applied. **SAGE Millimeter torque wrench, model SCH-08008-S1, is highly recommended.**



www.sagemillimeter.com | 3043 Kashiwa Street, Torrance, CA 90505
 Phone: 424-757-0168 | Fax: 424-757-0188 | Email: sales@sagemillimeter.com