

# SWC-34KF-E1-WR and SWC-34KM-E1-WR

ERAVANT

## WR-34 Waveguide to Coax Panel Mount Adapter, End Launch

**SWC-34KF-E1-WR and SWC-34KM-E1-WR** are end launch (180°) WR-34 waveguide to coax panel mount adapters that cover the frequency range of 22 to 33 GHz. They are designed and manufactured for panel mount instrumentation applications and allow for an efficient transition between the rectangular waveguide and 2.92 mm (K) coax connector. These adapters are also specially designed to be weather resistant.



### Electrical Specifications:

| Parameter                 | Minimum | Typical | Maximum   |
|---------------------------|---------|---------|-----------|
| Frequency Range           | 22 GHz  |         | 33 GHz    |
| Insertion Loss            |         | 0.35 dB | 0.50 dB   |
| Return Loss               | 17 dB   | 20 dB   |           |
| Power Handling            |         |         | 50 W (CW) |
| Specification Temperature |         | +25°C   |           |
| Operating Temperature     | -40°C   |         | +85°C     |

\*Insertion loss is tested back-to-back with a male and female adapter, the result is divided by 2.

### Mechanical Specifications:

| Item            | Specification  |
|-----------------|--|
| Waveguide       | WR-34 with UG-1530/U Flange with O-Ring                |
| Coaxial         | 2.92 mm (K) Female for Model Number: SWC-34KF-E1-WR    |
| Coaxial         | 2.92 mm (K) Male for Model Number: SWC-34KM-E1-WR      |
| Size            | 1.45" (L) x 1.45" (Ø) for Model Number: SWC-34KF-E1-WR |
| Size            | 1.58" (L) x 1.45" (Ø) for Model Number: SWC-34KM-E1-WR |
| Body Material   | Aluminum   |
| Flange Material | Brass  |
| Finish          | Gold Plated  |
| Weight          | 3.0 Oz   |
| Outline         | WC-3E-WR   |

### ECCN

EAR99

### FEATURES

- Full Waveguide Band Coverage
- Lower Insertion Loss and VSWR
- Instrumentation Grade
- DC Short Circuit
- Weather Resistant

### APPLICATIONS

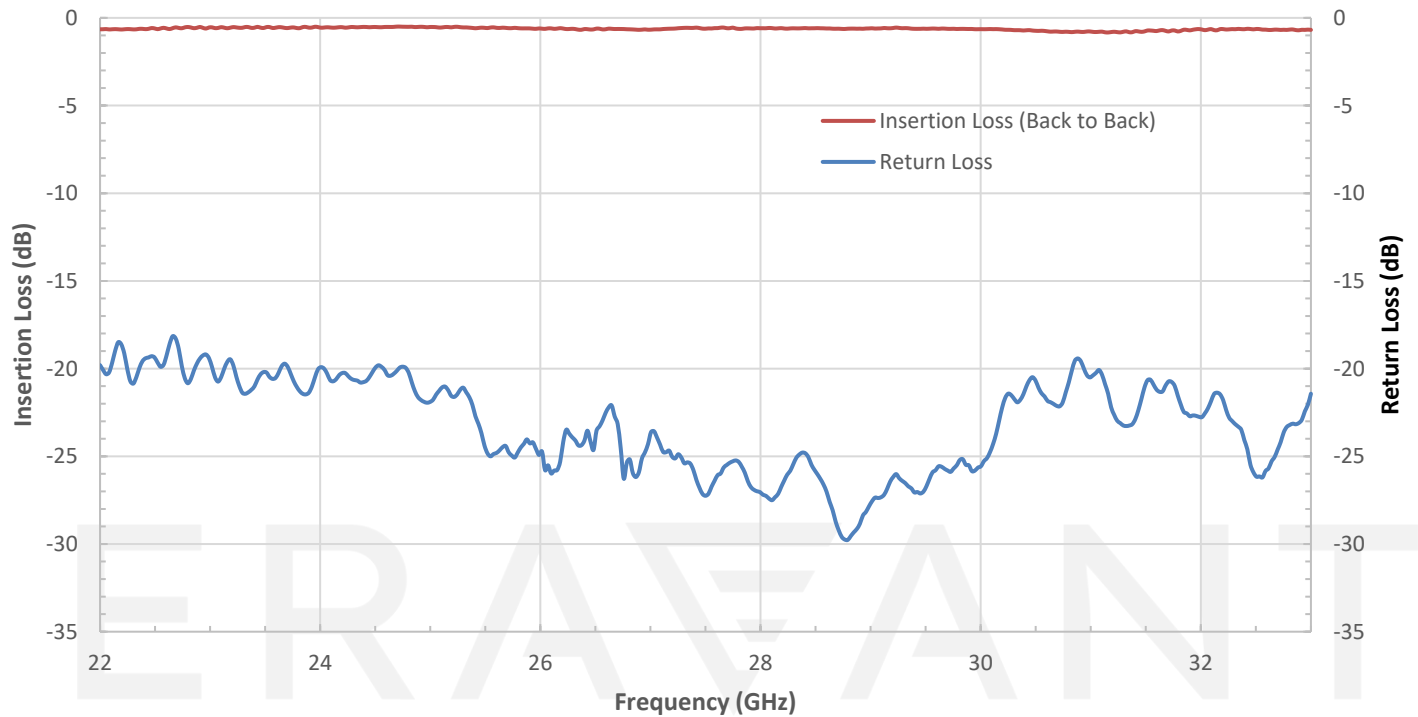
- Test Labs
- Instrumentations
- Communication Systems

### SUPPLEMENTAL DETAILS

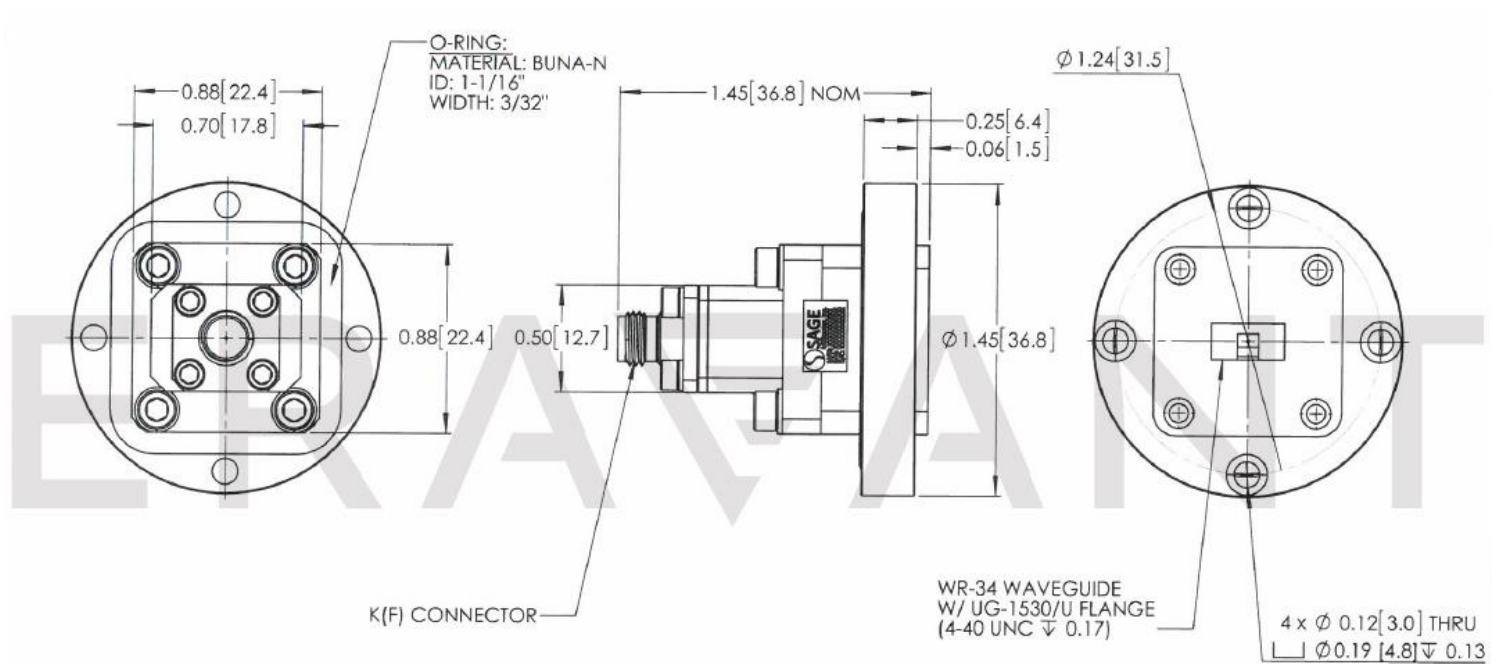


## SWC-34KF-E1-WR and SWC-34KM-E1-WR

Typical Return Loss & Back to Back Insertion Loss vs. Frequency



**Mechanical Outline:** (Unless otherwise specified, all dimensions are in inches [millimeters])



## SWC-34KF-E1-WR and SWC-34KM-E1-WR

**NOTE:**

- On condition that test data is provided it is collected from a sample lot. Actual data may vary slightly from unit to unit. All testing is performed under +25 °C room temperature.
- On condition that simulated test data is provided, actual measured data may slightly vary.
- Eravant reserves the right to change the information presented without notice.

**CAUTION:**

- If a waveguide is present, any foreign objects in the waveguide will cause performance degradation and may damage or destroy the unit.
- For 1.35 mm, 1.85 mm, 2.4 mm, 2.92 mm, and SMA connectors proper torque should be applied:  $8.0 \pm 0.15$  inch-pounds ( $0.90 \pm 0.02$  Nm). Torque wrench model [SCH-08008-S1](#) is highly recommended.

ERAVANT  
MAKING MILLIMETERWAVE ACCESSIBLE

ERAVANT  
MAKING MILLIMETERWAVE ACCESSIBLE