

WR-34 Waveguide to K Connector Adapter, End Launch

Description:

Model SWC-34KF-E1-WPC is an end launch (180°) WR-34 waveguide to coax adapters that cover the frequency range of 22 to 33 GHz. They are designed and manufactured for instrumentation grade quality but offered at a commercial grade price, allowing for an efficient transition between the rectangular waveguide and 2.92 mm (K) coax connector. The right angle (90°) versions are offered under model numbers SWC-34KF-R1 and SWC-34KM-R1.



Features:

- Broad Band Coverage
- Lower Insertion Loss and VSWR
- Instrumentation Grade
- DC Short Circuit

Applications:

- Test Lab
- Instrumentations
- Sub-assemblies

Electrical Specifications:

Parameter	Minimum	Typical	Maximum
Frequency Range	22 GHz		33 GHz
Insertion Loss*		0.35 dB	0.50 dB
Return Loss	17 dB	20 dB	
Power Handling			50 Watts
Specification Temperature		+25°C	
Operating Temperature	-40°C		+85°C

*Insertion loss is tested back-to-back with a male and female adapter; the result is divided by 2

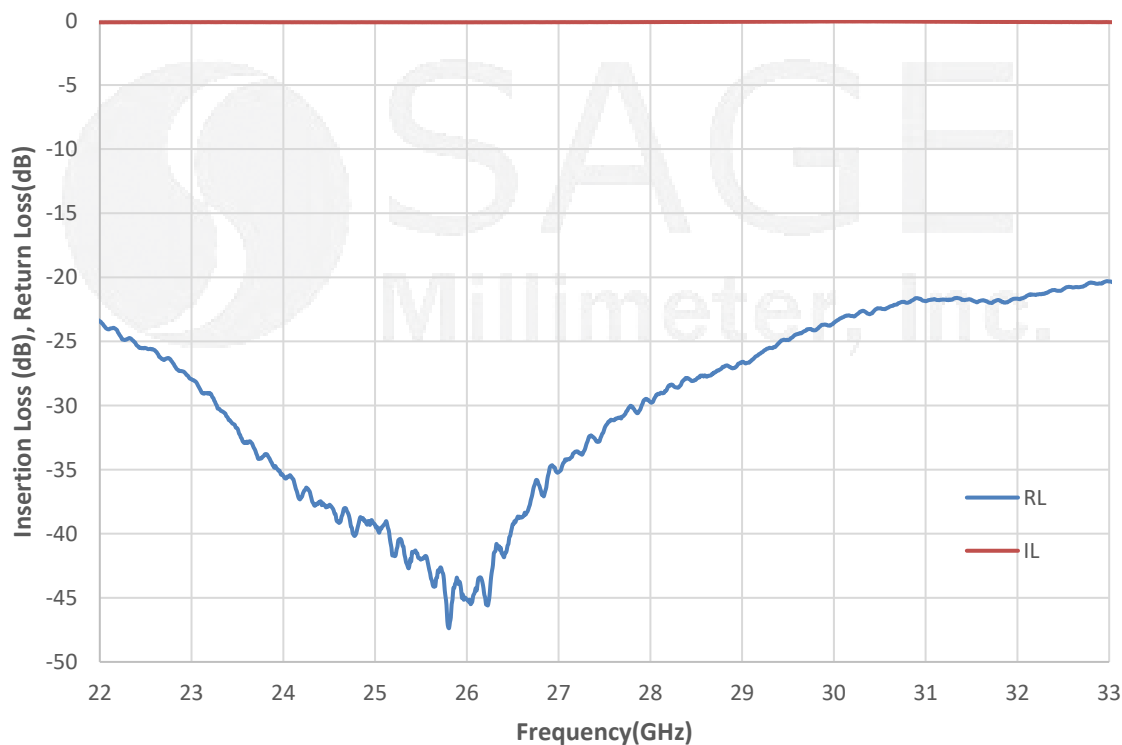
Mechanical Specifications:

Item	Specification
Waveguide Port	WR-34 Waveguide with UG-1530/U Flange
Coaxial Port	2.92 mm (K) Female for Model Number: SWC-34KF-E1
Coaxial Port	2.92 mm (K) Male for Model Number: SWC-34KM-E1
Size	0.97" (L) x 0.88" (S) for Model Number: SWC-34KF-E1
Size	1.10" (L) x 0.88" (S) for Model Number: SWC-34KM-E1
Housing Material	Aluminum
Finish	Gold Plated
Weight	0.5 Oz
Outline	WC-3E

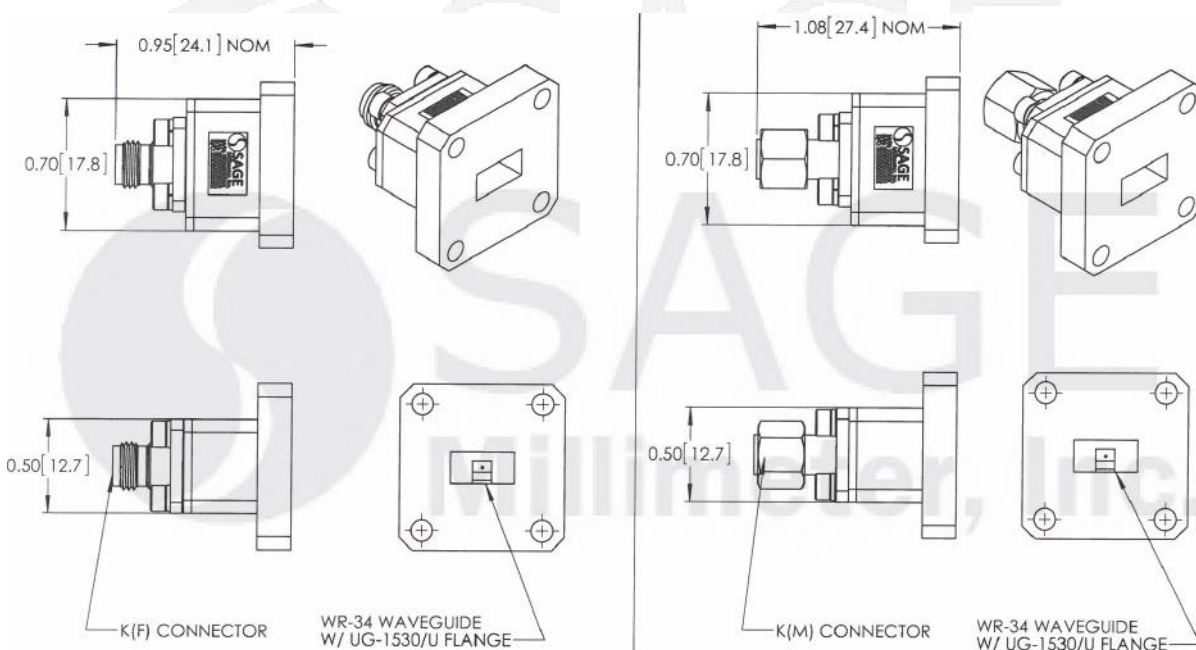


WR-34 Waveguide to K Connector Adapter, End Launch

Measured Insertion Loss, Return Loss Vs Frequency



Mechanical Outline: (Unless otherwise specified, all dimensions are in inches [millimeters])





WR-34 Waveguide to K Connector Adapter, End Launch

Note:

- All data presented is collected from a sample lot. Actual data may vary unit to unit, slightly.
- All testing was performed under +25 °C case temperature.
- Eravant reserves the right to change the information presented without notice.

Caution:

- Any foreign objects in the waveguide will cause performance degradation and may damage the adapter.
- Proper torque, 8.0 ± 0.15 inch-pounds (0.90 ± 0.02 Nm), should be applied. **SAGE Millimeter torque wrench, model SCH-08008-S1, is highly recommended.**

