



Ka-Band Waveguide to K Connector Adapter, End Launch

Description:

Models SWC-28KF-E1 and SWC-28KM-E1 are end launch (180°) Ka-Band waveguide to coax adapters that cover the frequency range of 26.5 to 40 GHz. They are designed and manufactured for instrumentation grade quality but offered at a commercial grade price, allowing for an efficient transition between the rectangular waveguide and 2.92 mm (K) coax connector. The right angle (90°) versions are offered under models **SWC-28KF-R1** and **SWC-28KM-R1**.



Features:

- Broad Band Coverage
- Lower Insertion Loss and VSWR
- Instrumentation Grade
- DC Short Circuit

Applications:

- Test Lab
- Instrumentations
- Sub-assemblies

Electrical Specifications:

Parameter	Minimum	Typical	Maximum
Frequency Range	26.5 GHz		40.0 GHz
Insertion Loss*		0.35 dB	0.50 dB
Return Loss	17 dB	20 dB	
Power Handling			20 W (CW)
Specification Temperature		+25 °C	
Operating Temperature	-40 °C		+85 °C

*Insertion loss is tested back to back with a male and female adapter, the result is divided by 2.

Mechanical Specifications:

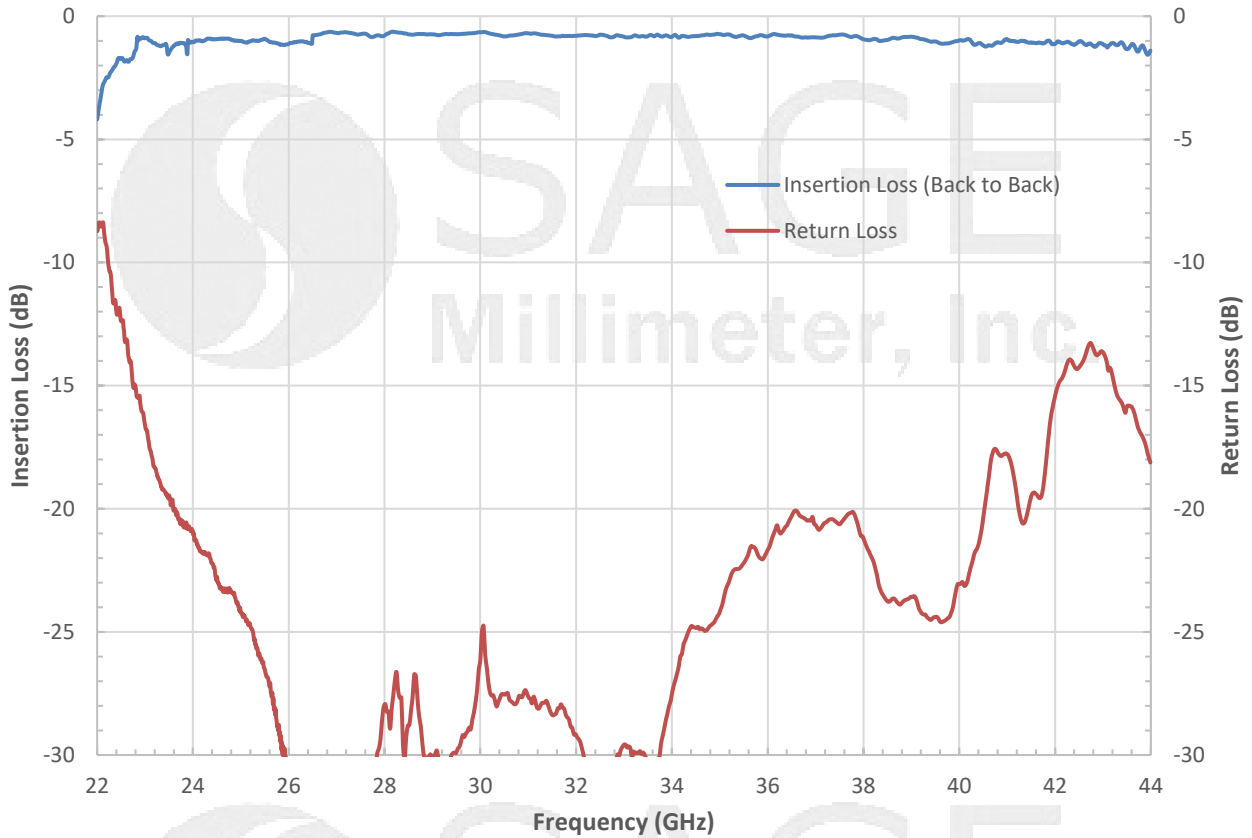
Item	Specification
Waveguide	WR-28 with UG-599/U Flange
Connector	2.92 mm (K) Female for Model Number: SWC-28KF-E1
Connector	2.92 mm (K) Male for Model Number: SWC-28KM-E1
Insertion Length	0.49"
Housing Material	Aluminum
Finish	Gold Plated
Weight	0.2 Oz
Outline	WC-AE



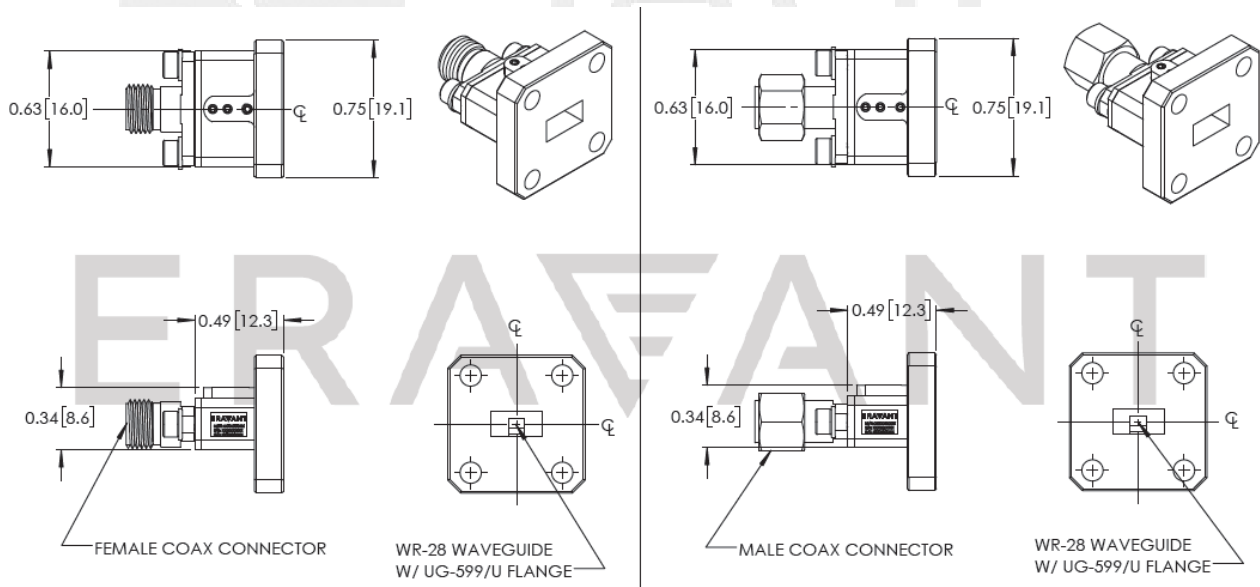


Ka-Band Waveguide to K Connector Adapter, End Launch

Typical Performance vs. Frequency



Mechanical Outline: (Unless otherwise specified, all dimensions are in inches [millimeters])





Ka-Band Waveguide to K Connector Adapter, End Launch

Note:

- All data presented is collected from a sample lot. Actual data may vary unit to unit, slightly.
- All testing was performed under +25 °C case temperature.
- SAGE Millimeter, Inc. reserves the right to change the information presented without notice.

Caution:

- Any foreign objects in the waveguide will cause performance degradation and may damage the adapter.
- Proper torque, 8.0 ± 0.15 inch-pounds (0.90 ± 0.02 Nm), should be applied. **SAGE Millimeter torque wrench, model SCH-08008-S1, is highly recommended.**

