

## Q-Band Waveguide to 1.85 mm Connector Adapter, Right Angle

### Description:

**Models SWC-22VF-R1-WP** are right angle (90°) Q-Band waveguide to coax adapters that cover the frequency range of 33 to 50 GHz. They are designed and manufactured for instrumentation grade quality but offered at a commercial grade price, allowing for an efficient transition between the rectangular waveguide and 1.85 mm (V) coax connector. The end launch (180°) versions are offered under model numbers **SWC-22VF-E1** and **SWC-22VM-E1**.



### Features:

- Broadband Coverage
- Low Insertion Loss and VSWR
- Instrumentation Grade
- DC Open Circuit

### Applications:

- Test Lab
- Instrumentations
- Sub-assemblies

### Electrical Specifications:

Parameter	Minimum	Typical	Maximum
Frequency Range	33 GHz		50 GHz
Insertion Loss		0.4 dB	0.7 dB
Return Loss	16 dB	18 dB	
Power Handling			30 W (CW)
Specification Temperature		+25 °C	
Operating Temperature	-40 °C		+85 °C

\*Insertion loss is tested back to back with a male and female adapter, the result is divided by 2.

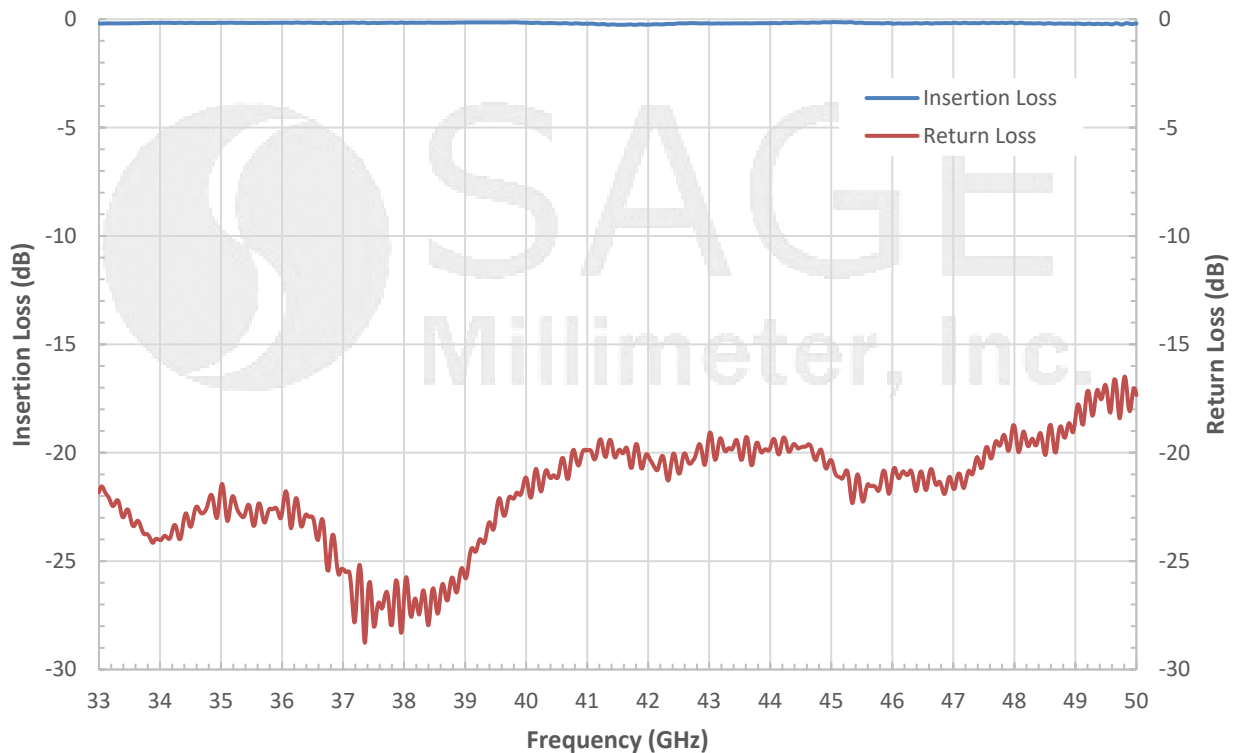
### Mechanical Specifications:

Item	Parameter
Waveguide Port	WR-22 Waveguide with UG-383/U Flange
Coaxial Port	1.85 mm (V) Female
Material	Aluminum
Finish	Gold Plated
Weight	0.5 Oz
Outline	WC-QR

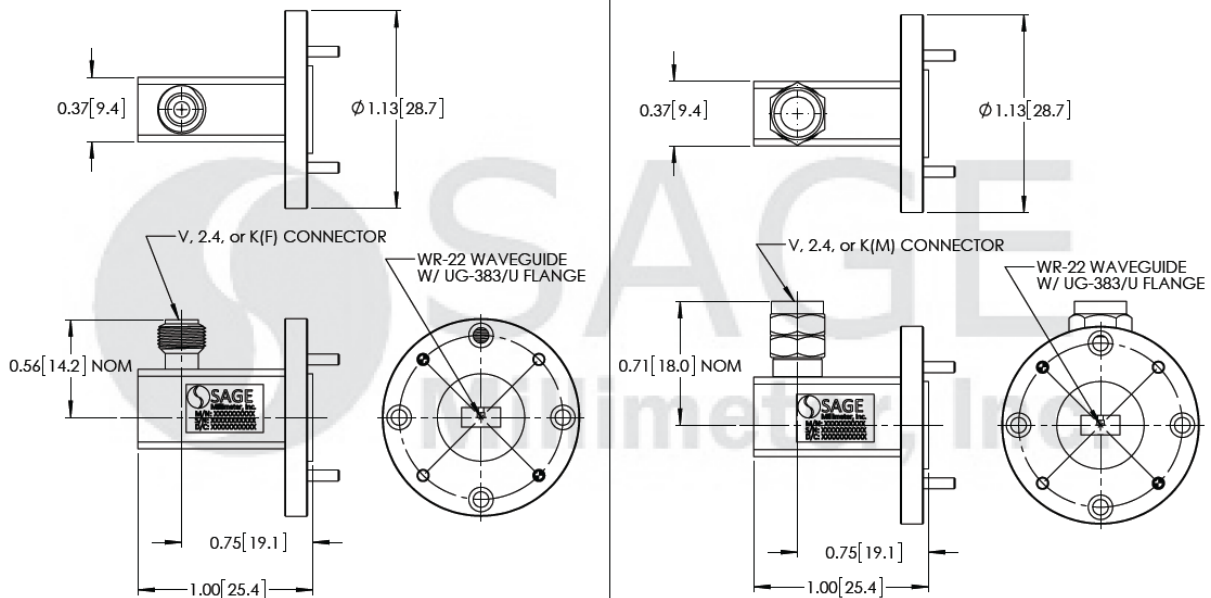


## Q-Band Waveguide to 1.85 mm Connector Adapter, Right Angle

### Typical Insertion Loss and Return Loss vs Frequency



### Mechanical Outline: (Unless otherwise specified, all dimensions are in inches [millimeters])





## Q-Band Waveguide to 1.85 mm Connector Adapter, Right Angle

### Note:

- All data presented is collected from a sample lot. Actual data may vary unit to unit, slightly.
- All testing was performed under +25 °C case temperature.
- Eravant reserves the right to change the information presented without notice.

### Caution:

- Any foreign objects in the waveguide will cause performance degradation and possible device damage.
- Proper torque,  $8.0 \pm 0.15$  inch-pounds ( $0.90 \pm 0.02$  Nm), should be applied. **SAGE Millimeter torque wrench, model SCH-08008-S1, is highly recommended.**

