

U-Band Waveguide to 1.85 mm Connector Adapter, End Launch, UG-599/U Flange

Description:

SWC-19VF-E1-599-0.44-WP and **SWC-19VM-E1-599-0.44-WP** are end launch (180°) U-Band waveguide to coax adapters that cover the frequency range of 40 to 60 GHz. They are designed and manufactured for instrumentation grade quality but offered at a commercial grade price, allowing for an efficient transition between the rectangular waveguide and 1.85 mm (V) coax connector. The adapters offer 18 dB typical return loss. The right angle (90°) versions are offered under model numbers SWC-19VF-R1-599 and SWC-19VM-R1-599.



Features:

- Full Waveguide Band Coverage
- Low Insertion Loss and VSWR
- Instrumentation Grade
- DC Short Circuit

Applications:

- Test Lab
- Instrumentation
- Sub-assemblies

Electrical Specifications:

Parameter	Minimum	Typical	Maximum
Frequency Range	40 GHz		60 GHz
Insertion Loss		0.5 dB	0.8 dB
Return Loss	16 dB	18 dB	
Power Handling			40 W (CW)
Specification Temperature		+25 °C	
Operating Temperature	-45 °C		+85 °C

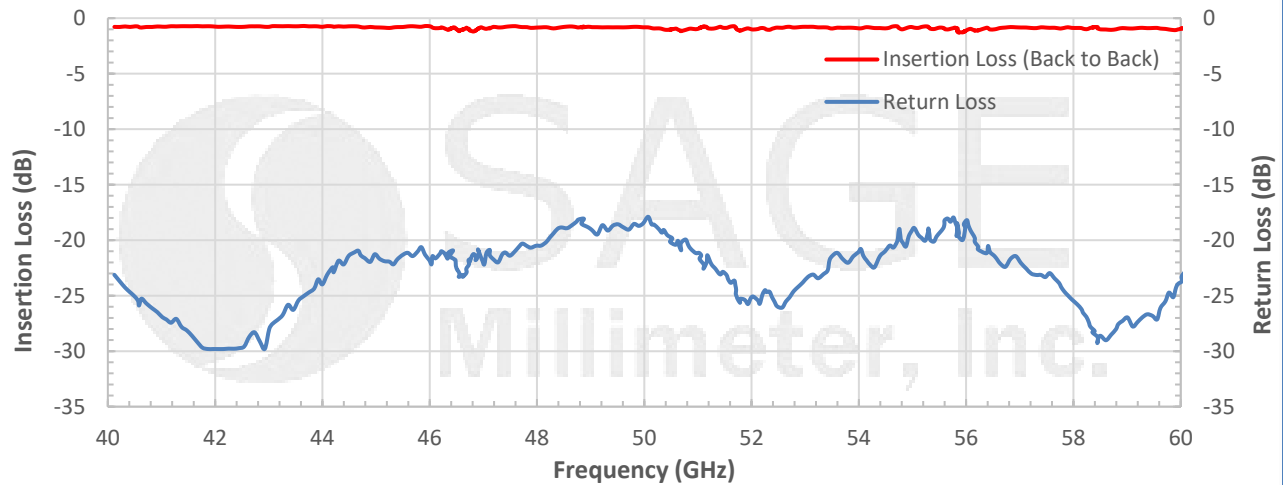
Mechanical Specifications:

Item	Parameter
Waveguide	WR-19 with UG-599/U Flange
Coaxial	1.85 mm (V) Female for Model Number: SWC-19VF-E1-599-0.44-WP
Coaxial	1.85 mm (V) Male for Model Number: SWC-19VM-E1-599-0.44-WP
Size	0.44" (L) x 0.63" (W) x 0.25" (H)
Housing Material	Aluminum
Finish	Gold Plated
Weight	0.4 Oz
Outline	WC-UE-599

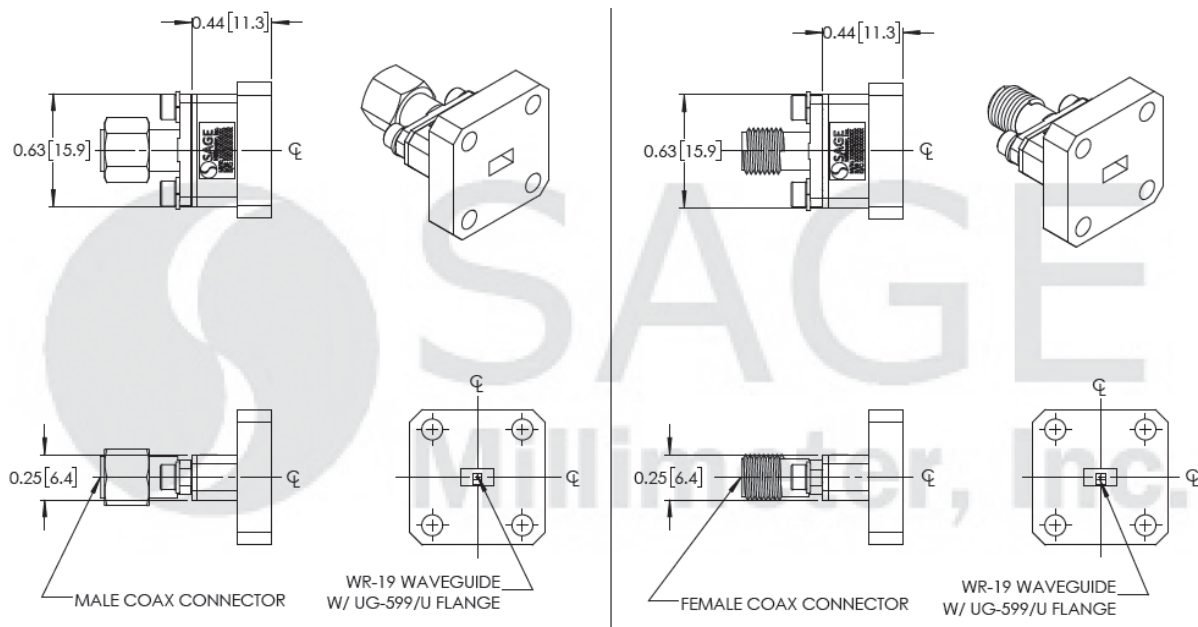


U-Band Waveguide to 1.85 mm Connector Adapter, End Launch, UG-599/U Flange

Typical Return Loss and Back to Back Insertion Loss vs. Frequency



Mechanical Outline: (Unless otherwise specified, all dimensions are in inches [millimeters])



Note:

- All data presented is collected from a sample lot. Actual data may vary unit to unit, slightly.
- All testing was performed under +25 °C case temperature.
- Eravant reserves the right to change the information presented without notice.

Caution:

- Any foreign objects in the waveguide will cause performance degradation and may damage the adapter.
- Proper torque, 8.0 ± 0.15 inch-pounds (0.90 ± 0.02 Nm), should be applied. **Eravant torque wrench, model [SCH-08008-S1](#), is highly recommended.**



www.eravant.com | 501 Amapola Avenue, Torrance, CA 90501
Phone: 424-757-0168 | Fax: 424-757-0188 | Email: support@eravant.com