

SWC-180KF-E1-WRD

WRD-180 Waveguide to K Connector Adapter, End Launch

SWC-180KF-E1-WRD is an end launch (180°) WRD-180 double ridged waveguide to coax adapter that cover the frequency range of 18 to 40 GHz. They are designed and manufactured for instrumentation grade quality but offered at a commercial grade price, allowing for an efficient transition between the double ridged waveguide and 2.92 mm (K) coax connector. The right angle (90°) versions are offered under models SWC-180KF-R1-WRD and SWC-180KM-R1-WRD.



Electrical Specifications:

Parameter	Minimum	Typical	Maximum
Frequency Range	18 GHz		40 GHz
Insertion Loss		0.5 dB	
Return Loss		15 dB	
Power Handling			20 W (CW)
Specification Temperature		+25°C	
Operating Temperature	-40°C		+85°C

*Insertion loss and return loss is tested back-to-back.

Mechanical Specifications:

Item	Specification
Waveguide Port	WRD-180 Double Ridged Waveguide with FPWRD180C24 Flange
Coaxial Port	2.92 mm (K) Female Connector
Material	Aluminum
Finish	Gold Plated
Weight	2.0 Oz
Outline	WC-180KE-WRD

ECCN

EAR99

FEATURES

- Broad Band Coverage
- Low Insertion Loss and VSWR
- Instrumentation Grade
- DC Short Circuit

APPLICATIONS

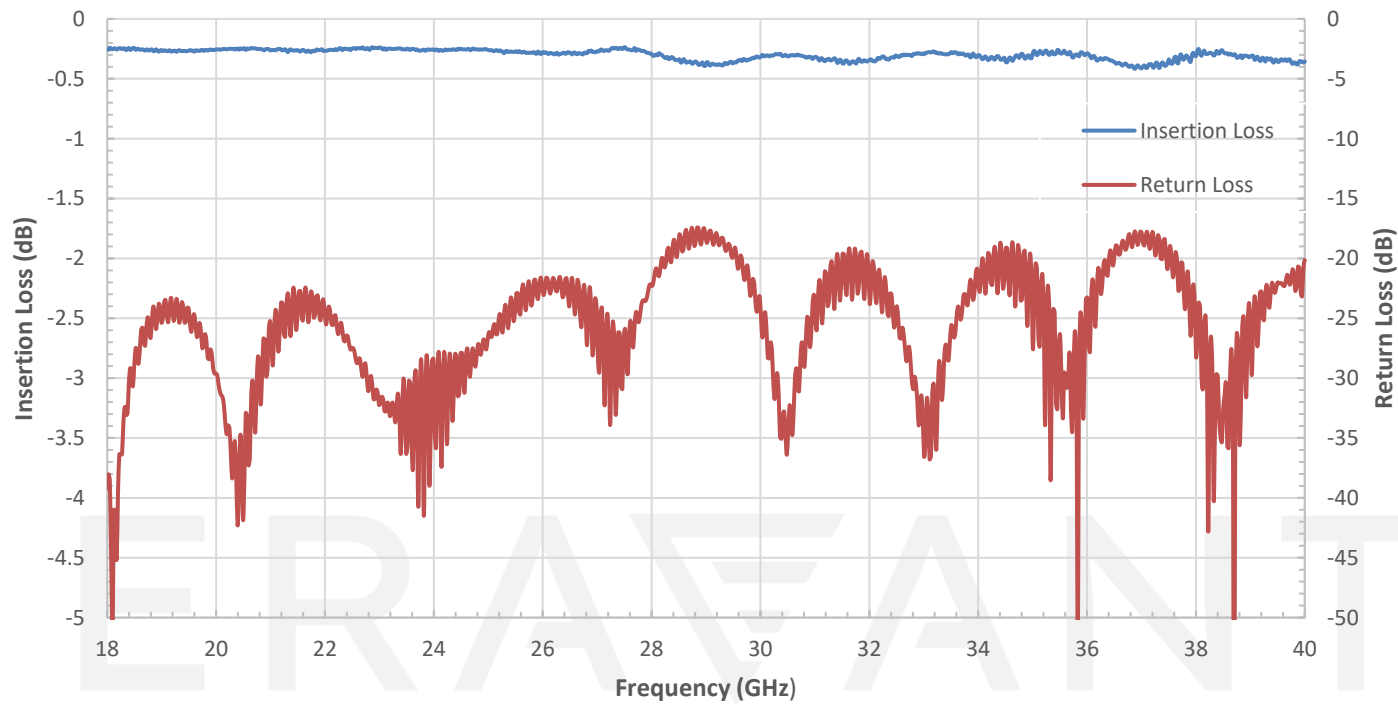
- Test Lab
- Instrumentations
- Sub-assemblies

SUPPLEMENTAL DETAILS

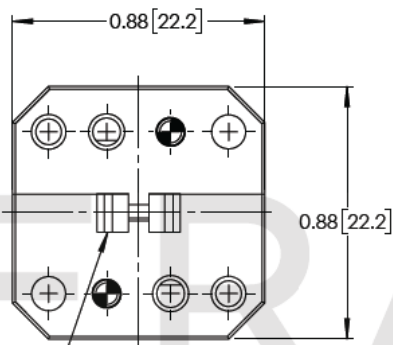


SWC-180KF-E1-WRD

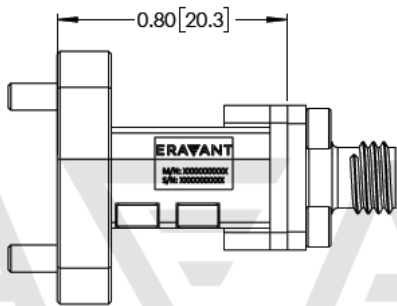
Typical Measured Performance vs Frequency



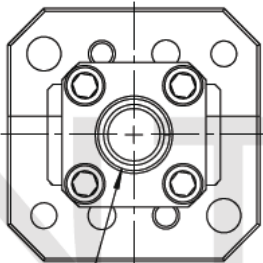
Mechanical Outline: (Unless otherwise specified, all dimensions are in inches [millimeters])



WRD180 DOUBLE RIDGE WAVEGUIDE
W/ FPWRD180C24 FLANGE



FEMALE OR MALE COAX CONNECTOR



NOTE:

- On condition that test data is provided it is collected from a sample lot. Actual data may vary slightly from unit to unit. All testing is performed under +25 °C room temperature.
- On condition that simulated test data is provided, actual measured data may slightly vary.
- Eravant reserves the right to change the information presented without notice.

CAUTION:

- If a waveguide is present, any foreign objects in the waveguide will cause performance degradation and may damage or destroy the unit.
- For 1.35 mm, 1.85 mm, 2.4 mm, 2.92 mm, and SMA connectors proper torque should be applied: 8.0 ± 0.15 inch-pounds (0.90 ± 0.02 Nm). Torque wrench model [SCH-08008-S1](#) is highly recommended.

ERAVANT
MAKING MILLIMETERWAVE ACCESSIBLE

ERAVANT
MAKING MILLIMETERWAVE ACCESSIBLE