

W-Band Waveguide to 1.0 mm Connector Adapter, Right Angle

Description:

Models **SWC-101F-R1** and **SWC-101M-R1** are right angle (90°) W-Band waveguide to coax adapters that cover the frequency range of 75 to 110 GHz. They are designed and manufactured for instrumentation grade quality but offered at a commercial grade price, allowing for an efficient transition between the rectangular waveguide and 1.0 mm coax connector. The end launch (180°) versions are offered under model numbers **SWC-101F-E1** and **SWC-101M-E1**.



Features:

- Full Waveguide Band Coverage
- Low Insertion Loss and VSWR
- Instrumentation Grade
- DC Open Circuit

Applications:

- Test Lab
- Instrumentations
- Sub-assemblies

Electrical Specifications:

Parameter	Minimum	Typical	Maximum
Frequency Range	75 GHz		110 GHz
Insertion Loss		1.2 dB	1.5 dB
Return Loss	12 dB	15 dB	
Power Handling			10 W (CW)
Specification Temperature		+25 °C	
Operating Temperature	-40 °C		+85 °C

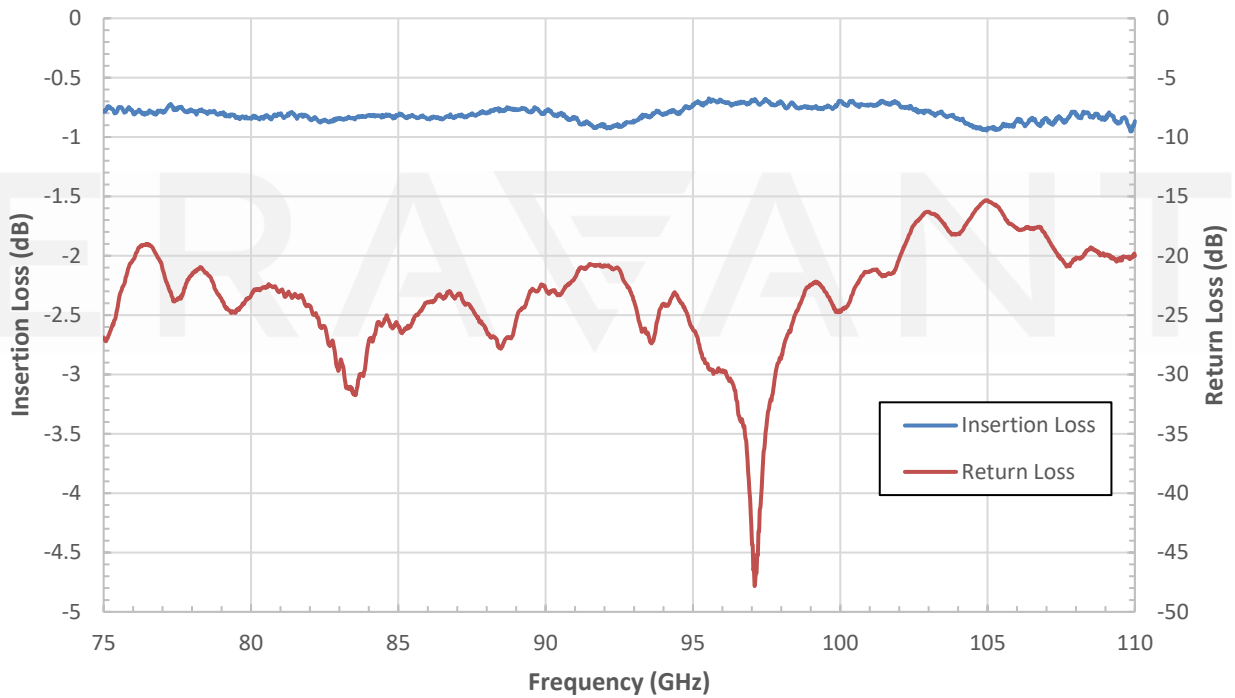
Mechanical Specifications:

Item	Parameter
Waveguide Port	WR-10 with UG-387/U-M Anti-Cocking Flange
Coaxial Port	1.0 mm Female for Model Number: SWC-101F-R1
	1.0 mm Male for Model Number: SWC-101M-R1
Material	Aluminum
Finish	Gold Plated
Weight	0.4 Oz
Outline	WC-WR-A

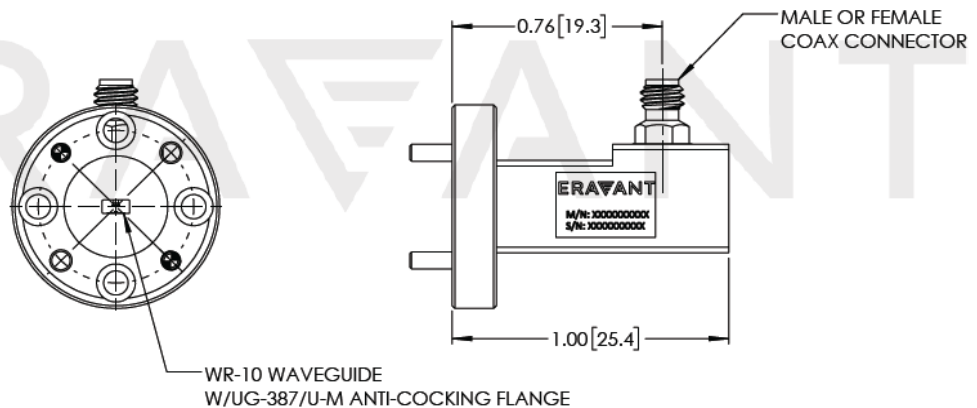
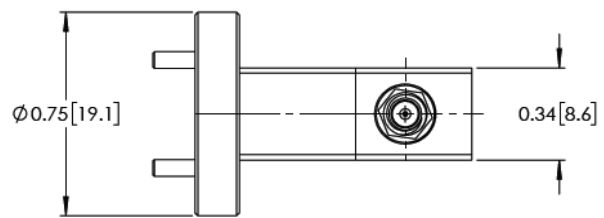


W-Band Waveguide to 1.0 mm Connector Adapter, Right Angle

Typical Measured Performance vs Frequency



Mechanical Outline: (Unless otherwise specified, all dimensions are in inches [millimeters])



www.eravant.com | 501 Amapola Ave, Torrance, CA 90501
 Phone: 424-757-0168 | Fax: 424-757-0188 | Email: support@eravant.com

W-Band Waveguide to 1.0 mm Connector Adapter, Right Angle

Note:

- All data presented is collected from a sample lot. Actual data may vary unit to unit, slightly.
- All testing was performed under +25 °C case temperature.
- Eravant reserves the right to change the information presented without notice.

Caution:

- Any foreign objects in the waveguide will cause performance degradation and may damage the adapter.
- Proper torque, 4.0 ± 0.15 inch-pounds (0.45 ± 0.02 Nm), should be used. **Eravant torque wrench, model SCH-06004-S1, is highly recommended.**

ERAVANT

