

STY-POS-EZM-500-N1

Elevation Over Azimuth Positioner, 500 mm Inner Yoke, High Capacity

STY-POS-EZM-500-N1 is a 2-axis, high capacity, elevation over azimuth positioner designed for use in antenna measurement systems. The positioner features two stepper motors with optical rotary encoders which are coupled to durable, high precision worm drives. A feedthru port in the center of the elevation axis allows for continuous rotation along the elevation axis without cable wrap issues. On the elevation arms, removable counterweights at the ends allow for balancing of heavier antennas, and a manually adjustable slide allows for offset positioning of the antenna.

The positioner comes with an external controller and GUI enabled software that can be installed on any computer for easy control of the positioner via RS-232 port. The software also has built-in functionality to allow for 2D/3D antenna pattern measurements on popular VNA systems from Keysight, Rohde and Schwarz, Anritsu, and Copper Mountain Technologies.

Positioner Specifications:

Parameter	Specification
Resolution	0.02°
Accuracy	±0.02°
Max Speed	20°/sec
Travel Range	Azimuth: ± 90° Elevation: ± 180°
Max Payload Weight	20 lbs. (9.1 kg)
Material	Aluminum
Finish	Black Anodized
Gimbal Weight	90 lbs. (40.8 kg)
Outline	TY-POS-EZM-GM202SR2-S1
Comm Port	RS-232



ECCN

EAR99

FEATURES

- High Capacity
- Stepper Motor Drive with Encoder Feedback
- External Controller
- Control Software with GUI

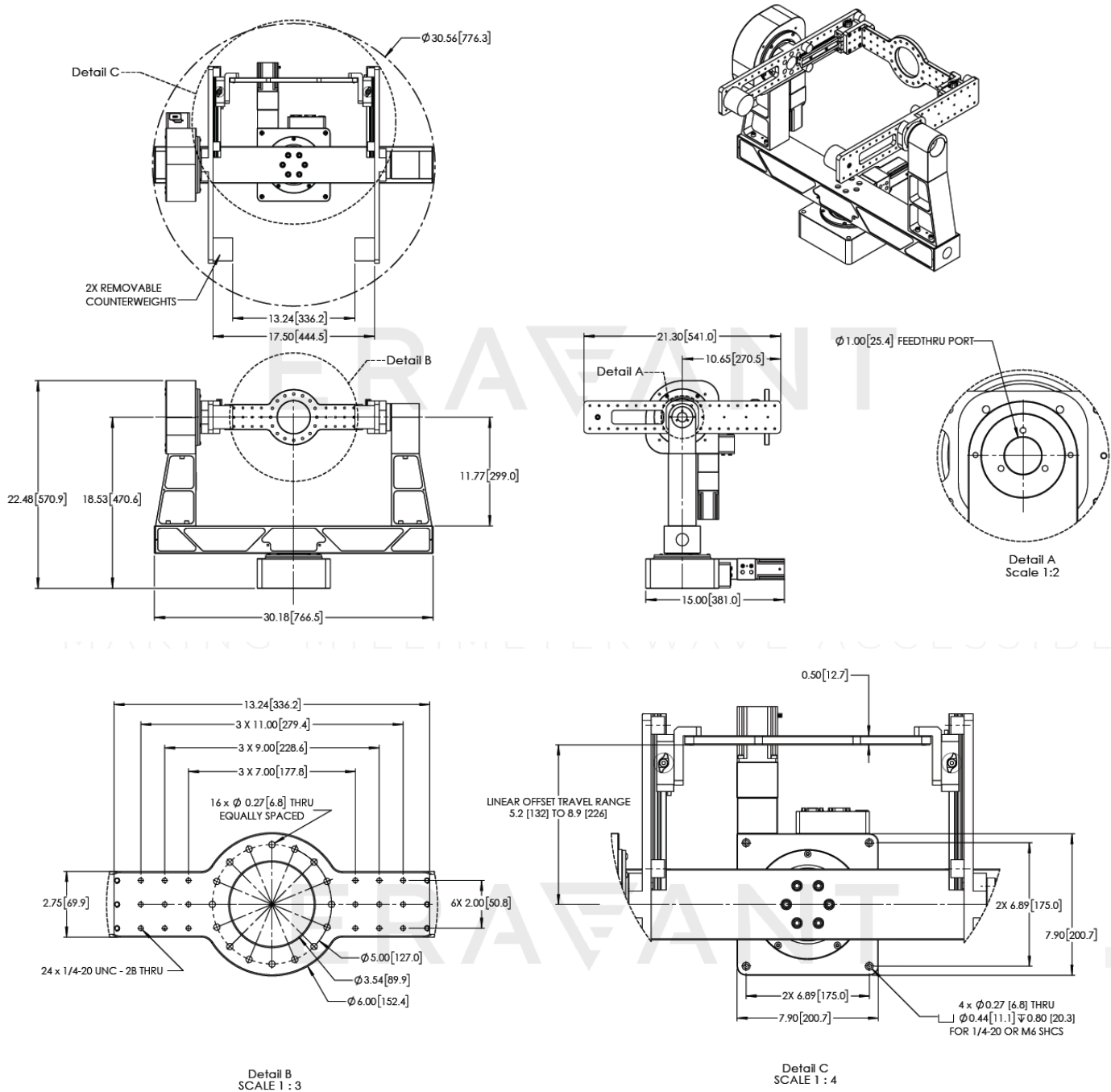
APPLICATIONS

- Antenna Testing
- General Purpose Positioning



STY-POS-EZM-500-N1

Mechanical Outline: (Unless otherwise specified, all dimensions are in inches [millimeters])



NOTE:

- Eravant reserves the right to change the information presented without notice.