

## STR-353-28-L1

### Radar Target Simulator, Level Setting

**STR-353-28-L1** is a radar doppler simulator that operates from 26.5 to 40 GHz with a WR-28 waveguide input/output. The simulator utilizes a single-sideband-modulator to modulate the incoming signal transmitted by the radar under test and sends back either a higher or lower band signal through a diplexer. The frequency-shifted signal is transmitted back to the radar under test as a Doppler signal. Target characteristics can be adjusted by changing the I and Q channel frequency and phase. **Siglent's SDG1032X Waveform Generator** or equivalent is recommended. The routing attenuation is adjusted by the level setting attenuator which can be calibrated to simulate the radar cross section (RCS).



#### Electrical Specifications:

Parameter	Minimum	Typical	Maximum
Operating Frequency	26.5 GHz		40 GHz
Carrier Rejection		25 dB	
Image Rejection		20 dB	
Routing Loss Range		14 to 70 dB	
I/Q Frequency Range	DC		13.5 GHz
I/Q Voltage			±10 V <sub>P-P</sub>
I/Q Current		±2.5 mA	±5 mA
I/Q Phase Error		±5°	
Specification Temperature		+25 °C	
Operating Temperature	0 °C		+50 °C

#### Mechanical Specifications:

Item	Specification
RF Ports	WR-28 Waveguide with UG-599/U Flange
I/Q Ports	SMA (F)
Case Finish	Black Anodized
Size	4.89" (W) x 8.09" (L) x 1.90" (H)
Outline	TR-AL-2

#### ECCN

EAR99

#### FEATURES

- Single Sideband Output
- Simulated Target Speed and Size Adjustable
- Simulated Target Moving Direction Switchable
- Instrumentation Grade

#### APPLICATIONS

- Doppler Target Simulations
- Radar Systems Testing

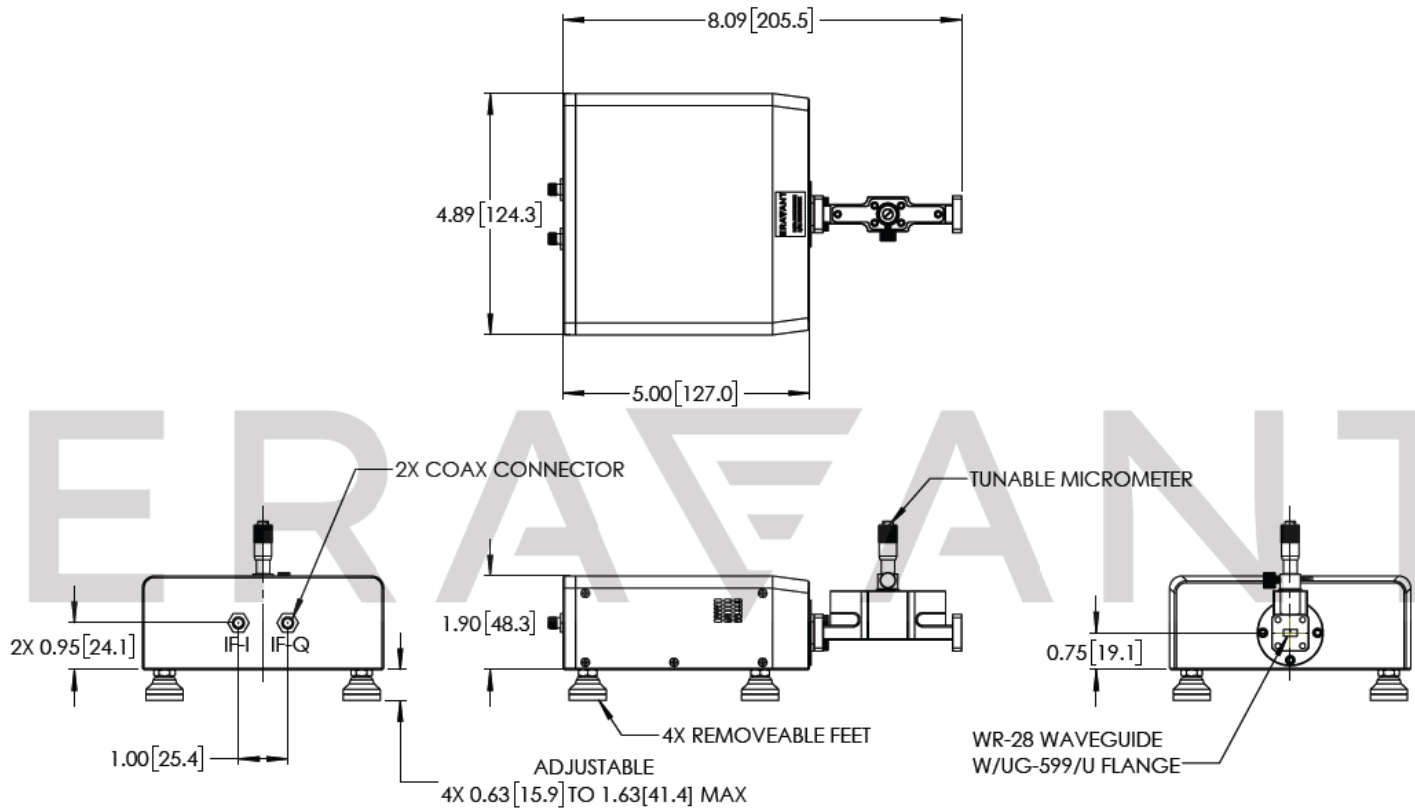
#### SUPPLEMENTAL DETAILS



## STR-353-28-L1

### Mechanical Outline:

Unless otherwise specified, all dimensions are in inches [millimeters]



### NOTE:

- Eravant reserves the right to change the information presented without notice.
- Models with different operation frequencies are available under different model numbers.
- A Radar Target Simulator with a direct reading attenuator, instead of a level setting attenuator, is available as model **STR-353-28-D1**.
- Eravant has performed test and recommends **Siglent's SDG1032X Waveform Generator** or equivalent in combination with our Radar Target Simulators.

### CAUTION:

- Exceeding absolute maximum ratings of the device will damage the device.
- Proper torque,  $8.0 \pm 0.15$  inch-pounds ( $0.92 \pm 0.02$  Nm), should be applied. Eravant torque wrench, model **SCH-08008-S1**, is highly recommended.
- Any foreign objects in the waveguide will cause performance degradation and may damage the device.