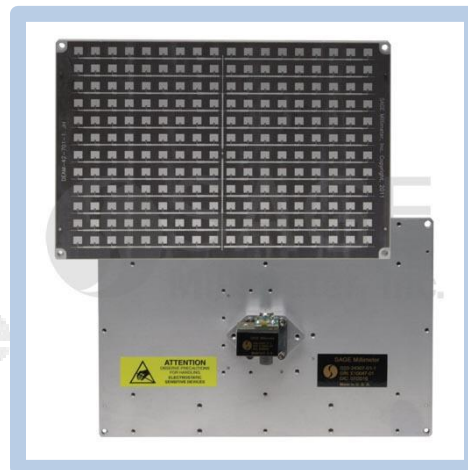




24.125 GHz Doppler Sensor Head, Single Channel

Description:

Model SSS-24307-27M-SW is a K Band, microstrip antenna-based Doppler sensor head that is designed and manufactured for **short range** measurements of a moving target's speed. The sensor head has a center frequency of 24.125 GHz and takes a nominal bias of +5.0 VDC/250 mA. The sensor heads are configured with a microstrip antenna, T/R diplexer, a single channel receiver and a transmitter/receiver oscillator in an integrated die-cast housing. Sensor heads with a dual receiver are offered under model number **SSS-24307-27M-DW** and can detect both the speed and direction of a moving target.



Features:

- 24.125 GHz Operation
- Low Flicker Noise and High Sensitivity
- Low Harmonic Emission

Applications:

- Traffic Management Systems
- Law Enforcement
- Military Surveillance Systems

Electrical Specifications:

Parameter	Minimum	Typical	Maximum
Antenna 3 dB Beamwidth		4.6° (H) x 6.8° (V)	
Antenna Side Lobes		-20 dBc	
Antenna Gain		27 dBi	
Antenna Polarization		Linear	
RF Frequency Range	24.050 GHz	24.125 GHz	24.200 GHz
Transmitting Power		+7 dBm	
IF Frequency Range	DC		100 MHz
IF Offset Voltage		-0.5 V _{DC}	
Frequency Stability		-0.8 MHz/°C	
Power Stability		-0.03 dB/°C	
DC Supply Voltage		+5 V _{DC} /250 mA	+5.5 V _{DC}
Specification Temperature		+25°C	
Operating Temperature	-40°C		+85°C



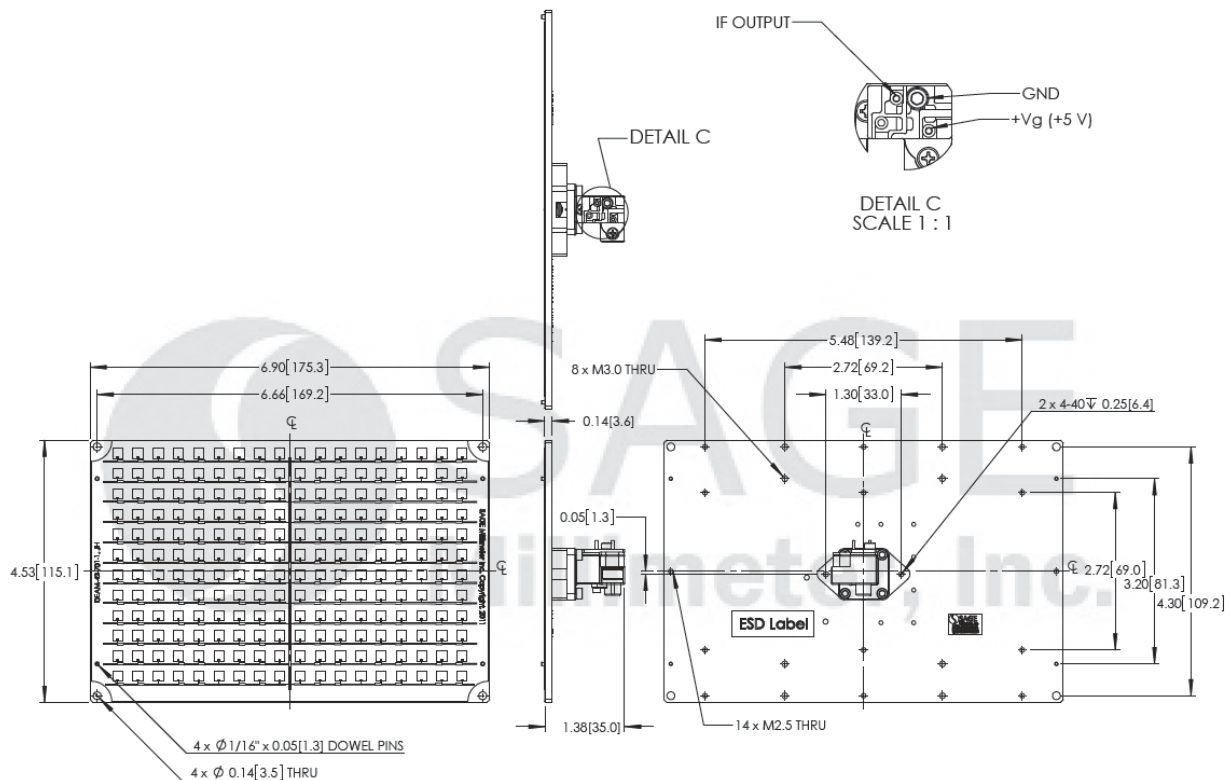


24.125 GHz Doppler Sensor Head, Single Channel

Mechanical Specifications:

Item	Specifications
Bias and IF Ports	Solder Pads
Outline	SS-MK-27W
Material	Die Casted Zinc (Housing), Aluminum Plate (Antenna)
Size	6.90" (W) X 4.53" (L) X 1.38" (H)
Weight	5.5 Oz
Finish	Chem Film (Housing), Clear Chem Film (Antenna)

Mechanical Outline: (Unless otherwise specified, all dimensions are in inches [mm])



Note:

- SAGE Millimeter, Inc. reserves the right to change the information presented without notice.

Caution:

- The device is static sensitive. Always follow ESD rules when working with the device.
- Wrong bias or reverse bias on the sensor will damage the device.
- Exceeding absolute maximum ratings shown will damage the device. Use additional heatsink or fan if necessary.



www.sagemillimeter.com | 3043 Kashiwa Street, Torrance, CA 90505
 Phone: 424-757-0168 | Fax: 424-757-0188 | Email: sales@sagemillimeter.com