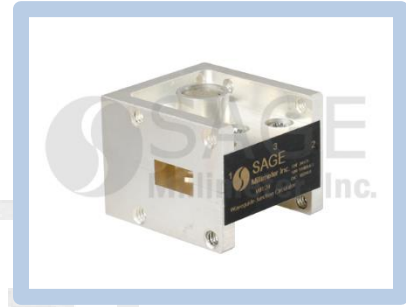




Full WR-34 Waveguide Junction Circulator, High Power Handling

Description:

Model SNF-34-C5 is a WR-34 band, waveguide junction circulator that covers the frequency range of 22 to 33 GHz. The full band circulator is designed and manufactured to provide a low insertion loss of 0.5 dB with good flatness. The circulator also offers a moderate isolation of 18 dB for system integration. The input and output ports are WR-34 waveguides with UG-1530/U flanges.



Features:

- Full Waveguide Band Operation
- Low Insertion Loss
- Moderate Isolation

Applications:

- Port Isolation
- Instrumentation
- Module Integration

Electrical Specifications:

Parameter	Minimum	Typical	Maximum
Frequency	22 GHz		33 GHz
Insertion Loss		0.5 dB	
Isolation		18 dB	
Return Loss		18 dB	
Power Handling			25 W (CW)
Specification Temperature		+25 °C	
Operating Temperature	-25 °C		+70 °C

Mechanical Specifications:

Item	Specification
RF Ports	WR-34 Waveguide with UG-1530/U Flange
Body Material	Aluminum
Finish	Chem Film
Weight	1.0 Oz
Size	1.06" (W) x 0.98" (L) X 0.83" (H)
Outline	NF-C3-DB2

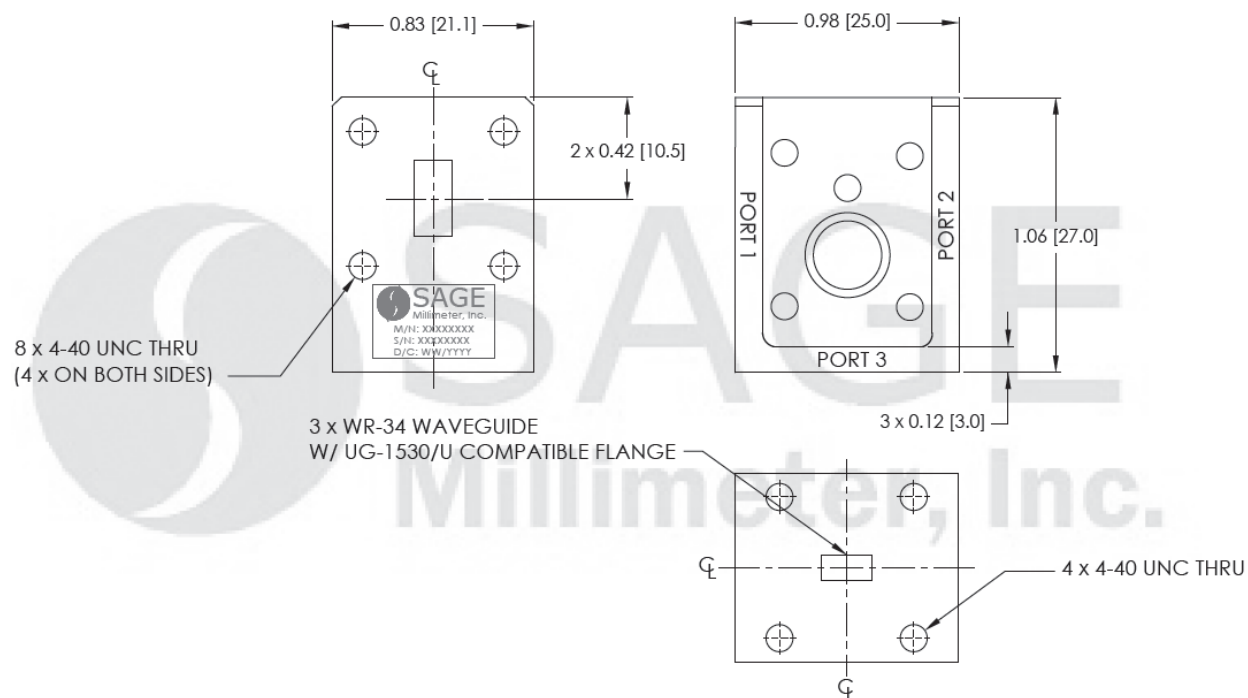
Note: The insertion loss, isolation and return loss between other ports, such as port 2 to port 3 and port 3 to port 1, are similar to the above.





Full WR-34 Waveguide Junction Circulator, High Power Handling

Mechanical Outline: (Unless otherwise specified, all dimensions are in inches [millimeters])



Note:

- SAGE Millimeter, Inc. reserves the right to change the information presented without notice.
- Other mechanical configurations are available under different model numbers.

Caution:

- Exceeding absolute maximum ratings of the device will damage the device.
- The device is magnetic field sensitive. Always keep magnetic fields a minimum of 6 inches away.
- Any foreign objects in the waveguide will destroy the device.

