

SKL-0004031633-KFKF-S1-M

Electrical Limiter, DC to 40 GHz, +16 dBm Leakage

SKL-0004031633-KFKF-S1-M is a broadband RF power limiter that utilizes a high-performance GaAs Schottky diode MMIC chip that can limit an input power up to +33 dBm with a leakage of +16 dBm. The limiter's function is to prevent damage to sensitive components, such as mixers, low noise amplifiers, switches, etc. from excessive input power. The input and output ports are 2.92 mm connectors. Other RF connector types are offered under different model numbers.



Electrical Specifications:

Parameter	Minimum	Typical	Maximum
Frequency	DC		40 GHz
Insertion Loss		2 dB	
Return Loss		10 dB	
Leakage			+16 dBm
P _{in}			+33 dBm
Specification Temperature		+25 °C	
Operating Temperature	-40 °C		+85 °C

Mechanical Specifications:

Item	Specification
Input Connector	2.92 mm (F)
Output Connector	2.92 mm (F)
Case Material	Aluminum
Finish	Gold Plated Body, Black Anodized Cover
Weight	0.6 Oz
Outline	UH-120-2C

ECCN

EAR99

FEATURES

- Broadband Coverage
- Low Insertion Loss
- High Input Power Handling
- Flat Leakage

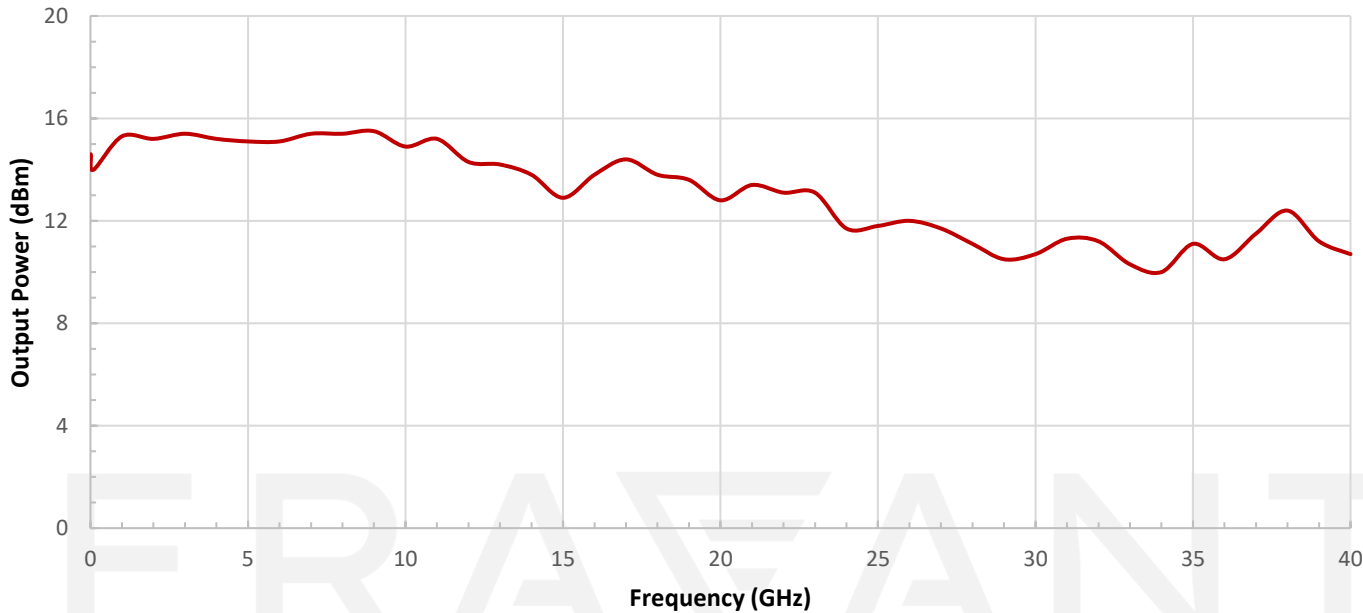
APPLICATIONS

- Power Sensitive Equipment/Component Protection

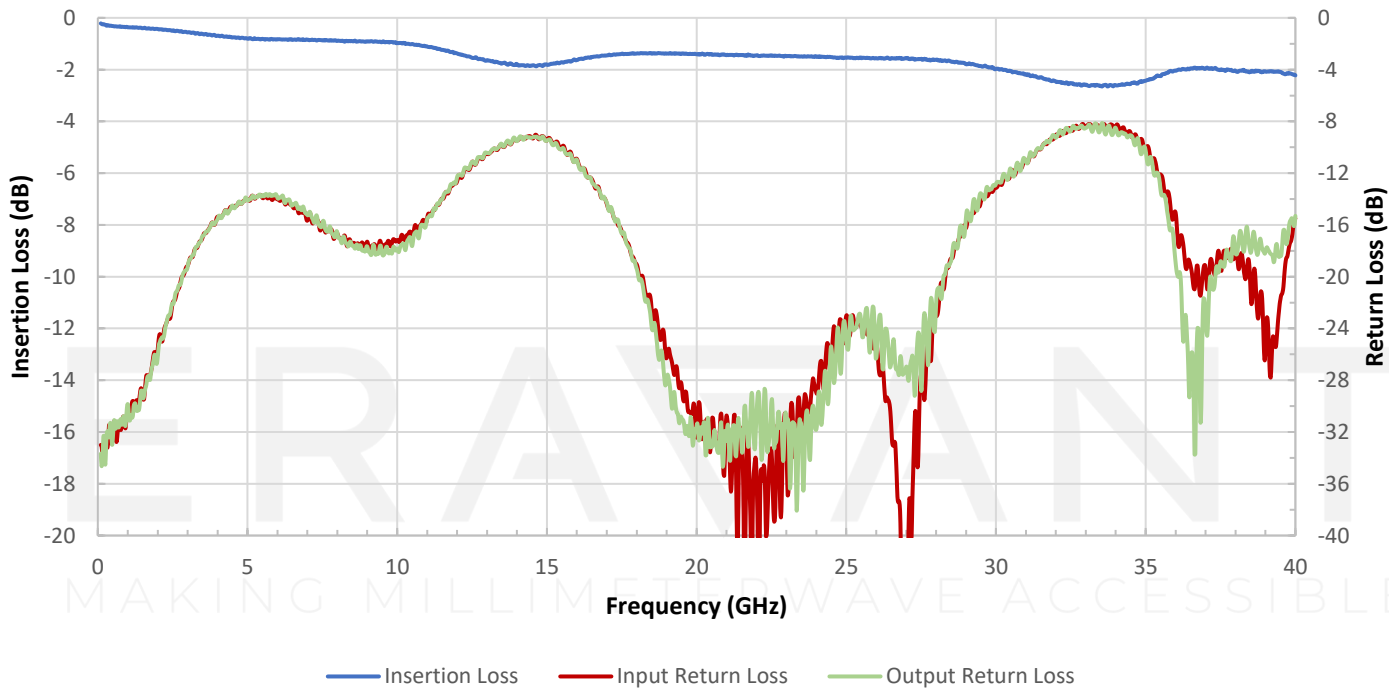


Typical Output Power vs. Frequency

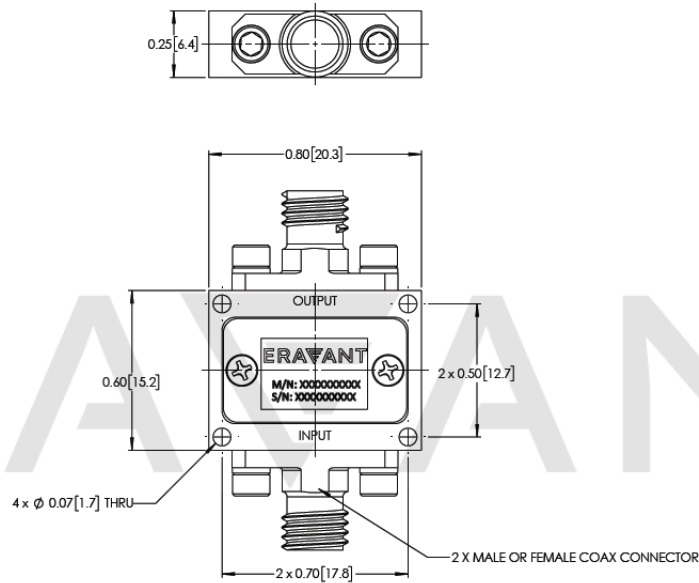
Input Power: +20 dBm



Typical Performance vs. Frequency



Mechanical Outline: (Unless otherwise specified, all dimensions are in inches [millimeters])



NOTE:

- On condition that test data is provided it is collected from a sample lot. Actual data may vary slightly from unit to unit. All testing is performed under +25 °C room temperature.
- Other input/output connector type combinations are available under different model numbers.
- Eravant reserves the right to change the information presented without notice.

CAUTION:

- Exceeding absolute maximum ratings will damage the device.
- For 1.35 mm, 1.85 mm, 2.4 mm, 2.92 mm, and SMA connectors proper torque should be applied: 8.0 ± 0.15 inch-pounds (0.90 ± 0.02 Nm). Torque wrench model [SCH-08008-S1](#) is highly recommended.