

Broadband Slope Equalizer, 20 to 44 GHz

SKE-2034430930-KFKM-S1 is a broadband slope equalizer that covers a frequency range from 20 to 44 GHz. The equalizer has a positive slope of 6.5 dB typical. The input and output ports are 2.92 mm connectors. Other RF connector types are offered under different model numbers.

**Electrical Specifications:**

Parameter	Minimum	Typical	Maximum
Frequency	20 GHz		44 GHz
Insertion Loss @ 20 GHz		11 dB	
Insertion Loss @ 32 GHz		5.5 dB	
Insertion Loss @ 44 GHz		4.5 dB	
Return Loss		8 dB	
P _{in}			+30 dBm
Impedance		50 Ω	
Specification Temperature		+25 °C	
Operating Temperature	-40 °C		+85 °C

Mechanical Specifications:

Item	Specification
Input Connector	2.92 mm (F)
Output Connector	2.92 mm (M)
Case Material	Aluminum
Finish	Gold Plated Body, Black Anodized Cover
Weight	0.6 Oz
Outline	UH-120-2C

ECCN

EAR99

FEATURES

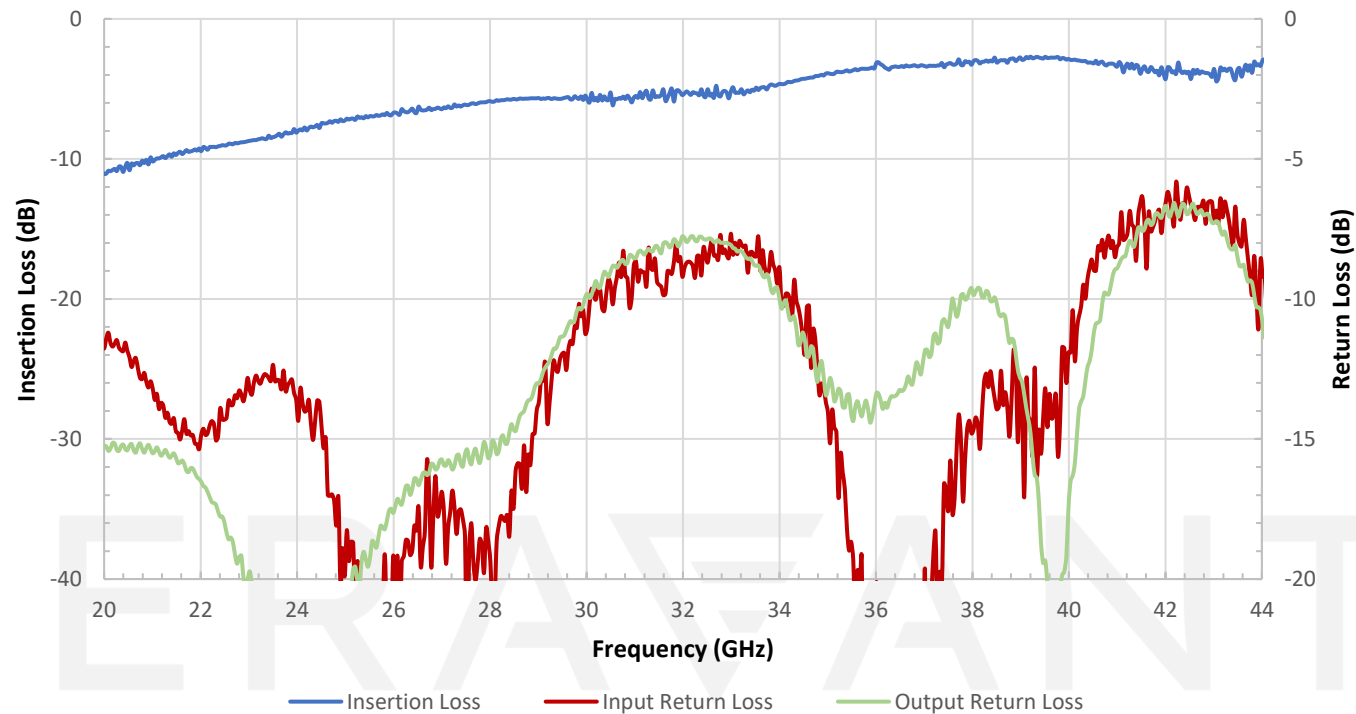
- Small Form Factor
- Low Insertion Loss
- Positive Slope

APPLICATIONS

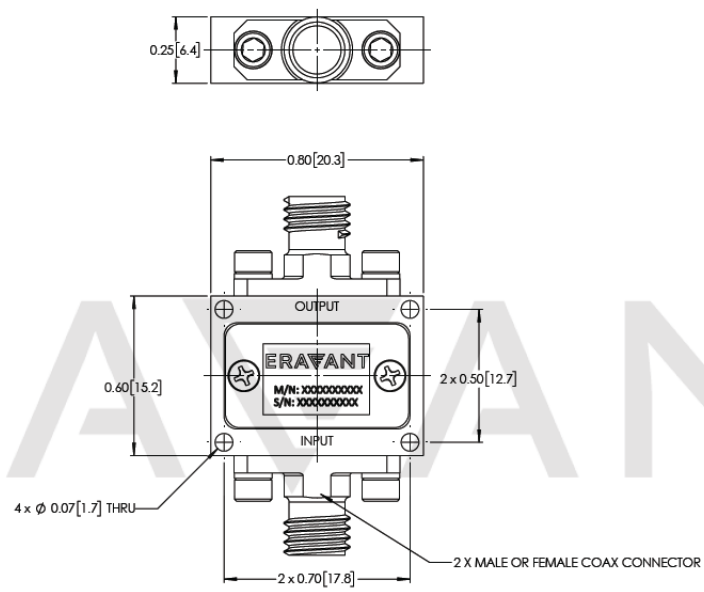
- Cable Loss Compensation
- Amplifier Compensation



Typical Performance vs. Frequency



Mechanical Outline: (Unless otherwise specified, all dimensions are in inches [millimeters])



NOTE:

- On condition that test data is provided it is collected from a sample lot. Actual data may vary slightly from unit to unit. All testing is performed under +25 °C room temperature.
- Other input/output connector type combinations are available under different model numbers.
- Eravant reserves the right to change the information presented without notice.

CAUTION:

- Exceeding absolute maximum ratings will damage the device.
- For 1.35 mm, 1.85 mm, 2.4 mm, 2.92 mm, and SMA connectors proper torque should be applied: 8.0 ± 0.15 inch-pounds (0.90 ± 0.02 Nm). Torque wrench model SCH-08008-S1 is highly recommended.

ERAVANT
MAKING MILLIMETERWAVE ACCESSIBLE

ERAVANT
MAKING MILLIMETERWAVE ACCESSIBLE