

**Broadband Slope Equalizer, 15 to 45 GHz**

**SKE-1534530430-KFKM-S1** is a broadband slope equalizer that covers a frequency range from 15 to 45 GHz. The equalizer has a positive slope of 2 dB typical. The input and output ports are 2.92 mm connectors. Other RF connector types are offered under different model numbers.

**Electrical Specifications:**

Parameter	Minimum	Typical	Maximum
Frequency	15 GHz		45 GHz
Insertion Loss @ 15 GHz		6 dB	
Insertion Loss @ 30 GHz		4 dB	
Insertion Loss @ 45 GHz		4 dB	
Return Loss		10 dB	
P <sub>in</sub>			+30 dBm
Impedance		50 $\Omega$	
Specification Temperature		+25 °C	
Operating Temperature	-40 °C		+85 °C

**Mechanical Specifications:**

Item	Specification
Input Connector	2.92 mm (F)
Output Connector	2.92 mm (M)
Case Material	Aluminum
Finish	Gold Plated Body, Black Anodized Cover
Weight	0.6 Oz
Outline	UH-120-2C

**ECCN**

EAR99

**FEATURES**

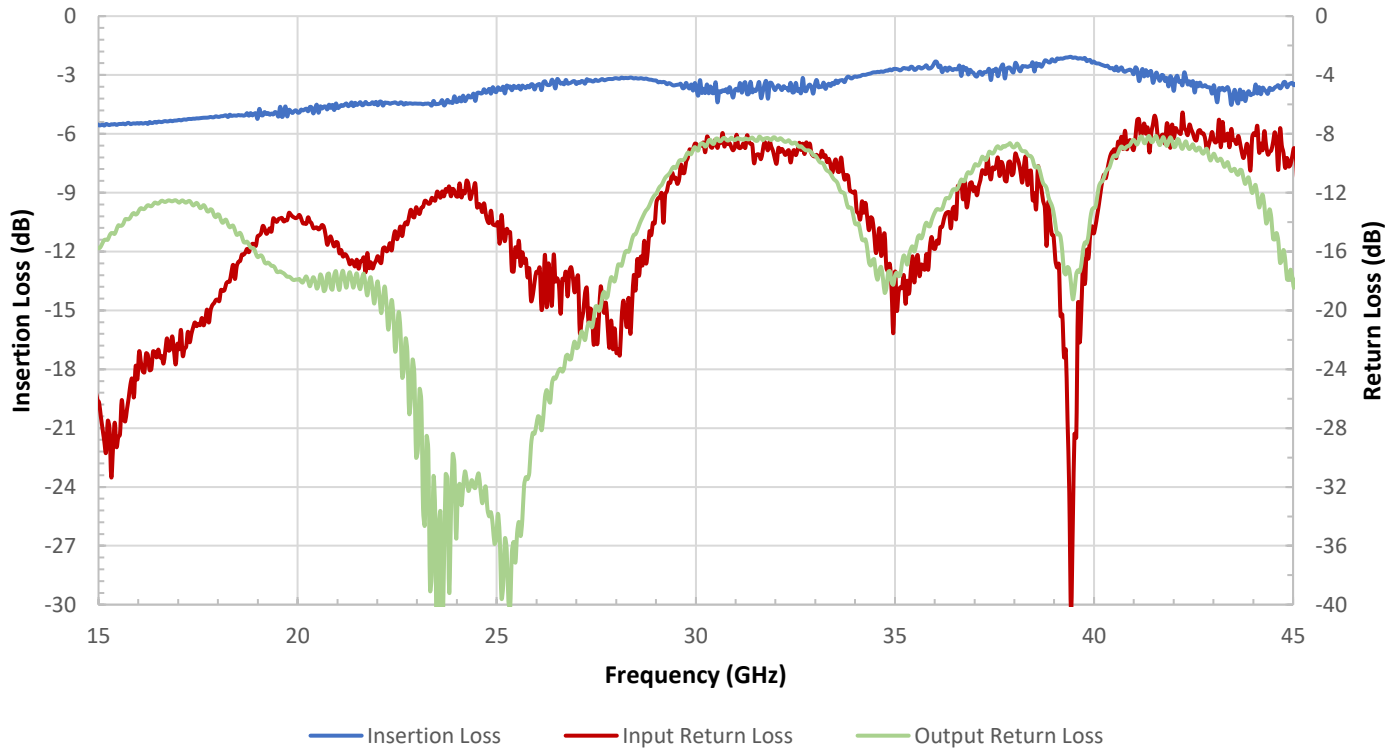
- Small Form Factor
- Low Insertion Loss
- Positive Slope

**APPLICATIONS**

- Cable Loss Compensation
- Amplifier Compensation

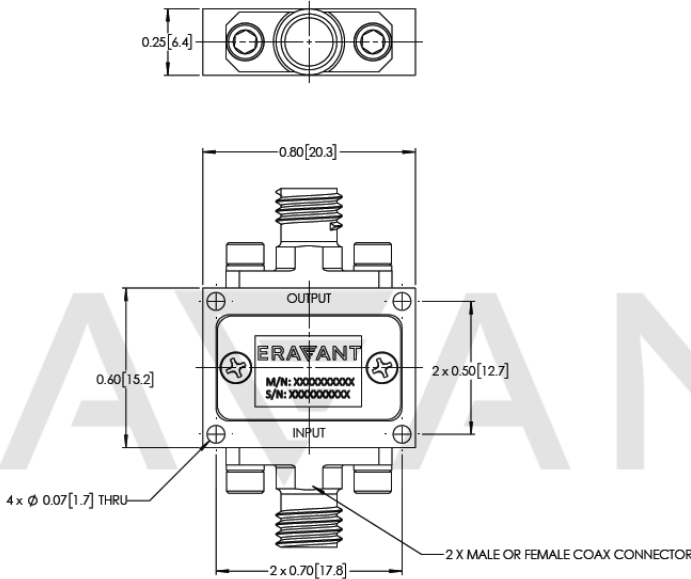


Typical Performance vs. Frequency



MAKING MILLIMETERWAVE ACCESSIBLE

**Mechanical Outline:** (Unless otherwise specified, all dimensions are in inches [millimeters])



**NOTE:**

- On condition that test data is provided it is collected from a sample lot. Actual data may vary slightly from unit to unit. All testing is performed under +25 °C room temperature.
- Other input/output connector type combinations are available under different model numbers.
- Eravant reserves the right to change the information presented without notice.

**CAUTION:**

- Exceeding absolute maximum ratings will damage the device.
- For 1.35 mm, 1.85 mm, 2.4 mm, 2.92 mm, and SMA connectors proper torque should be applied:  $8.0 \pm 0.15$  inch-pounds ( $0.90 \pm 0.02$  Nm). Torque wrench model SCH-08008-S1 is highly recommended.

ERAVANT  
MAKING MILLIMETERWAVE ACCESSIBLE

ERAVANT  
MAKING MILLIMETERWAVE ACCESSIBLE