

Ka-Band SPDT PIN Switch with TTL Driver, Absorptive

Description:

Model SKD-2734034560-2828-A3 is a Ka band absorptive PIN diode based, single pole, double throw (SPDT) switch with a TTL driver that operates between 26.5 and 40 GHz. This model offers a typical insertion loss of 4.5 dB and 60 dB port-to-port isolation with a typical switching speed of 100 nanoseconds. The switch uses WR-28 Uni-Guide™ waveguides with UG-599/U flange for all RF ports and solder pins for DC bias and TTL control.



Features:

- Full Band Operation
- High Isolation
- Compact Size
- Fast Control Speed

Applications:

- 5G Systems
- Radar Systems
- Communication Systems
- Automatic Test Set
- Switching Network

Electrical Specifications:

Parameter	Minimum	Typical	Maximum
Frequency	26.5 GHz		40.0 GHz
Insertion Loss		4.5 dB	
Return Loss		10 dB	
Isolation		60 dB	
Operational RF Input Power			+20 dBm
Damage RF Input Power			+27 dBm
Bias Voltage		$\pm 5 V_{DC}$	$\pm 6 V_{DC}$
Bias Current		100/50 mA	
Control		TTL	
Switching Speed		100 ns	
Specification Temperature		+25 °C	
Operation Temperature	-45 °C		+85 °C

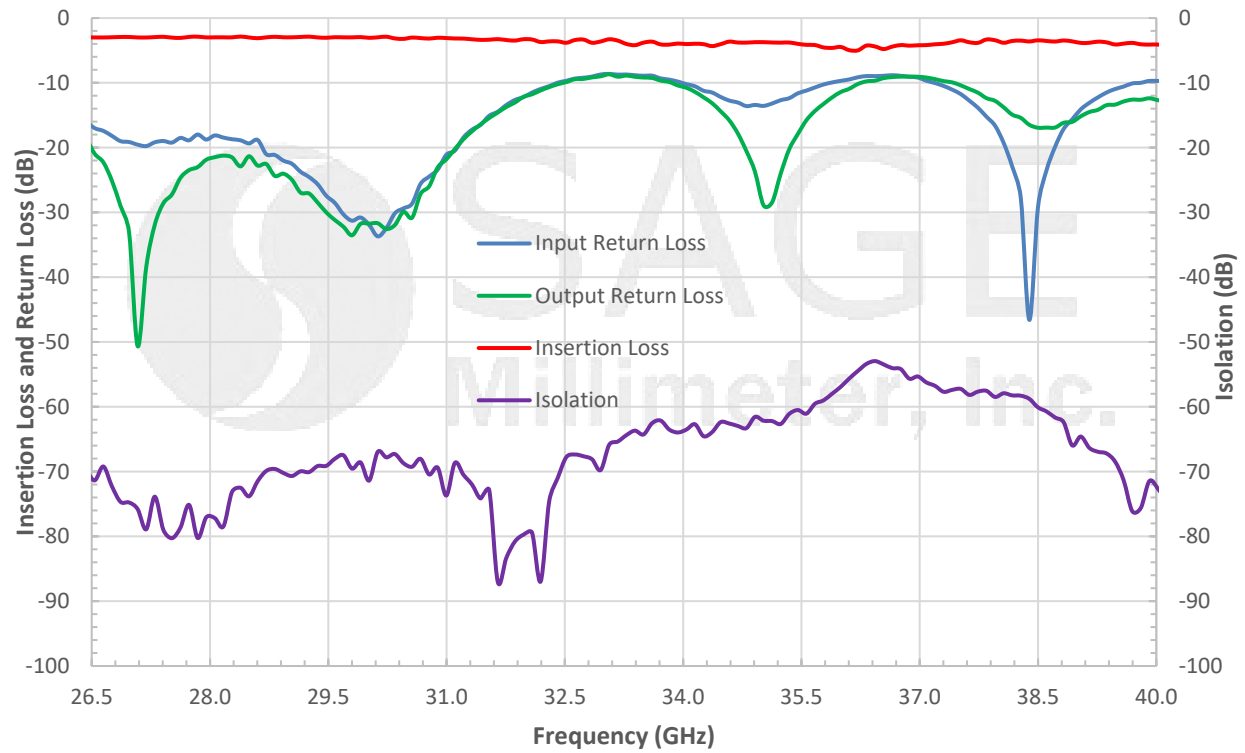
Mechanical Specifications:

Item	Specification
Input Port	WR-28 Uni-Guide™ Waveguide with UG-599/U Compatible Flange
Output Port	WR-28 Uni-Guide™ Waveguide with UG-599/U Compatible Flange
Bias	Solder Pins
Logic Input	Solder Pins
Case Material	Aluminum
Finish	Gold Plated
Weight	1.06 Oz
Size	1.18" (L) X 1.00" (W) X 0.40" (H)
Outline	KD-AA-Z1



Ka-Band SPDT PIN Switch with TTL Driver, Absorptive

Typical Performance vs. Frequency

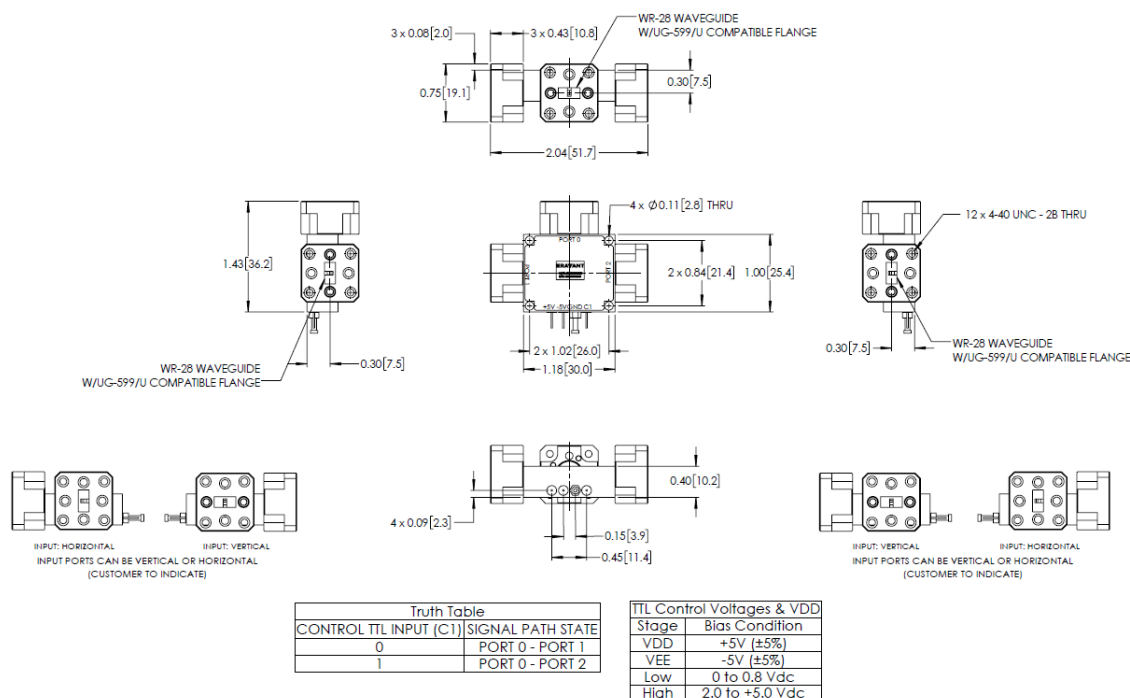


Note: The insertion loss, isolation and return loss between other ports are similar to the above plots.



Ka-Band SPDT PIN Switch with TTL Driver, Absorptive

Mechanical Outline: (Unless otherwise specified, all dimensions are in inches [millimeters])



Note:

- All data presented is collected from a sample lot. Actual data may vary unit to unit slightly.
- All testing was performed under +25 °C case temperature.
- The switch employs Eravant's trademarked and patent pending technology, the **Uni-Guide™**, as its waveguide interfaces. The orientation of the input and the output waveguides can be specified through corresponding model numbers. For example, the model number for a vertical input waveguide and horizontal output waveguide configuration would be **SKD-2734034560-2828H-A3** instead of the default **SKD-2734034560-2828-A3** which indicates vertical orientation for both input and output.
- Other mechanical configurations are available under different model numbers.
- Eravant reserves the right to change the information presented without notice.

Caution:

- Exceeding absolute maximum ratings shown will damage the device.
- The switch is a static sensitive device. Always follow ESD rules when working with the switch.
- Proper torque, 8.0 ± 0.15 inch-pounds (0.92 ± 0.05 Nm), should be applied. **Eravant's torque wrench, model SCH-08008-S1, is highly recommended.**