

X2 Active Frequency Multiplier, Ka Band, 22 to 44 GHz, +13 dBm P_{out}

Description:

Model SFA-223443213-28SF-E1 is an active X2 frequency multiplier. The multiplier has an input frequency of 11 to 22 GHz with a typical input power of +13 dBm and an output frequency of 22 to 44 GHz with a typical output power of +5 dBm. The multiplier also has a typical harmonic suppression of -15 dBc. The DC power requirement for the multiplier is +8 V_{DC}/250 mA. The input port of this model is a female SMA connector and the output port is a WR-28 Uni-Guide™ waveguide with a UG-599/U flange. It is an in-line angle configuration. Other port configurations, such as right angle, are also available under different model numbers.



Features:

- Wide Band Coverage
- High Output Power
- Low Harmonic Components

Applications:

- 5G Systems
- Frequency Extenders
- Source Modules
- Communication Systems

Electrical Specifications:

Parameter	Minimum	Typical	Maximum
Input Frequency	11 GHz		22 GHz
Input Power	+1 dBm	+5 dBm	+10 dBm
Output Frequency	22 GHz		44 GHz
Output Power		+13 dBm	
Harmonic Suppression		-15 dBc	
Spurious		-60 dBc	
Port Return Loss		10 dB	
DC Voltage	+6 V _{DC}	+8 V _{DC}	+12 V _{DC}
DC Supply Current		250 mA	
Specification Temperature		+25 °C	
Operating Temperature	0 °C		+50 °C

Mechanical Specifications:

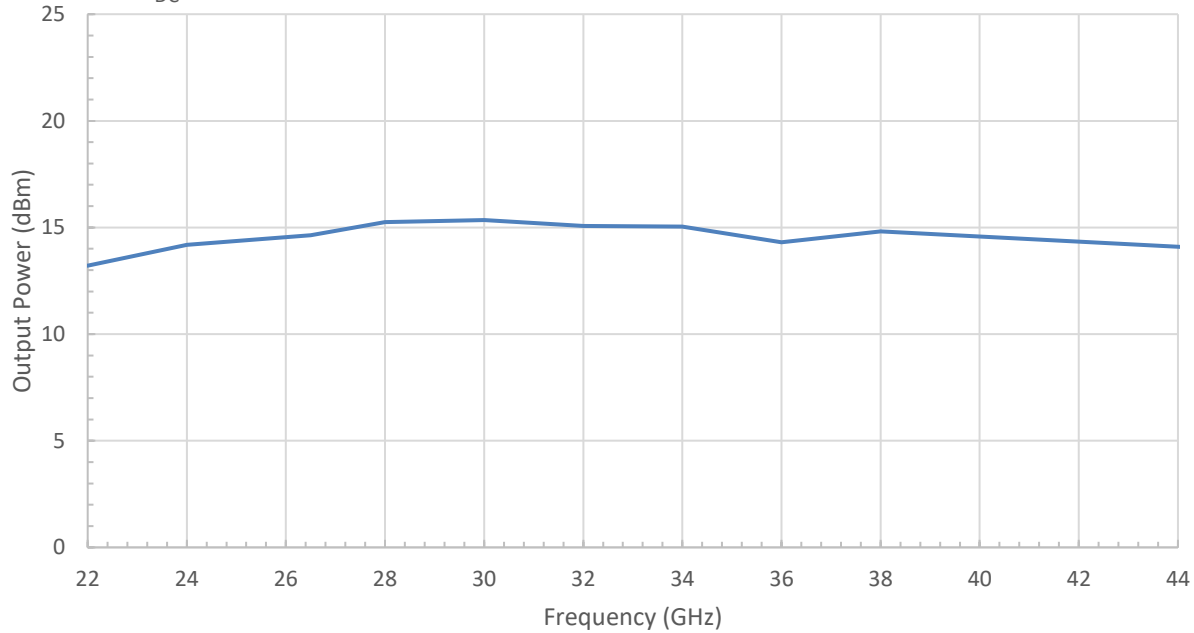
Item	Specification
Input	SMA (F)
Output	WR-28 Uni-Guide™ Waveguide with UG-599/U Flange
Bias	Solder Pin
Case Material	Aluminum
Finish	Gold Plated
Weight	1.5 Oz
Size	1.63" (L) X 1.20" (W) X 0.75" (H)
Outline	FA-SA-2CW



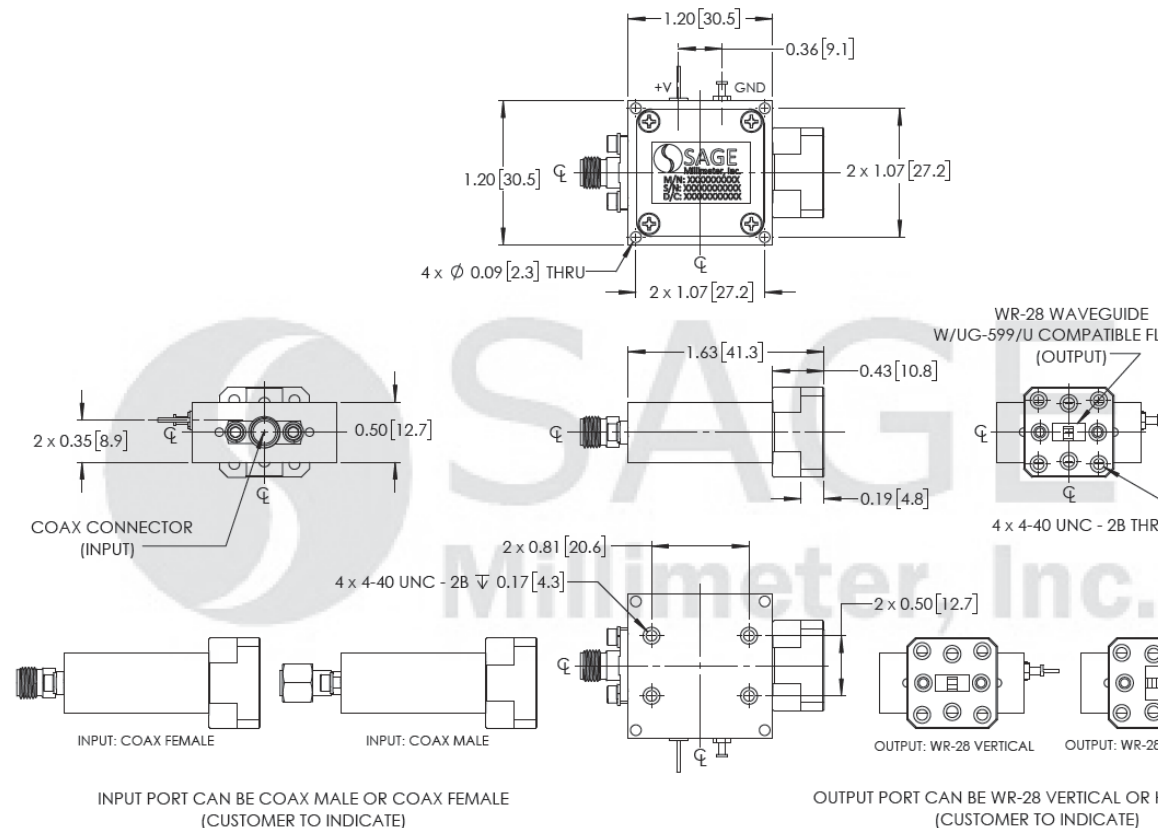
X2 Active Frequency Multiplier, Ka Band, 22 to 44 GHz, +13 dBm P_{out}

Typical Output P_{out} vs. Frequency

Bias = +8 V_{DC}/250 mA



Mechanical Outline: (Unless otherwise specified, all dimensions are in inches [millimeters])





X2 Active Frequency Multiplier, Ka Band, 22 to 44 GHz, +13 dBm P_{out}

Note:

- All data presented is collected from a sample lot. Actual data may vary unit to unit, slightly.
- All testing was performed under +25 °C case temperature.
- The active multiplier employs SAGE Millimeter's trademarked and patent pending technology, **Uni-Guide™**, as its output waveguide interface. The orientation of the output waveguides can be specified through corresponding model numbers. For example, the model number for a horizontal output waveguide configuration would be **SFA-223443213-28HSF-E1** instead of the default **SFA-223443213-28SF-E1** which indicates vertical orientation output.
- SAGE Millimeter, Inc. reserves the right to change the information presented without notice.
- Other mechanical configurations are available under different model numbers.

Caution:

- Exceeding absolute maximum ratings shown will damage the device.
- The device is static sensitive. Always follow ESD rules when working with the device.
- The case temperature of the device shall never exceed +50 °C. Use proper heatsink or fan if necessary.
- Any foreign objects in the waveguide will cause performance degradation and may damage the device.
- Proper torque, 8.0 ± 0.15 inch-pounds (0.90 ± 0.02 Nm), should be applied. **SAGE Millimeter torque wrench, model SCH-08008-S1, is highly recommended.**

