

SCT-EFEF-UB-PM4

1.35 mm (F) to 1.35 mm (F) Coaxial Adapter, 4 Hole Panel Mount

SCT-EFEF-UB-PM4 is a 1.35 mm female to 1.35 mm female coaxial adapter with a 4 hole panel mount that covers the frequency range of DC to 90 GHz. This coaxial adapter offers efficient transitioning between the coaxial connectors with a high return loss and typical insertion loss of 0.7 dB. The impedance of the adapter is 50 Ohms. Other configurations are available under different model numbers.



Electrical Specifications:

Parameter	Minimum	Typical	Maximum
Frequency Range	DC		90 GHz
Insertion Loss		0.7 dB	
Return Loss		14 dB	
Impedance		50 Ω	
Specification Temperature		+25 $^{\circ}$ C	
Operating Temperature	-40 $^{\circ}$ C		+85 $^{\circ}$ C

Mechanical Specifications:

Item	Specification
Connector 1 Type	1.35 mm Female
Connector 2 Type	1.35 mm Female
Body Material	Stainless Steel
Body Finish	Passivated
Contact Material	Beryllium Copper
Insulator Material	PEI
Adaptor Body Style	4 Hole Panel Mount
Weight	0.2 Oz
Length	0.89"
Outline	CT-EFEF-PM4-LN1

ECCN

EAR99

FEATURES

- Instrumentation Grade
- High Return Loss
- Low Insertion Loss

APPLICATIONS

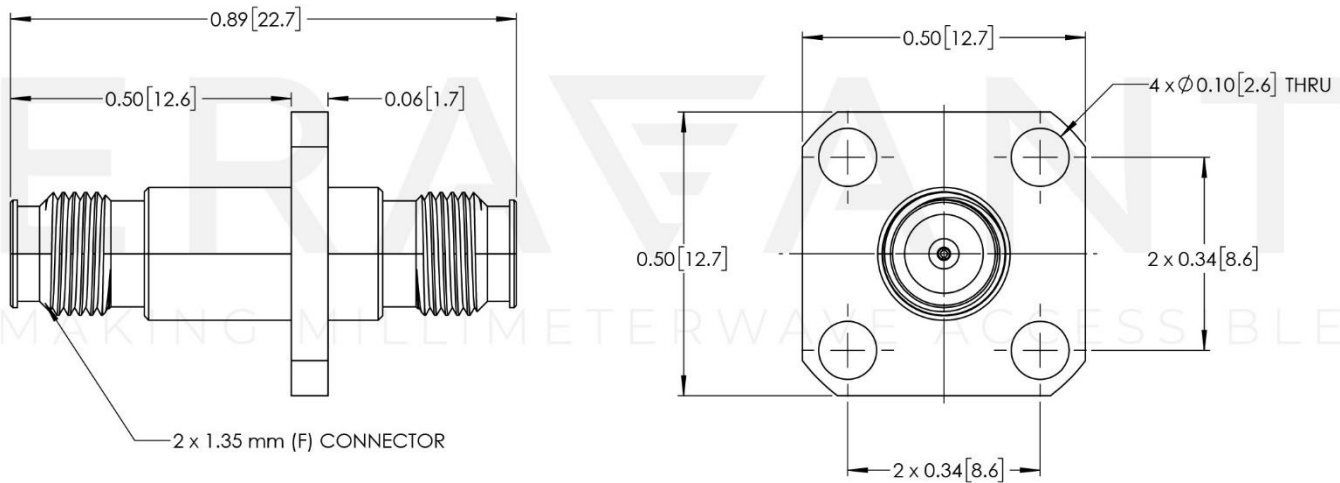
- Test Lab
- Sub-assemblies

SUPPLEMENTAL DETAILS



SCT-EFEF-UB-PM4

Mechanical Outline: (Unless otherwise specified, all dimensions are in inches [millimeters])



NOTE:

- All data presented is collected from a sample lot. Actual data may vary slightly from unit to unit.
- All testing is performed under +25 °C case temperature.
- Eravant reserves the right to change the information presented without notice.

CAUTION:

- Exceeding absolute maximum ratings shown will damage the device.
- Proper torque should be applied: 8.0 ± 0.15 inch-pounds (0.90 ± 0.02 Nm). Torque wrench model SCH-08008-S1 is highly recommended.