



## Ka-Band Lens Corrected Antenna

### Description:

**Model SAL-3333732905-28-S1** is a Ka-band lens corrected antenna that operates from 33 to 37 GHz. At a center frequency of 35 GHz, the antenna delivers 29 dBi nominal gain and 5 degrees typical half power beamwidth. The antenna employs a low loss lens to offer excellent aperture efficiency and low sidelobe levels. The lens corrected antenna is equipped with a WR-28 waveguide and UG-599/U flange as its input port. It supports linear polarized waveforms.



### Features:

- Center Fed
- Low Sidelobes
- Low Cross Polarization

### Applications:

- Radar Systems
- Communication Systems
- Sensor Systems

### Electrical Specifications:

Parameter	Minimum	Typical	Maximum
Frequency	33 GHz	35 GHz	37 GHz
Gain		29 dBi	
3 dB Beamwidth		5°	
Sidelobe Level		-18 dB	
Polarization		Linear	
Return Loss		20 dB	

### Mechanical Specifications:

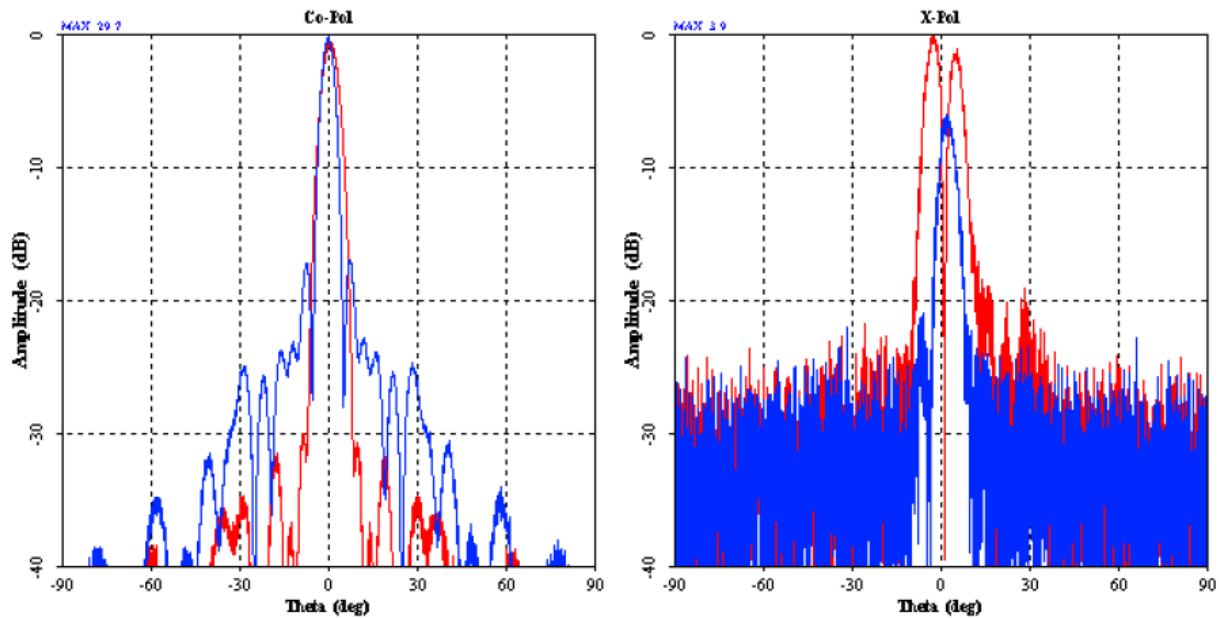
Item	Specification
Antenna Port	WR-28 Rectangular Waveguide with UG-599/U Flange
Lens Diameter	4.62"
Dimensions	4.80" (Ø) x 5.30" (L)
Material	Aluminum
Finish	Chem Film
Weight	9.0 Oz
Outline	AL-RA29



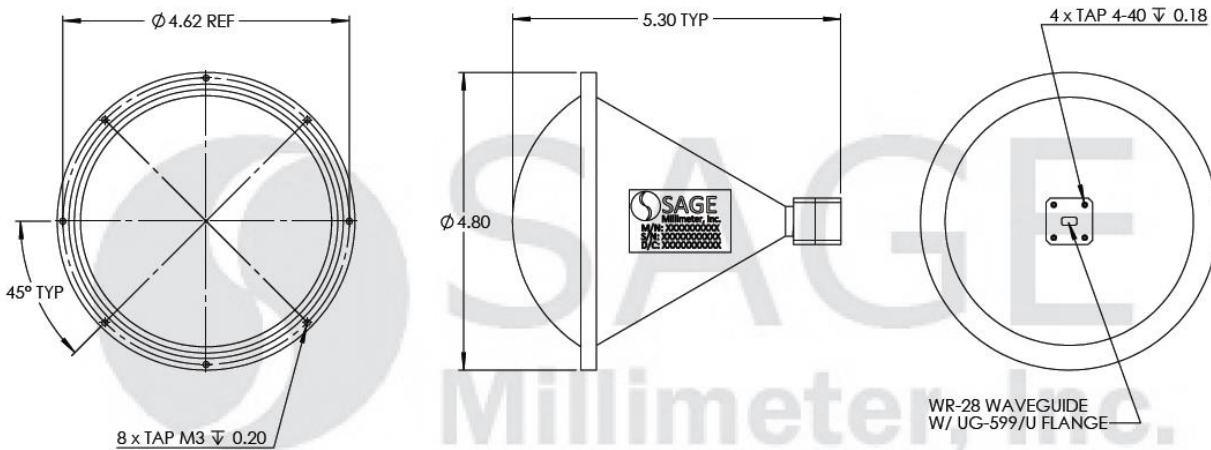


## Ka-Band Lens Corrected Antenna

### Typical Measured Far Field Patterns @ 35 GHz



**Mechanical Outline:** (Unless otherwise specified, all dimensions are in inches)



**Note:**

- All data are presented using a limited sample lot. Actual data may vary unit to unit.
- SAGE Millimeter, Inc. reserves the right to change the information presented without notice.

**Caution:**

- Foreign objects in the waveguide will affect the antenna performance and may damage the antenna.

